

LANGPORTS



BRISBANE



GOLD COAST



SYDNEY

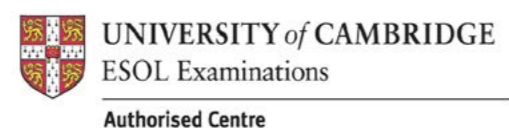
AGENT MANUAL

Live Love Learn



Since 2004, over 32 000 students from 80 nationalities have chosen to study at Langports. Thank you for your ongoing support.

Langports' CRICOS code 026 30J



www.langports.com

Key Staff

HEAD OFFICE



John France
Chairman & Founder



Anna France
CEO - alf@langports.com



Barry Clifford
Operations Manager
bc@langports.com

HEAD OFFICE - MARKETING TEAM



Claudia Salazar Fragozo
Regional Marketing Manager - LATAM
csf@langports.com



Tiffany Marcantei
Regional Marketing Manager - Europe
tiffany.marcantei@langports.com



Shun Hayashi
Regional Marketing Manager - Asia
shun.hayashi@langports.com

OFFSHORE REPRESENTATIVE



Anderson Bertin Da Silva
Offshore Marketing Representative (Brazil)
brazil@langports.com

LANGPORTS BRISBANE



Linda Schemkes
Receptionist



Mojgan Manoochehri
Accommodation Officer - Brisbane
bne.accommodation@langports.com

LANGPORTS GOLD COAST



Chiaki Harada
Receptionist



Irina Kolbasina
Accommodation Officer - Gold Coast
gc.accommodation@langports.com

LANGPORTS SYDNEY



Daniella Verde
Receptionist



Emma Grez
Student Services & Accommodation Manager
syd.accommodation@langports.com

The Langports Foundation



In 2007, Langports created The Langports Foundation, a not-for-profit business. The Langports Foundation exists to help improve the lives of disadvantaged children through education. To date, The Langports Foundation has supported projects in Australia, Colombia, Vietnam and Cambodia.

While at Langports, students occasionally have the opportunity to volunteer for the Foundation and raise money through various activities.

Langports Sydney is a not-for-profit company and registered charity. All of its proceeds are donated to support the education of disadvantaged children.

www.thelangportsfoundation.com



Langports' Awards



The Langports Difference

'Lang' from Language and 'Port' meaning "a destination"
Langports = Language Destination

- ✿ **We provide agents with:**
 - Prompt, professional and friendly administration. Langports is a reliable and responsible partner
 - 24 hour response to all enquiries
 - Accurate and reliable information through Agent Manual, website and newsletters
 - Testimonials from students who recommend Langports to their friends and family
 - Comprehensive training sessions, online or in person whenever possible
- ✿ **Langports' core business philosophy is based on taking care of our students.**
 Student satisfaction is how we measure our success. According to our exit evaluations completed by every student this year, 97% of our students are satisfied.
- ✿ **Langports takes care of students' individual needs inside and outside the classroom.**
 - UFO English – helping students to make progress according to their individual strengths and weaknesses
 - As part of the UFO English full-time program, students have the opportunity to choose from one of the afternoon option classes to specialise (English options or professional options)
 - Other specialty courses: Cambridge FCE, CAE and CPE, Cambridge Flexi, English for Academic Purposes (EAP), TOEIC+ and IELTS
 - Workshops to give students an even greater opportunity to enhance their study with relevant, practical and interesting topics
 - Platinum Program for more mature students (40+)
 - A choice of four accommodation options; Deluxe homestay, Family homestay, Self-Cater homestay and Student Accommodation
 - A weekly activities program with Langports' staff attending
 - Academic and welfare counseling services
 - Volunteering programs to allow students to get involved with the community
 - Internship and demi-pair programs
 - Evening IELTS Flexi course in Sydney
 - Job help service (not placement, but assistance)
- ✿ **Langports stands for quality in international education. We are a serious education provider with a professional and friendly approach.**
- ✿ **Langports offers modern, clean and people-friendly facilities, with multimedia computer areas, wireless internet and large classrooms at all schools.**
- ✿ **Langports offers three popular destinations for studying in sunny Brisbane, Gold Coast and Sydney.**
- ✿ **Through our Foundation, staff, students and agents can help make a difference to the lives of disadvantaged children.**

If you do not have an agent's log-in for the agent section of the Langports website, please contact your Regional Marketing Manager

- ✿ Asia: Shun Hayashi - shun.hayashi@langports.com
- ✿ Europe: tiffany.marcantei@langports.com
- ✿ Latin America: Claudia Salazar - csf@langports.com

Langports Pty Ltd ACN110889408 trading as Langports English Language College
Brisbane and Gold Coast campuses.
CRICOS Provider Code: 02630J

The Doris Woodfine Foundation (DWF) ACN169590416 trading as
Langports Sydney managed under agreement by Langports Pty Ltd.
CRICOS Provider Code: 03570G



How to sell Langports in 5 Key points

1. UNIQUE COURSES TAUGHT BY EXPERIENCED TEACHERS



Langports offers a choice of innovative & unique courses from beginner to advanced levels, all taught by our experienced teachers. Our most popular program is UFO English, where students will get a personalised timetable designed according to their individual learning needs, and to their strengths and weaknesses. If your student have a specific goal or would like to take a recognised English exam, they can also study our Cambridge (FCE, CAE & CPE), TOEIC, IELTS or English for Academic Purposes courses. We will always have a small class size at Langports with a maximum of 16 students.

2. GREAT NATIONALITY MIX IN AN ENGLISH ONLY ENVIRONMENT



Each year students from over 50 nationalities choose to study at Langports. If students make Langports their choice, they will expand their global network and make friends from around the world, all in English only!

3. "BEST ENGLISH SCHOOL IN AUSTRALIA"



Langports focuses on quality and student satisfaction. At Langports, each student is encouraged to share their feedback about their experience at our college and we love hearing their stories. Students also rate Langports on www.educationstars.com and leave their comments on this independent website for future students to read. Langports has been awarded the 'Best English Language School in Australia' in 2011, 2012, 2013, 2014 and 2015, and 2018.

4. THREE AMAZING LOCATIONS



Langports has three schools; one in Brisbane, one in the Gold Coast and one in Sydney. They all are located in the centre of the city, with great facilities and locations that are convenient for students. Students can choose their preferred destination, or, if they are interested in travelling in Australia, they can also choose to study at two or three of our schools!

5. GREAT RANGE OF SERVICES (Activities, accommodation, work & volunteering experiences)



Langports takes care of its students' entire experience and has dedicated staff members to help them with:

- Finding an accommodation,
- Discovering the country (afternoon & weekend activities)
- Looking for jobs (volunteering, internships or demi-pair placements and help to find paid jobs).



Tools to sell Langports

Virtual Tours

360 degree tours of our Brisbane, Gold Coast & Sydney schools



Click on the pins!

Satellite Pages

- Arabic
- Cantonese
- Castellano
- Czech
- French
- German
- Italian
- Japanese
- Korean
- Mandarin
- Portuguese
- Spanish
- Thai
- Turkish

Nationality Mix

Updated every month



Brisbane
Gold Coast
Sydney

Langports App

For Students! Put Langports in your pocket! Download our App now!



Social Media

Connect with us via our social media channels. Feel free to share or repost!



Student Testimonials

On our Youtube channel, you can find student testimonials in many languages



Agent Login

If you do not have a login please contact your Regional Marketing Manager



Why Langports Campuses Courses Students Blog Contact

Advisor

An online platform that connects Langports and agents in real time with prices, quotes and applications



Table of Contents

Courses

Study Options	12
What happens on the first day at Langports	13
UFO English... only at Langports	14
UFO English Professional Option Class	16
UFO English Workshops	17
Cambridge choice	18
TOEIC Plus	20
IELTS	22
IELTS FLEXI - Evening course	24
EAP - English for Academic Purposes	26
Langports Pathways	28
Langports Platinum Program	32
Langports English Exam Centre	40
Langports Group Study Tours	41
Checklist - Enrolments	44
Policies and Procedures - Enrolments	44
Frequently Asked Questions - Courses and Exams	45
Community Engagement & Work Opportunities	
Langports Work Assist	50
English + Demi-pair Program at Langports	51
English + Internship Program at Langports	52
English + Volunteering Program at Langports	56
English + Community Volunteering	57
English + Child Care Volunteering	58
English + Eco Volunteering	59
English + Aboriginal Experience Volunteering	62
Policies and Procedures - Enrolments	63
Frequently Asked Questions - Volunteering Program	64
Frequently Asked Questions - Internship Program	64
Frequently Asked Questions - Demi-pair Program	66
Accommodation	
Accommodation - Homestay	70
Accommodation - Student Houses Brisbane	72
Accommodation - Student Houses Gold Coast	75

Accommodation - Student Houses Sydney	78
Frequently Asked Questions - Accommodation	84
Destinations	
Langports Brisbane School	88
Langports Brisbane School - Surroundings	89
Why Choose Brisbane?	90
Cost of Living in Brisbane	91
Things to do in Brisbane	92
Brisbane Events Calendar	93
Langports Gold Coast School	94
Langports Gold Coast School - Surroundings	95
Why Choose the Gold Coast?	96
Cost of Living on the Gold Coast	97
Things to do on the Gold Coast	98
Gold Coast Events Calendar	99
Langports Sydney School	100
Langports Sydney School - Surroundings	101
Why Choose Sydney?	102
Cost of Living in Sydney	103
Things to do in Sydney	104
Sydney Events Calendar	105
Multi Destinations	106
Policies and Procedures - Transfer Between Schools	107
Activities at Langports	108
Langports iPhone & Andriod application	109
Langports Virtual Tours	109
Policies	
Policies and Procedures - Cancellations and Refund	112
Policies and Procedures - Student Holiday	114
Policies and Procedures - Re-Enrolment	115
Policies and Procedures - Under 18 Students	115
Policies and Procedures - Agent Discounting	116
Regional Pricing	116
TPS & Instalments	117
Frequently Asked Questions - General information - Emergency Contacts	118
Applying for a Student Visa (subclass 500) - Genuine Temporary Entrant Criterion	122



LANGPORTS

Courses

Study Options

Langports aims to be unique in all ways: in what it does, in what it offers and in what it achieves. We are constantly striving to get the best outcomes for our students. To achieve these objectives, Langports offers innovative English courses matching the needs of students.



UFO English - available in all schools

UFO English was created so that Langports students can get the maximum benefit from their studies with personalised timetables.

U = Use of English

F = Focus on language skills (Macro skill program - Listening, Speaking, Reading, Writing)

O = Options to specialise

WORKSHOPS = Give students an even greater opportunity to enhance their study with relevant and interesting topics

Cambridge - FCE, CAE & CPE available in all schools - All guaranteed to run

The Cambridge courses provide intensive overall English Language Proficiency development as well as examination preparation and practice, with the exam strategies and techniques as a particular focus. The course includes mock exams with individual feedback given to each student about their strengths and weaknesses, so that they can develop the best study strategy to pass. Langports is an official Examination Centre for these exams.

Cambridge Flexi - PET, FCE, CAE available in all schools

As the name suggests, Cambridge Flexi provides students with a Cambridge course that has flexible start and finish dates. Whilst it is not as intensive as the traditional closed course, it is ideal for students who, due to work or other commitments, are unable to attend the closed course. In our 10 week Cambridge Flexi course, students study a mixture of general English and exam preparation. Students can start on any Monday, with a minimum study period of 4 weeks.

IELTS - available in all schools

IELTS is our intensive IELTS preparation program focusing on the academic version of the IELTS exam. The IELTS course focuses on more than just the exam; it also focuses on learning strategies and on language development skills. The course prepares students to take the IELTS examination and leads students to a sufficient level to enter our English for Academic Purposes course. All teachers are highly experienced and trained in exam taking tips and techniques.

EAP - English for Academic Purposes - available in all schools

This course is a combination of IELTS preparation and Academic English that is designed to ensure success for students wishing to undertake further studies in Australia. Langports also has a number of university and vocational college partners providing students with Direct Entry pathways.

TOEIC + - available in all schools

TOEIC + focuses on more than just the exam. This 5 weeks course also focuses on learning strategies and on language development skills. Langports is a TOEIC Testing Centre and each school has a TOEIC proctor on staff. The teachers are highly experienced and trained in exam taking tips and techniques. During this course, Langports uses its own unique materials. Students are also given regular progress reports to help them achieve their objectives.

Langports Platinum Program - available in the Brisbane school

If students are interested in learning more about Australia, studying English, and meeting like-minded friends from around the world, then this is the program for them. Our Langports Platinum Program is dedicated to 40+ students and is designed to maximise their time in Australia by combining English study, Australian culture and activities.



What happens on the first day at Langports

On their first day students need to arrive by 8:45am with their passport. Students are then given information on staff members, school information and a tour of the city.



Integrated with the orientation is student level testing. There are 5 tests that rate the students' overall English ability and their macro skills of Speaking, Reading, Listening and Writing. Testing takes approximately 1 hour and 30 minutes. Once these tests are completed the students studying full time, have lunch and attend their first class from 1.25pm.

What happens on the first day?	
8:45 am	Students arrive at school and are greeted by reception staff. They receive a Langports information pack. Students should also bring their passport as we also take a copy of their passport and visa for their file. A photo is taken and student ID card is made.
9:00 am	The Principal welcomes the students to Langports and meet other staff members. They complete their registration form with information information such as local address, mobile phone number and email address.
9:30 am	Students take the placement test that includes overall proficiency testing paper, reading/listening/writing/speaking tests.
11:00 am	Students have a guided tour of the city (banks, post office, shopping mall, public transport and more).
11:40 am	Power point presentation about key Langports staff, information about student services, accommodation and activities.
12:25 pm	Lunch break, meeting other Langports students.
1:25 pm	Full time students meet and are introduced to their teachers and taken to the afternoon class. Finish at 2.40pm.

On the first day,

- Each student receives a student ID
- We take a picture of the new students

First Day Tour of the city



WHAT IS IT?

A unique general English course specially designed to meet the needs of individual students.



Use of English A student's Use of English level is decided by the average of their test results on the first day. This class provides an English lesson that focuses on Grammar, Vocabulary, Pronunciation and Integrated Skills.

Focus English The Focus class is the macro-skill program, where on each day (Tuesday – Friday) students attend a separate macro-skill class to help improve their strengths and weaknesses. As students may have more than one level depending on their results in Speaking, Reading, Listening and Writing, they are placed in different classes. While the lessons will “focus” on the macro skills, they will also incorporate all components of language learning. For example, the writing class “focuses” on writing, but speaking, listening and reading elements play a part in this class too.

Options The option class gives students a choice of what they study, depending on their level. Students studying full-time can choose an option class from a variety of subjects enabling them to achieve their learning objectives.

Langports offers options from beginner to advanced level (subject to availability): See page 16

Workshops Give students an even greater opportunity to enhance their study with relevant and practical topics. See page 17



Students with an 80% or above attendance record will be awarded a certificate.

KEY POINTS

- Intensive General English
- 6 Levels from Elementary to Advanced
- Start any Monday (except for public holidays)
- Available in all our schools
- Excellent nationality mix
- Maximum 18 students per class
- Average class size is 14 students per class
- **Full Time 25 hours per week** (20 hours compulsory + 3 hours of optional workshops + 2 hours optional activities)
 - Timetable - Monday - Thursday 9am to 2.40pm plus Optional Workshops from 2.50pm - 3.35pm Friday 9am to 12.25pm + Graduation + optional activities
- **Part Time 15 hours per week**
 - Timetable - Monday - Friday 9am to 12:25pm
- Students always study at the correct level for their macro skills (Speaking, Listening, Reading, Writing)
- Every student has a personal timetable created around their abilities, strengths & weaknesses
- Students have a wide range of classmates and the opportunity to make more friends in each class
- Student's progress is monitored weekly through the Langports Study Plan (LSP) and through weekly one-to-one counseling

HOW DOES IT WORK?

We would like to show you how the UFO English program benefits our students, by illustrating examples of the following three students who all arrived at Langports on the same day:



Aya
(Japan)

Level check test results

USE	3
Writing	3
Reading	3
Listening	2
Speaking	2

Goal: improve her communication skills



Bruno
(Brazil)

Level check test results

USE	3
Writing	4
Reading	3
Listening	4
Speaking	4

Goal: study MBA in Australia

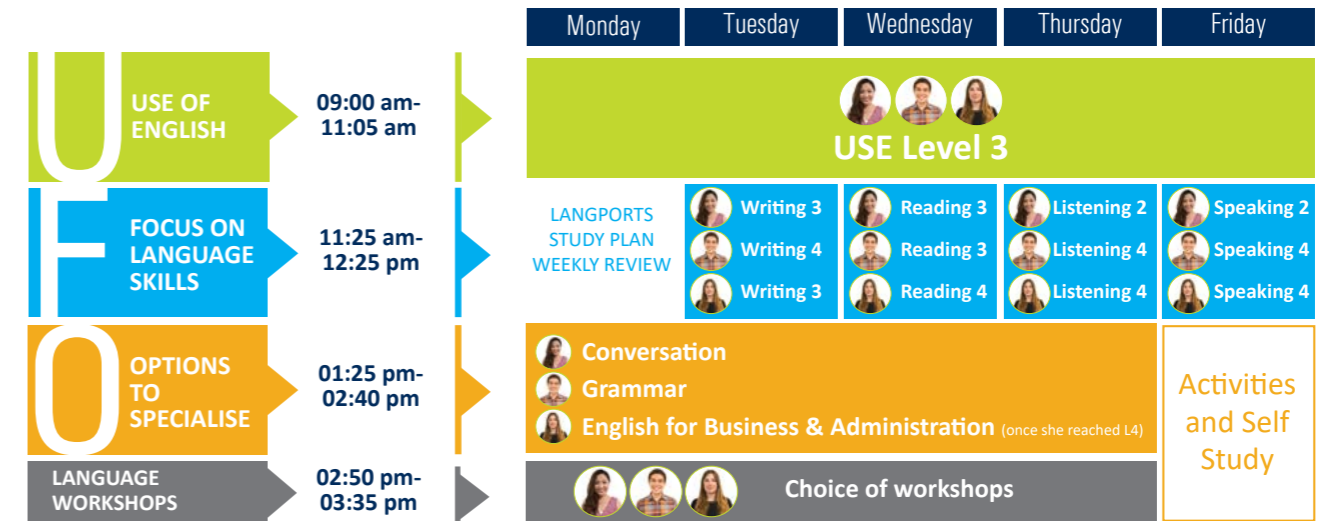


Sarah
(Switzerland)

Level check test results

USE	3
Writing	3
Reading	4
Listening	4
Speaking	4

Goal: improve her English for work



OPTIONS: Subject to availability (if less than 8 students are interested in joining an option, it will be available for self-study)

Elementary English (L1-2)	Grammar (L2-3, L4-5)	EES: English for Engineering & Science (L4-6)
Conversation (L2-3, L4-5)	IBE: Introduction to Business English (L2-3)	EFL: English for Finance & Law (L4-6)
Vocabulary (L2-3, L4-5)	EBA: English for Business & Administration (L4-6)	EMI: English Through Media & the Internet (L4-6)

WORKSHOPS: Subject to availability Interested students must register for the workshops each week

- Extension English (L2+)** – This workshop is split into two levels (Level 2 & 3, Levels 4 and above) and assists students with completing homework and extra work activities. The focus is on creating a collaborative study environment where students help each other under the guidance of the teacher.
- Aussie English (L3+)** – A 5-week course looking at vocabulary, idioms and slang in an Australian context. It includes authentic Australian listening practice and every day Australian language.
- English for Work in Australia (L2+)** – A 5-week workshop for students interested in working in Australia. This includes learning about applying for a tax file number, a bank account and searching for a job. It also shows how to write a Resume and focuses on practicing interview questions.
- Exam Techniques and Tips (L4+)** – A 5-week workshop for Level 4 and above students helping them understand the IELTS, TOEIC & Cambridge exams. This includes how the exams are structured and useful hints for passing the various sections of the tests.

UFO English... English and Professional Option Classes

As part of the UFO English full-time program, students will have the opportunity to choose from one of the afternoon option classes, which give students a choice of what they study, depending on their level and interests. Students studying full-time can choose an option class from a variety of subjects enabling them to achieve their learning objectives. The choices are dependent on their English level and the availability, but they can choose from:

<h3>English options</h3> <ul style="list-style-type: none"> Level 2/3 Elementary English Level 2/3 Conversation (Level 4/5) Level 2/3 Vocabulary (Level 4/5) Level 2/3 Grammar (Level 4/5) 	<h3>I.B.E (Introduction to Business English Option)</h3> <p>Students who take the Introduction to Business English Option will learn the fundamental language to be able to: Level 2/3</p> <p>make arrangements, talk about work and leisure, introduce themselves, make a booking, identify problems in the work place, make a presentation, negotiate and participate in interviews.</p> <p>TOPICS:</p> <ul style="list-style-type: none"> The Web Cultures Jobs Sales People Companies Work and Leisure Problems Markets Travel Food and Entertainment 		
<h3>E.B.A (English for Business & Administration)</h3> <p>TOPICS: Level 4 to 6</p> <ul style="list-style-type: none"> Brands & Marketing Business Travel Change & Business Meetings Business Organisation Advertising Money Cultural Awareness in Business Human Resources International Markets Ethics Leadership Competition Making Contacts Decision Making Consumer Confidence Presentations & Small Talk Problem Solving Environmental Responsibility Business Protocol Management Culture 	<h3>E.E.S (English for Engineering & Science)</h3> <p>TOPICS: Level 4 to 6</p> <table border="0"> <tr> <td> Engineering <ul style="list-style-type: none"> Technology in use Materials technology Component & assemblies Engineering design Breaking point Technical development Procedures & precautions Monitoring & control Theory & practice Pushing the boundaries </td> <td> Science <ul style="list-style-type: none"> Getting started in research The scientific community Finding a direction for your research Designing an experiment Describing and experiment Research materials & methods Presenting data Results & discussions Introduction & abstract Presenting research at a conference </td> </tr> </table>	Engineering <ul style="list-style-type: none"> Technology in use Materials technology Component & assemblies Engineering design Breaking point Technical development Procedures & precautions Monitoring & control Theory & practice Pushing the boundaries 	Science <ul style="list-style-type: none"> Getting started in research The scientific community Finding a direction for your research Designing an experiment Describing and experiment Research materials & methods Presenting data Results & discussions Introduction & abstract Presenting research at a conference
Engineering <ul style="list-style-type: none"> Technology in use Materials technology Component & assemblies Engineering design Breaking point Technical development Procedures & precautions Monitoring & control Theory & practice Pushing the boundaries 	Science <ul style="list-style-type: none"> Getting started in research The scientific community Finding a direction for your research Designing an experiment Describing and experiment Research materials & methods Presenting data Results & discussions Introduction & abstract Presenting research at a conference 		
<h3>E.F.L (English for Finance & Law)</h3> <p>TOPICS: Level 4 to 6</p> <table border="0"> <tr> <td> Finance <ul style="list-style-type: none"> The organisation of the financial industry Retail banking Loans & credit Accounting Central banking Financing international trade Foreign exchange Stocks & shares Mergers & acquisitions Derivatives & asset management </td> <td> Law <ul style="list-style-type: none"> A career in law Contract law Tort law Criminal law Company law Commercial law Real property law Litigation & arbitration International law Comparative law </td> </tr> </table>	Finance <ul style="list-style-type: none"> The organisation of the financial industry Retail banking Loans & credit Accounting Central banking Financing international trade Foreign exchange Stocks & shares Mergers & acquisitions Derivatives & asset management 	Law <ul style="list-style-type: none"> A career in law Contract law Tort law Criminal law Company law Commercial law Real property law Litigation & arbitration International law Comparative law 	<h3>E.M.I (English Through Media & the Internet)</h3> <p>Every week English is taught through a variety of media including: Level 4 to 6</p> <ul style="list-style-type: none"> Articles Podcasts Tedtalks Drama Comedy Action Suspense Online Australian news Online World news Online radio Reports Interviews Skits / Role Play Film Reviews
Finance <ul style="list-style-type: none"> The organisation of the financial industry Retail banking Loans & credit Accounting Central banking Financing international trade Foreign exchange Stocks & shares Mergers & acquisitions Derivatives & asset management 	Law <ul style="list-style-type: none"> A career in law Contract law Tort law Criminal law Company law Commercial law Real property law Litigation & arbitration International law Comparative law 		



UFO English... Workshops

WORKSHOPS give students an even greater opportunity to enhance their study with relevant, practical and interesting topics. (Subject to availability)

Extension English (L2+)

This workshop is split into two levels (Level 2 & 3, Level 4 and above) and assists students with completing homework and extra work activities. The focus is on creating a collaborative study environment where students help each other under the guidance of the teacher.

English for Work in Australia (L2+)

A 5-week workshop for students interested in working in Australia. This includes learning about applying for a tax file number, a bank account and searching for a job. It also shows how to write a Resume and focuses on practicing interview questions.

Aussie English (L3+)

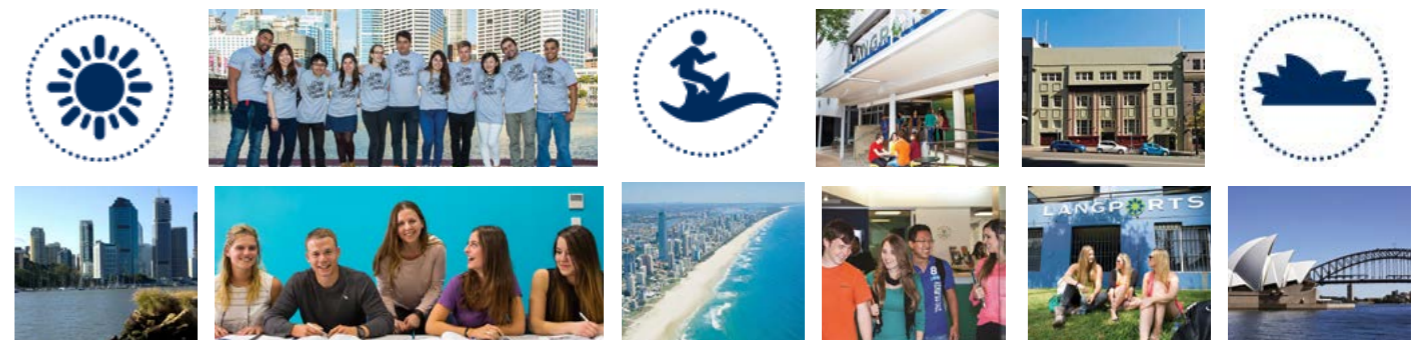
A 5-week course looking at vocabulary, idioms and slang in an Australian context. It includes authentic Australian listening practice and every day Australian language.

Exam Techniques and Tips (L4+)

A 5-week workshop for Level 4 and above students helping them understand the IELTS, TOEIC & Cambridge exams. This includes how the exams are structured and useful hints for passing the various sections of the tests.

Interested students must register for the workshops each week.

Workshops are based on a 5-week curriculum but students can choose to study a workshop for 1, 2, 3 or 4 weeks only if they prefer. Students can also choose a different workshop every week.



What is Cambridge Choice?

Langports Cambridge Choice is a suite of exam preparation courses. Langports Cambridge Choice offers closed courses for FCE (First), CAE (Advanced) and CPE (Proficiency) and 3 open courses: PET, FCE and CAE Flexi.

Cambridge Suite Examinations have worldwide recognition and are specially designed for international students who are aiming to improve their overall proficiency in English, mainly for work or further study purposes. Most universities accept the CAE qualification and the Department of Immigration and Citizenship, DIAC, in Australia recently approved the use of the CAE for permanent residency application.

Why choose Langports for Cambridge Exam Courses?

- Our Cambridge teachers are highly skilled in English Language teaching and experienced in helping students meet their goals.
- Our teaching style is unique: we have our own Langports way of teaching. Our teachers are specialised in Cambridge preparation and are trained in lexical-grammatical approaches to language teaching and learning.
- Many of our resources are unique: we write and publish our own materials for this course, supplemented with material from traditional Cambridge textbooks.
- Langports guarantees to run all Cambridge courses as published
CPE course is guaranteed to run, meaning that in any situation, students will only receive CPE focussed tuition, with the following conditions:
-if 3 to 10 students are enrolled for the course, they will receive 23 hours per week of CPE tuition + 2 hours of optional activities or self-study.
-if only 1 or 2 students are enrolled for the course, then they will receive 15 hours per week of CPE tuition + 2 hours per day of supervised self-study (with a teacher available to answer any questions).

Langports is an official Cambridge examination centre. Visit the Exams Centre website; www.langportsexams.com



FCE, CAE and CPE (closed courses)

- Designed for delivery over 10 or 12 weeks, depending on the start date.
- A pre-test is required before enrolment is confirmed and students are re-tested on their first day at Langports.
- All students must sit the exam at the end of the courses.
- Students are required to take part in the Cambridge retreat – an excellent team building activity unique to Langports that gives Cambridge students the opportunity to bond together with their classmates on a day trip filled with typical Australian activities such as surfing.

PET, FCE & CAE Flexi (open courses)

- PET Flexi: students study full-time with all morning classes covering all components of the PET curriculum and utilising PET focused material. In the afternoon, students choose the most appropriate Option class for their particular study needs.
- FCE Flexi: students study full-time with all morning classes covering all components of the FCE curriculum and utilising FCE focused material. In the afternoon, students choose the most appropriate Option class for their particular study needs.
- CAE Flexi: students study full-time with the first morning class focusing on the 4 macro skills of reading, writing, listening and speaking using the Advanced Outcomes textbook and their mid-morning class focusing on CAE preparation with CAE focused material. In the afternoon, students choose the most appropriate Option class for their particular study needs.
- Flexi students can also attend non-compulsory Language Workshops offered Monday - Thursday. Workshops are subject to availability.
- Flexible start and finish dates – students can join a class any Monday and study from 4 – 10 weeks. This option is ideal for students who cannot take the closed course.
- A pre-test is required before enrolment is confirmed and students are re-tested on their first day at Langports.
- Students are not required to take the examination, but will be entered if requested.



Closed courses

Cambridge FCE, CAE & CPE start dates
B=Brisbane, G=Gold Coast, S=Sydney

2020 Dates

- 30 December (CPE) B
- 6 January (FCE & CAE) B, G, S
- 16 March (FCE & CAE) B, G, S
- 16 March (CPE) B
- 7 September (FCE & CAE) B, G, S
- 7 September (CPE) G

Quick facts:

- Hours per week: 25 (including 2 hrs optional activities)
- Max class size: FCE & CAE: 16
CPE: 10
- Average class size: FCE & CAE: 12
CPE: 6

Key points:

- Cambridge Exam and Cambridge retreat compulsory
- Pre-test required

Flexi Courses

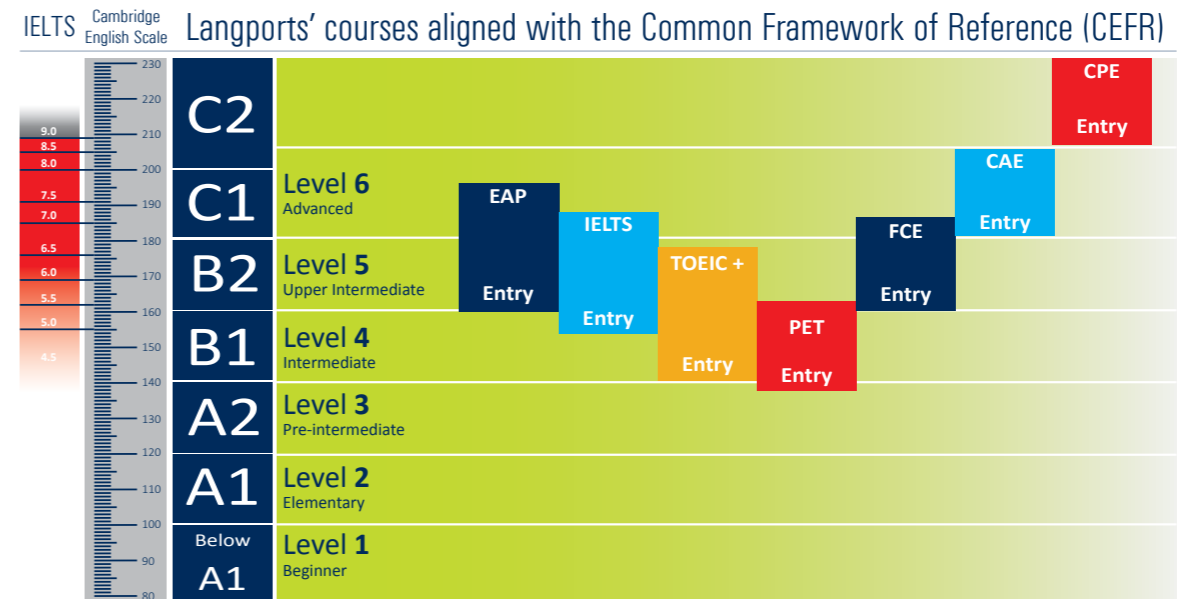
Quick facts:

- Hours per week: 25 (including 3 hrs Optional Workshops and 2 hrs optional activities)
- Max/Average class size: 16/12
- Length of course: 4-10 weeks

Key points:

- Start any Monday
- Available in PET, FCE and CAE
- Exam is optional
- CAE Flexi Only available for Working Holiday & Tourist Visas
- Pre-test required

Langports' courses aligned with the Common Framework of Reference (CEFR)



*exit level depends on the entry level of the student

Sample Timetables

Cambridge Closed Course

	Monday	Tuesday	Wednesday	Thursday	Friday
Vocabulary, Grammar, Integrated Skills and Pronunciation					
09:00 - 11:05	Grammar: Phrasal verbs Weekly Progressive Assessment	Vocabulary: Noun suffixes Speaking & Listening	Exam preparation: Multiple matching Vocabulary Review	Grammar: Multiple choice Reading	Grammar: Model verbs Writing
11:05 - 11:25 MORNING BREAK					
11:25 - 12:25	Individual Feedback	Reading: Multiple matching	Listening: Practice test	Use of English: Practice test	Speaking: Parts 1-4
12:25 - 1:25 LUNCH BREAK					
1:25 - 2:40	Language Practice	Use of English	Exam Practice & Guidance	Exam Practice & Guidance	Afternoon Activities Volunteering Exam Practice Off campus activity Special interest groups
2:50 - 3:35	Grammar: Future forms	Practice test: Use of English	Reading: Analysis of questions	Writing: Practice test part 1	

Cambridge Flexi Course

	Monday	Tuesday	Wednesday	Thursday	Friday
PET, FCE or CAE Flexi class Grammar skills development, Use of English training and Vocabulary building.					
11:05 - 11:25 MORNING BREAK					
PET, FCE or CAE Flexi class Macro skills training, Exam strategies and Fluency development.					
12:25 - 1:25 LUNCH BREAK					
1:25 - 2:40	Choice of UFO English Options class (subject to availability): Conversation Grammar EES: English for Engineering & Science EMI: English Through Media & the Internet				Afternoon Activities Volunteering Exam Practice Off campus activity Special interest groups
2:50 - 3:35 Language Workshops include: Extension English, Aussie English, English for Work in Australia, Exam Techniques and Tips					



What is TOEIC?

The Test of English for International Communication (TOEIC) is the world's leading English test, taken each year by more than five million people around the world. TOEIC assesses English language competency in a business context and is used by companies around the world to determine English communication skills. The TOEIC test measures listening and reading (grammar, vocabulary and collocation) abilities and takes two hours to complete.

- TOEIC is internationally recognised by 10 000 companies, academic institutions and government organisations.
- TOEIC is a very reliable test, developed by ETS (Educational Testing Service), the designers of TOEFL and GMAT.
- TOEIC test results are delivered soon after the test has been taken and they are easy to understand.
- Certificate valid for life.

What is TOEIC Plus?

- TOEIC Plus is a 5 week program that provides students with test taking skills for the TOEIC exam. At the end of this course, students will demonstrate the necessary skills to take the TOEIC exam.
- TOEIC Plus is a unique course that aims to improve students' English language competency. Students extensively focus on grammar, vocabulary, reading, collocation and listening.
- TOEIC Plus is available at our Brisbane, Gold Coast and Sydney schools.

Overview:

TOEIC Plus 5-week closed course:

- Significant English improvement.
- Intensive focus on grammar & vocabulary.
- Fun and motivating.
- Helps with the preparation for the TOEIC exam.



Closed courses

TOEIC Plus start dates

B=Brisbane, G=Gold Coast, S=Sydney

2020

- 3 Feb - B,G,S
- 3 Aug - B,G,S
- 9 Mar - B,G,S
- 7 Sep - B,G,S
- 14 April - B,G,S
- 12 Oct - B,G,S
- 18 May - B,G,S
- 16 Nov - B,G,S
- 22 June - B,G,S

Quick Facts

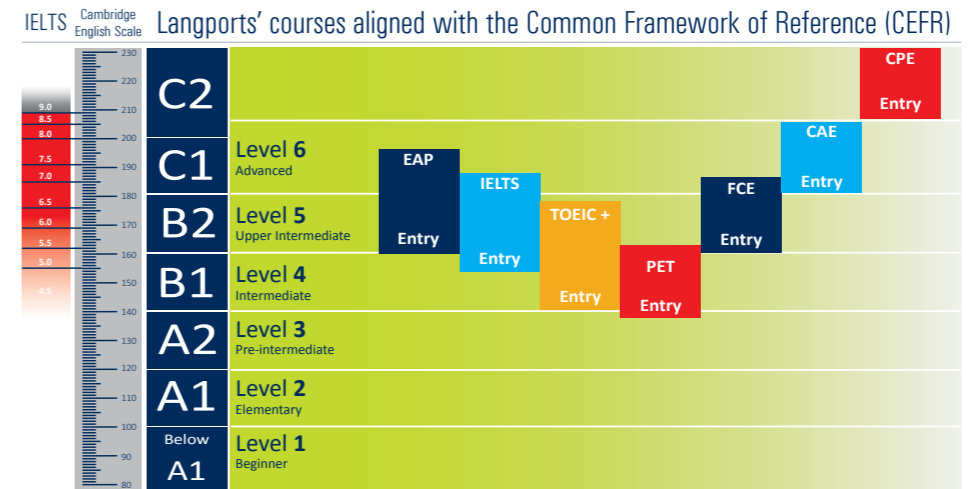
- Course type: business skills & exam preparation courses
- Hours per week: 25hrs (Including 3 hrs Optional Workshops and 2 hrs optional activities)
- Max class size: 18
- Average class size: 14

Key points

- Pre-test required
- Entry level
 - * TOEIC Plus: pre-intermediate
- Closed classes
- All students are given regular progress reports.
- English Plus courses use their own unique Langports materials.
- Langports teachers are highly experienced and trained in exam taking tips and techniques.



Langports' courses aligned with the Common Framework of Reference (CEFR)



*exit level depends on the entry level of the student



Cristian from Chile.

"I chose the TOEIC + course because I wanted to learn the fundamentals of English grammar. The course is designed for Intermediate level students who want to improve their English quickly while preparing for the International TOEIC exam. Even though we had homework every day, my experience was still amazing. We did writing, gave presentations and talked together. The teacher has excellent knowledge of English and teaches with incredible methods. You can feel his friendship and support all the time. I recommend the TOEIC + course to students who want to improve all areas of their English. At the end of the course you will feel that your English is much better and you will be happy to have met such wonderful people."

Fernando from Brazil

"I chose TOEIC + because I wanted a change from General English. I like that we have one teacher and the same classmates for the whole course. The teacher has good examples and knows what each student needs. I am a lawyer in Brazil and I want to study International Law in Australia when my English is good enough. The TOEIC + program helped me with lots of useful vocabulary for working in an English speaking country. I enjoyed the TOEIC+ at all times because it was easy to learn in this class. There were lots of different people from different countries in my class so I learnt a lot about the world as well."



TOEIC Plus Course

Sample Timetable

	Monday	Tuesday	Wednesday	Thursday	Friday
09:00 - 11:05	Weekly summary test Individual feedback with teacher	Exam Skills			
		Grammar: Comparatives & Superlative	Vocabulary: Phrasal verbs	Grammar: Adverb Placement	Speaking: Describing pictures
11:05 - 11:25	MORNING BREAK				
11:25 - 12:25	Listening: Listening to four statements about a photograph	Reading: Text completion	Speaking: Reading text aloud	Listening: Understand talks given by a single speaker	Reading: Incomplete sentences
12:25 - 1:25	LUNCH BREAK				
1:25 - 2:40	Vocabulary: Word transformations	Speaking: Research and preparation for oral presentation	Listening: Practice test	Writing: In class task	Afternoon Activities Volunteering Exam Practice Off campus activity Special interest groups
	Pronunciation: Linking	Speaking practice: Peer work	Speaking practice: Responding to questions	Speaking practice: Responding to questions	
2:50 - 3:35	Language Workshops include: Extension English, Aussie English, English for Work in Australia, Exam Techniques and Tips				



What is IELTS?

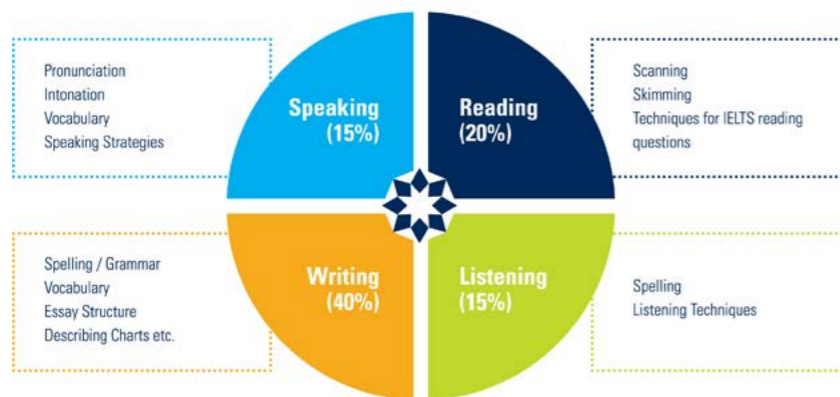
- The International English Language Testing System (IELTS) is an exam that assesses the English language proficiency of people who want to study or work in an English speaking environment.
- There are two versions of the IELTS exam: academic and general. Students can select either of these versions depending on their goals. Whilst there are two versions, only the reading and writing components differ.
- IELTS can be taken in 49 centers in Australia. There are 9 centers in Sydney, 5 centers in Brisbane and 1 center on the Gold Coast.
- Students must book the exam directly with an IELTS test center. (See www.ielts.org)



What makes Langports' IELTS course different?

- Langports' unique intensive IELTS preparation programs focus specifically on the academic version of the IELTS exam.
- This program was created to improve not only the 4 macro skills essential for IELTS (listening, reading, speaking and writing) but also to provide an in-depth focus on micro skills such as reading techniques, spelling, grammar and speaking test strategies.
- IELTS has a strong focus on the writing component of the exam. A high level of IELTS requires a good range of vocabulary, collocation, grammar and writing skills.
- IELTS teachers are extensively trained in grammar and they are also trained to teach beyond the textbook (under the LAW™). Own original materials, supplemented with traditional and online IELTS materials.

Course Components



IELTS is the best choice for students who:

- Would like to pursue further tertiary education and need to use English in a formal academic setting.
- Need an intensive IELTS academic exam preparation and have limited time to prepare for the exam.
- Understand that IELTS is more than learning the techniques to answer the exam and are committed to improving their English language proficiency overall.

IELTS Course Start Dates

B=Brisbane, G=Gold Coast, S=Sydney

2020

- 3 Feb - B,G,S
- 9 Mar - B,G,S
- 14 April - B,G,S
- 18 May - B,G,S
- 22 June - B,G,S
- 3 Aug - B,G,S
- 7 Sep - B,G,S
- 12 Oct - B,G,S
- 16 Nov - B,G,S

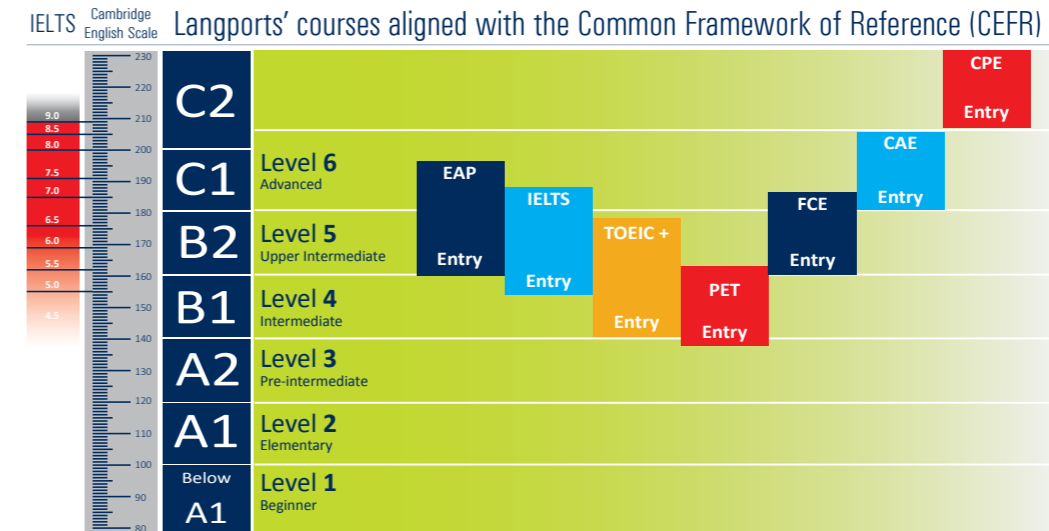
Quick facts

- Pre-test required
- Entry level requirements: IELTS: intermediate
- Hours per week: 25hrs (Including 3 hrs Optional Workshops and 2 hrs optional activities)
- Max class size: 18
- Average class size: 14

Key points:

- Closed classes
- Experienced IELTS teachers with special training for this course
- Own original materials, supplemented with traditional materials
- Extensive use of new technology by teachers
- Regular progress reports and feedback from teachers

Langports' courses aligned with the Common Framework of Reference (CEFR)



*exit level depends on the entry level of the student



"The Langports IELTS course had a dynamic and challenging environment. The teamwork between the teachers and students made me feel excited about studying again. The constant interest in learning and the perseverance of individual class members motivated me to push myself and try to be the best in class. The intensity of the course and the solid knowledge of the teachers made my writing and reading skills improve considerably. Today I can proudly say that I reached my goal! I got the required score on the exam to run for scholarships abroad and most importantly, I improved my skills in reading, writing and listening widely. For those who require IELTS for professional and personal development this course is just ideal!"
- Andrea, Colombia, result - IELTS 7.0

IELTS Course

Sample Timetable

	Monday	Tuesday	Wednesday	Thursday	Friday
09:00 - 11:05	IELTS listening test IELTS Grammar: Active & Passive IELTS Writing task 1: Active & passive voice	IELTS Grammar IELTS Vocabulary: Phrases for essay IELTS Writing task 1: Passive structures	IELTS listening test IELTS Grammar: Auxiliary verbs and their use in essay writing IELTS Vocabulary	IELTS Reading test IELTS Writing task 2: Structure, format, requirements, cohesion and coherence	IELTS listening test IELTS speaking: Individual speeches in front of the class
11:05 - 11:25	MORNING BREAK				
11:25 - 12:25	Academic word list vocabulary	IELTS Reading: 'YES/NO/NOT GIVEN' IELTS listening: Practice of part 2	IELTS Writing task 2: Avoiding generalisations in essays	IELTS Reading	IELTS Writing task 1+2: Practice test
12:25 - 1:25	LUNCH BREAK				
1:25 - 2:40	IELTS Reading: 'YES/NO/NOT GIVEN' IELTS Listening: Introduction to part 2 and required techniques & strategies	Academic word list vocabulary IELTS Speaking: Individual speeches in front of class	Academic word list vocabulary IELTS Speaking: Individual speeches in front of class	IELTS Listening: Practice of part 2 IELTS Writing: Using passive, common structures and auxiliary verbs	Afternoon Activities Volunteering Exam Practice Off campus activity Special interest groups
2:50 - 3:35	Language Workshops include: Extension English, Aussie English, English for Work in Australia, Exam Techniques and Tips				

What is English for Academic Purposes?

Langports EAP program is designed for international students who need intensive preparation to take further studies in Australia. It combines the two elements required to enter and succeed in a vocational or tertiary program in Australia: IELTS exam preparation and academic preparation.

EAP is delivered in 2 times 6 week modules, with the expectation that students exit after 12 weeks with an IELTS score which will help them to meet the entry requirements of their chosen tertiary institutions, or an equivalent level to take one of Langports pathways.

Over the 2 x 6 week modules, students are taught how to complete tasks and assignments expected at a university level, including:

Module A

- Research Proposal
- Annotated Bibliography
- 2000 word academic essay
research skills, speed reading, notetaking, drafting, writing, referencing & annotated bibliography
- IELTS Academic Reading, Listening & Speaking
- Academic Vocabulary
- Study & Research Skills

Module B

- Group Research Seminar
- Individual Research Presentations
students can become confident presenting academic material in front of their class
- IELTS Academic Writing Part 1
- IELTS Academic Writing Part 2
- Academic Vocabulary
- Study & Research Skills



Course Start Dates

B=Brisbane, G=Gold Coast, S=Sydney
New EAP Modular Program Start Dates
12 weeks= 2 x 6 week modules

2020

- 13 January - EAP module A (B, S)
- 24 February - EAP module B (B, S)
- 6 April - EAP module A (B, S)
- 18 May - EAP module B (B, G, S)
- 29 June - EAP module A (B, G, S)
- 10 August - EAP module B (B, S)
- 21 September - EAP module A (B, S, G)
- 2 Novembre - EAP module B (B, S, G)

Quick facts

- Course type:**
- Academic English & IELTS preparation
- Hours per week: 25hrs (including 3 hrs Optional Workshops and 2 hrs optional activities)
- Max class size: 18
- Average class size: 14
- Length of course: 6 or 12 weeks
- Pre-test required

Key points:

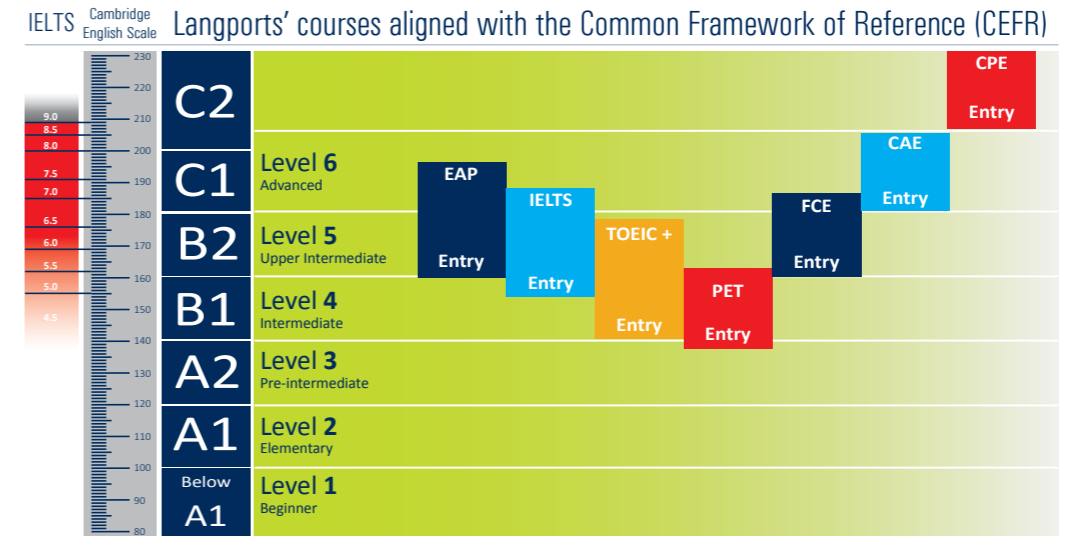
- 2 x 6 week module, students can study 6 or 12 weeks
- 12 weeks required for direct entry to pathways institutions
- Entry level: upper intermediate (IELTS 5.0 - with no sub-band less than 5.0)
- Closed classes
- Available at all our campuses
- Excellent nationality mix
- Langports uses its own materials, supplemented with traditional materials
- Progress reports and feedback from their teachers

These agreements were in place at time of publication.

EAP course is the best choice for learners who:

- Will need to use English in an academic course setting
- Are adult students wanting to enter an award program at university or TAFE level
- Need to improve their English language proficiency
- Need to use and learn English in an English speaking environment
- Need to take the IELTS exam (usually in order to undertake further study in Australia)
- Have a limited amount of time for their learning

Langports' courses aligned with the Common Framework of Reference (CEFR)



*exit level depends on the entry level of the student

Natalia from Colombia:

"From my point of view, the EAP program is an excellent option for students who are interested in applying to any tertiary education program in Australia, and in improving their academic skills. Langports also provides us with a variety of activities allowing us to improve our level, make new friends and enjoy the facilities and attractions of Brisbane. I now feel prepared to take the IELTS exam, and I have more tools to achieve the challenge of doing a masters degree in my second language."



Hans from Taiwan:



"After 12 weeks of studying in the EAP Program, I improved my IELTS score to an overall score of 7.0! It was really amazing! If anyone asks me how I did it in such a short period of time, I will give all the credit to my teacher, EAP and Langports!"

After his course, Hans decided to study Sport Management at Griffith University.

EAP Course

Sample Timetable

	Monday	Tuesday	Wednesday	Thursday	Friday
09:00- 11:05	IELTS practice test: Writing & listening	Intensive IELTS preparation			
		Grammar: Multiple choice and summary completion.	Speaking: time management	Writing: task 2 structuring an argument	Speaking: Describing people
11:05- 11:25	MORNING BREAK				
11:25- 12:25	IELTS practice test: Reading and Speaking Progress Review	Academic assignment preparation skills			
		IELTS Writing task	Listening: Listening to an academic. Lecture note taking	Reading: Reading for detail, reading critically, synthesising arguments	Reading: Reading for detail, reading critically, synthesising arguments
12:25- 1:25	LUNCH BREAK				
1:25- 2:40	Research Skills: Visit library for introduction to Journals	Research Skills: Review, assess and copy articles relevant to field of study	IELTS Practice Test Reading: Practice test & analysis of questions and responses	Speed Reading: Identify topic sentences; summarise articles	Afternoon Activities Volunteering Exam Practice Off campus activity Special interest groups
2:50- 3:35	Language Workshops include: Extension English, Aussie English, English for Work in Australia, Exam Techniques and Tips				



Langports' Pathways

Langports students who successfully completed our EAP course with results equivalent to our partner schools' IELTS requirement may be able to enter directly into certain programs offered at these institutions.



CRICOS – 03545J

For courses normally requiring IELTS 5.5, Academy of Entrepreneurs accepts:

- 60% or higher on Langports EAP course
- Pass on Cambridge First (FCE)
- Completion of Level 5 on Langports UFO English program



CRICOS – 00004G.

Students who successfully complete the Langports EAP course with the level of English proficiency required for entry to their nominated ACU degree program will be guaranteed admission into ACU by completing a 5 week University Preparation Course.

Langports 12 week EAP → ACU 5 week Uni Prep → ACU Degree Program



CRICOS Code: 02425C

Students may enter Aviation Australia programs upon successful completion of any of the following courses with results required to achieve IELTS 5.5 equivalency:

- Successful completion of Level 5 UFO English
- Successful completion of EAP course
- Successful completion of FCE Cambridge Exam Preparation course



The Australian Learning Group will accept students with the following certificates:

- EAP: certificate with a score in the 56-65% band or above
- General English (UFO) Upper Intermediate with a minimum of 10 weeks of successful study at that level and a reference letter from the Director of Studies
- General English (UFO) Advanced (Langports level 6) with no minimum requirement
- Successful completion of the Cambridge FCE or CAE courses
- Completion of the IELTS 1 preparation course with a completion certificate equivalent to a minimum of IELTS 5.5

CRICOS Code: 03071E



CRICOS Code: 00017B

Students may enter any programs upon successful completion of the EAP course with results required to achieve IELTS equivalency:

- 85% in Langports' EAP= Academic IELTS 7.0 equivalence
- 75% in Langports' EAP= Academic IELTS 6.5 equivalence
- 65% in Langports' EAP= Academic IELTS 6.0 equivalence
- 60% in Langports' EAP= Academic IELTS 5.5 equivalence



CRICOS Code: 03432G

For courses normally requiring IELTS 5.5, Entrepreneur Education accepts:

- 60% or higher on Langports EAP course.
- Pass on Cambridge First (FCE).
- Completion of Level 5 on Langports UFO English program.

Langports' Pathways



CRICOS Code: 02898C

For courses normally requiring IELTS 5.5, Everthought College of Construction accepts:

- 60% or higher on Langports EAP course
- Pass on Cambridge First (FCE)
- Completion of Level 5 on Langports UFO English program



CRICOS Code: 03464K

For courses normally requiring IELTS 5.5, Gold Coast Dive Centre accepts:

- 60% or higher on Langports EAP course.
- Pass on Cambridge First (FCE)
- Completion of Level 5 on Langports UFO English program.



CRICOS Code: 01737F

Students with successful completion of 12 weeks EAP course may enter diploma courses including: Commerce, Graphic Design, Hotel Management, Information Technology, Biosciences and Engineering and Certificate IV in University Foundation Studies (CUFS):

- Successful completion of the EAP course and achieve a score of 56-65% OR
- Successful completion of Level 5 UFO English program with no more than two macro-skills at Level 4.
- Students must achieve attendance above 90%. Participation A.



CRICOS Code: 03068M

Students with successful completion of 12 weeks EAP course may enter JMC Diplomas or Bachelors courses after completion of EAP with a result of 66% and above, and JMC Masters courses after completion of EAP with a results of 75% and above.



CRICOS Code: 00771A

For courses normally requiring IELTS 5.5, Kenvale accepts:

- EAP course - pass of 60% or higher
- Pass on Cambridge First Certificate in English (FCE)



CRICOS Code: 00899G

Macleay College agrees to accept Langports students as meeting the English language competency entry requirements who have successfully completed the following courses:

- **Completion of EAP** with Distinction Grade (75% - 84%) OR Cambridge FCE Grade A (6.5 IELTS equivalent) for Diploma of Journalism and Bachelor of Journalism
 - **Completion of EAP** with Credit Grade (65% - 74%) OR Cambridge FCE Grade B (6.0 IELTS equivalent) for all other courses (Business, Advertising, Marketing)
- AND**
- who have a supporting letter of recommendation from the Langports Director of Studies stating that their English level is equivalent to IELTS 6.0 or 6.5 depending on the course they are applying for.



Le Cordon Bleu Australia will accept students who have achieved the following equivalencies: For programs with IELTS 5.5, no band below 5.0 or equivalent: Langports EAP exit score - 60% - 64% Pass

For programs with IELTS 6.0, no band below 5.5 or equivalent: Langports EAP exit score - 65% - 74% Credit

Langports Language College will provide a certificate and written referral letter stating the students level of English and that he/she meets the requirements for Le Cordon Bleu Australia's program.

Langports' Pathways



Students with successful completion of 12 weeks EAP course may enter New York Film Academy courses after completion of EAP with an exit result of Advanced English equivalent to IELTS 5.5 or higher.

CRICOS Code: 03366A



For courses normally requiring IELTS 5.5, SERO INSTITUTE accepts:

- 60% or higher on Langports EAP course
- Pass on Cambridge First (FCE)
- Completion of Level 5 on Langports UFO English program



Pathways to the six Regions of TAFE Queensland (TAFE QUEENSLAND Brisbane, SkillsTech, Gold Coast, South West, East Coast and North)

Students may enter any programs except Nursing upon successful completion of the following courses with results required to achieve IELTS equivalency:

- For IELTS 5.5 equivalence (with no band less than 5.0): EAP (56% - 65%) duration 12 weeks or FCE grade C (160-173) duration 10 or 12 weeks or IELTS 10 weeks course with exit level equivalent to IELTS 5.5
- For IELTS 6.0 equivalence (with no band less than 5.5): EAP (66% - 70%) duration 12 weeks or FCE grade B (174-180) duration 10 or 12 weeks or IELTS 10 weeks course with exit level equivalent to IELTS 6.0

The direct entry pathway is valid only 3 months from the date the student completes Langports' program.

Nursing Program: Students MUST take an IELTS test

TAFE Queensland can issue packaged offers, CONDITIONAL upon the following:

- IELTS 7.0 (no individual score lower than 7.0) - for intakes after July 2018

Package for COE Deposit STRUCTURE**

Langports Program of 12+ weeks	TAFE QLD 1st Formal Program	TAFE QLD 2nd Formal Program	TAFE QLD 3rd Formal Program	TAFE QLD 4th Formal Program
Full payment (12 – 25 weeks)	50% 1st Semester Payment date - when you want to get the COE	10% 1st Semester Payment date - when you want to get the COE	10% 1st Semester Payment date - when you want to get the COE	10% 1st Semester Payment date - when you want to get the COE
26+ weeks = 50% deposit (as per TPS)	50% balance due: 10 January or 10 June (depending on the intake)	90% balance due: 10 January or 10 June before the 2nd program (depending on the intake)	90% balance due: 10 January or 10 June before the 3rd program (depending on the intake)	90% balance due: 10 January or 10 June before the 4th program (depending on the intake)

2nd, 3rd or 4th semesters are payable on the 10 January or 10 June before the semesters commence.

**Deposit structure is subject to change. TAFE conditions apply.



Students may enter any programs upon successful completion of the EAP course with results required to achieve IELTS equivalency:

- EAP pass of 75% - 84% - Distinction - Students scoring in this range have English skills suitable for entry to courses that normally require IELTS 6.5
- EAP pass of 65% - 74% - Credit - Students scoring in this range have English skills suitable for entry to courses that normally require IELTS 6
- EAP pass of 60% - 64% - Pass - Students scoring in this range have English skills suitable for entry to courses that normally require IELTS 5.5

CRICOS Code: 00591E



Langports' Pathways

THINK: EDUCATION GROUP

CRICOS Code: 00246M

Pathways to Brisbane and Gold Coast campuses:

- Langports students with successful completion of 12 week EAP course with results to achieve IELTS 5.5 Academic equivalency (with no band less than 5.0) will satisfy the IELTS 5.5 Academic overall English requirement
- Langports students with successful completion of 12 week EAP course with results to achieve IELTS 6.0 Academic equivalency (with no band less than 5.5) will satisfy the IELTS 6.0 Academic overall English requirement.

Think Education Language Centre officially recognise Langports Sydney campus students, who will be deemed to have met Think Education English Language requirements under the following conditions:

Sydney Campus:

- Students that have successfully completed the Langports UFO English Intermediate level (4) will be eligible for entry into the Direct Entry Programs offered by Think Education Language Centre that require an equivalent to IELTS 5.0 Academic.
- Students that have successfully completed the Langports UFO English Upper Intermediate level (5) will be eligible for entry into the Direct Entry Programs offered by Think Education Language Centre that require an equivalent to IELTS 5.5 Academic.
- Students that have successfully completed the Langports EAP course with a pass of 60% - 64% will be eligible for entry into the Direct Entry Programs offered by Think Education Language Centre that require an equivalent to IELTS 5.5 Academic.



Torrens University will accept the following courses at Langports (Brisbane, Gold Coast or Sydney) to satisfy the English entry requirements:

English for Academic Purposes (EAP)

CRICOS Code: 03389E

- EAP pass of 85% - 100% - High Distinction - Students scoring in this range have English skills suitable for entry to courses that normally require IELTS 7
- EAP pass of 75% - 84% - Distinction - Students scoring in this range have English skills suitable for entry to courses that normally require IELTS 6.5
- EAP pass of 65% - 74% - Credit - Students scoring in this range have English skills suitable for entry to courses that normally require IELTS 6
- EAP pass of 60% - 64% - Pass - Students scoring in this range have English skills suitable for entry to courses that normally require IELTS 5.5

The University of the Sunshine Coast will agree to the following:



CRICOS Code: 01595D

- Students who have completed EAP at Langports with minimum 65% are suitable for entry into most of the University of the Sunshine Coast's undergraduate programs (Exceptions include Education and Nursing programs)
- Students who have completed EAP at Langports with minimum 75% are suitable for entry into most of the University of the Sunshine Coast's postgraduate programs (Exceptions include Education and some Health programs)

USC will only issue the Confirmation of Enrolment (COE) once the student has met the conditions of their offer (including English level), and accepted and made payment toward an unconditional offer.



UNIVERSITY OF WOLLONGONG AUSTRALIA

CRICOS Code: 00102E

Students may enter any programs upon successful completion of the EAP course or Cambridge Advanced course with results required to achieve IELTS equivalency:

- 185 in Cambridge Advanced - 85% in Langports' EAP= Academic IELTS 7.0 equivalence
- 176 in Cambridge Advanced - 75% in Langports' EAP= Academic IELTS 6.5 equivalence
- 169 in Cambridge Advanced - 65% in Langports' EAP= Academic IELTS 6.0 equivalence
- 162 in Cambridge Advanced - 60% in Langports' EAP= Academic IELTS 5.5 equivalence



CRICOS Code: 01505M

Students may enter any programs upon successful completion of the EAP course with results required to achieve IELTS equivalency:

- EAP pass of 65% - 74% - Credit - Students scoring in this range have English skills suitable for entry to courses that normally require IELTS 6
- EAP pass of 60% - 64% - Pass - Students scoring in this range have English skills suitable for entry to courses that normally require IELTS 5.5





LANGPORTS
Platinum Program

An Exclusive
Langports Experience!

Langports' Unique Platinum Program 2020

If you are interested in learning more about Australia, studying English, and meeting like-minded friends from around the world, then this is the program for you. Our Langports Platinum Program is dedicated to 40+ students and is designed to maximise your time in Australia by combining English studies, Australian culture and activities. From day one, you will feel part of an amazing experience, one that you will never forget!

About the Platinum Program 2020

This high quality program, combined with activities, has been specifically designed for mature students who wish to experience studying English whilst spending time discovering Australia and learning more about the country's culture!

About the Program

- Length of course - 1, 2, 3 or 4 weeks
- At Langports Brisbane school
- Minimum age 40 years old
- Recommended level - A2/B1 - Pre-Intermediate to Intermediate**, taking a pre-test is recommended
- Guaranteed to run
- Maximum 10 students per class

* Prices are subject to change

** Clients with a lower or higher level will be offered the option to join our UFO English program in the mornings and meet other 40+ students for afternoon & weekend activities.

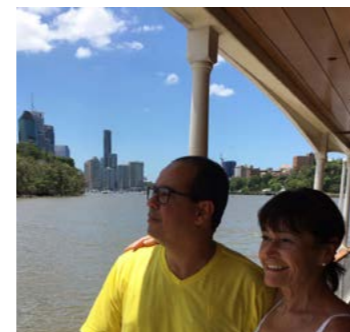
Next Starting Dates & Prices

The next Platinum Program starting dates are:

Length of program	1 week	2 weeks	3 weeks	4 weeks
Intakes	TBC	TBC	TBC	TBC
Price	TBC	TBC	TBC	TBC

Program Content

- 15 hours of English** per week, from Monday to Friday from 9.00am to 12.25pm
- Subjects covered may include** - Australian Culture and History, Aboriginal Culture, Travelling in Australia, Australian Sports, Australian Wine, Australian Music & Movies, Australia's unique wildlife.
- Activities** - 3 afternoon excursions, 1 lunch and 1 full-day excursion on Saturday, with your dedicated Platinum Program co-ordinator.



Why Langports?

International Reputation

- Langports staff are extremely experienced. Over the past 13 years, Langports has taught over 30,000 students from more than 76 different nationalities
- Langports' courses are well organised and professionally managed
- Langports' staff continuously provide a high standard of education and student services
- Langports is a family-run business and it cares for its students!
- For 5 years, students from all over the world have recognised Langports as the "Best Language School in Australia". Langports was also awarded the "Certificate of Excellence" in 2017 (on Educationstars.com)
- Finally, Langports has been shortlisted for the ST Awards (Study Travel Awards) as the "ST Star English Language School Southern Hemisphere" for 4 years in a row

Facilities

Langports' Brisbane school is a 3 level, stand-alone, modern building making it one of the largest private schools in the city.

Langports has great facilities including:

- Dedicated classrooms for the Platinum Program
- Total of 24 modern classrooms all equipped with air-conditioning
- 3 spacious lounge areas with computers, table tennis, table football & wide screen TV
- 'Langports Lane' – outdoor courtyard used for break-times, BBQs and functions
- A library with books, DVDs and magazines for students to borrow
- Free internet access for all students, with wireless connection available throughout the campus
- Large student common room with kitchen containing microwaves, large refrigerators and vending machines

Why Brisbane?

City

With 300 days of sunshine per year, Brisbane, capital of "The Sunshine State", is often referred to as Australia's most liveable city. It is a safe, friendly and clean city where international students are welcomed.

About 1 hour drive from Brisbane, you will find great places to visit such as the Rainforest, the Sunshine Coast, the Gold Coast and some of the biggest and most beautiful sand islands in the world!

School Location

Langports is located in the heart of Brisbane city next to Roma Street Station.

The school is only a 10 minute walk to the popular shopping district and is surrounded by shops & cafes but is also close to parks such as Roma Street Parklands and the Botanical Gardens.

South Bank, Brisbane's well-known entertainment precinct where you will find a great range of cafes as well as a large pool and artificial beach, is only a 20 minute walk from our school.



Platinum Program Sample Timetable

Week 1

Monday 6th January 2020 to Sunday 12th January 2020*

	Monday	Tuesday	Wednesday	Thursday	Friday	Saturday	Sunday
Classes From 9am to 12.25pm	3hrs Class Orientation and level testing & classes	3hrs Class	3hrs Class	3hrs Class	3hrs Class	Departure will be around 8am	FREE DAY OR Optional Trip (at extra cost - see page 7)
Lunch 12.25pm to 1.25pm	Lunch	Lunch	Lunch	Lunch	Lunch		
Afternoon** activities The price does not include lunches from Monday to Thursday (unless indicated otherwise) nor public transportation costs to and from school.	Walking Tour of Brisbane + afternoon drinks Discover your home for the next weeks with your dedicated Platinum Program coordinator!	Lone Pine Koala Sanctuary We will spend the afternoon at the Lone Pine Koala Sanctuary. Only 12km from Brisbane City, it is the world's first and largest koala sanctuary with over 130 koalas.	Free Afternoon	Lunch in Southbank	Boomerang Painting Spend the afternoon brushing up your artistic skills and discovering the art of boomerang painting	Day Trip to Surfers Paradise Return will be around 6pm	

* This program is a guide and is subject to change depending on weather and booking availability.
** Afternoon activity times and duration can vary but will be organised between 12.25pm and 5pm at the latest.



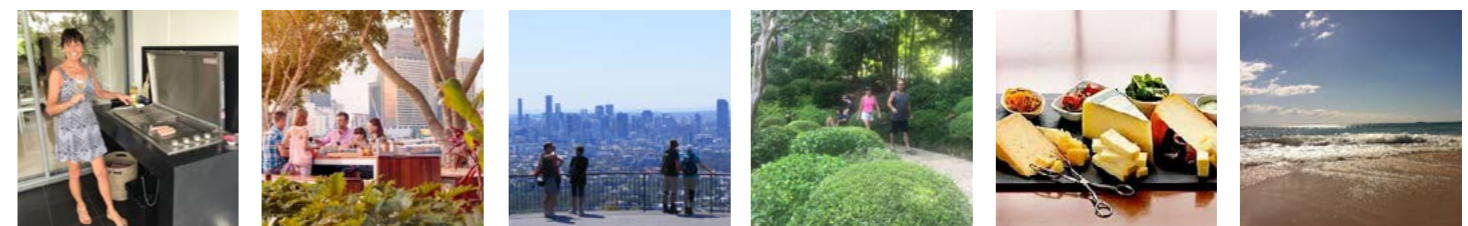
Platinum Program Sample Timetable

Week 3

Monday 20th January 2020 to Sunday 26th January 2020*

	Monday	Tuesday	Wednesday	Thursday	Friday	Saturday	Sunday
Classes From 9am to 12.25pm	3hrs Class Orientation and level testing & classes	3hrs Class	3hrs Class	3hrs Class	3hrs Class	Day trip to the Rainforest	FREE DAY OR Optional Trip (at extra cost - see page 7)
Lunch 12.25pm to 1.25pm	Cooking Class/BBQ	Lunch	Lunch	Lunch	Lunch		
Afternoon** activities The price does not include lunches from Monday to Thursday (unless indicated otherwise) nor public transportation costs to and from school.	Join Susie, your program coordinator to discover Australian cuisine, have a cooking class, learn new English vocabulary and practice your English conversation skills	Visit to the coastal community or Redcliffe	Free Afternoon	Botanic Gardens and Mt Cootha Lookout Visit the beautiful Botanic Gardens and enjoy the best views of Brisbane city whilst having a coffee with your classmates and practising your English conversation skills!	Victoria Park Putt Putt We will spend the afternoon playing golf and having some fun. Victoria Park is only a short distance from the CBD and offers a great environment to practice your putting skills.		

* This program is a guide and is subject to change depending on weather and booking availability.
** Afternoon activity times and duration can vary but will be organised between 12.25pm and 5pm at the latest.

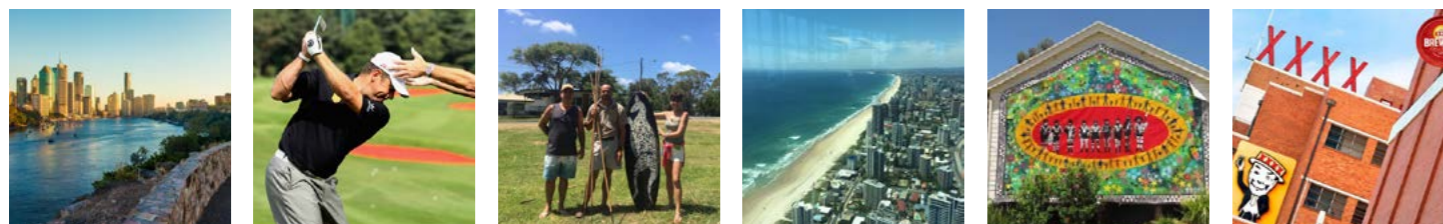


Week 2

Monday 13th January 2020 to Sunday 19th January 2020*

	Monday	Tuesday	Wednesday	Thursday	Friday	Saturday	Sunday
Classes From 9am to 12.25pm	3hrs Class	Volunteering + afternoon at the beach	3hrs Class	3hrs Class	3hrs Class	Stradbroke Island Aboriginal Discovery Eco Trip	FREE DAY OR Optional Trip (at extra cost - see page 7)
Lunch 12.25pm to 1.25pm	Lunch		Lunch	Lunch	Lunch with your Teacher		
Afternoon** activities The price does not include lunches from Monday to Thursday (unless indicated otherwise) nor public transportation costs to and from school.	Free Afternoon		Free Afternoon	XXXX Brewery Tour XXXX is Queensland's most famous beer! Take a tour through one of Brisbane's greatest attractions in a remarkable exploration of the world of XXXX		Join Susie, your program coordinator on this one in a life time day trip to Stradbroke Island. We will have lunch and do an Aboriginal Discovery Guided walk then spend the afternoon at the beach	

* This program is a guide and is subject to change depending on weather and booking availability.
** Afternoon activity times and duration can vary but will be organised between 12.25pm and 5pm at the latest.

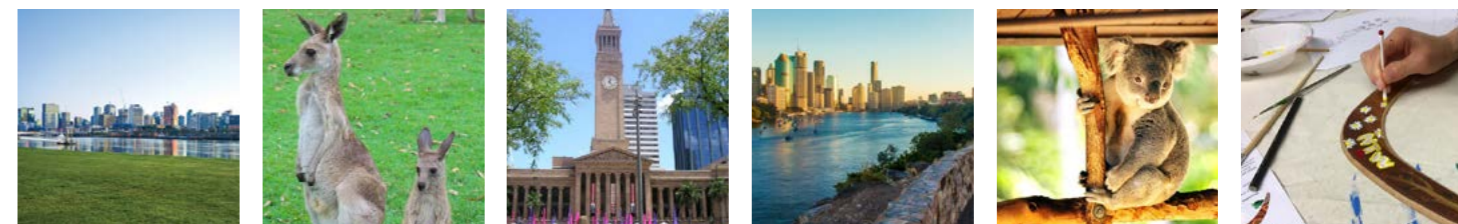


Week 4

Monday 27th January 2020 to Sunday 2nd February 2020*

	Monday	Tuesday	Wednesday	Thursday	Friday	Saturday	Sunday
Classes From 9am to 12.25pm	Public Holiday	3hrs Class	3hrs Class	3hrs Class	3hrs Class	Departure will be around 8am	FREE DAY OR Optional Trip (at extra cost - see page 7)
Lunch 12.25pm to 1.25pm	FREE DAY OR Optional Trip (at extra cost - see page 7)	Visit of Coochi Mudlo Island We will take the ferry and spend the afternoon on Coochiemudlo Island and discover this small island 30kms from Brisbane.	Lunch	Lunch	Lunch		
Afternoon** activities The price does not include lunches from Monday to Thursday (unless indicated otherwise) nor public transportation costs to and from school.		Free Afternoon	Free Afternoon	Bowling	Free Afternoon From 5.30pm Eat Street Markets	Noosa Day Trip Eumundi Markets & Beach Return will be around 6pm	

* This program is a guide and is subject to change depending on weather and booking availability.
** Afternoon activity times and duration can vary but will be organised between 12.25pm and 5pm at the latest.



Platinum Program Coordinator

Susie France - Bachelor of Education (Honours)



Susie France is the co-ordinator of The Langports Foundation and part-time study tour teacher. She comes to this role with a background of primary school teaching and education administrator at Langports.

Susie is the wife of the Langports founder, John France and the proud mother of three grown children. Her hobbies are reading, volunteering, travelling and playing golf.



Extra Services (organised separately upon request)

Optional Trips and Activities

Extra activities can also be available upon request, at an extra cost:

- ☀ Day trip to Springbrook National Park – from \$120*
- ☀ Day trip to Moreton Island (Sundays) – from \$150*
- ☀ Private Golf Lesson (afternoons or Sundays) from \$130* (1 hour) or practise on the driving range from \$20*
- ☀ Tennis Lesson (evenings) – from \$25*
- ☀ Other activities can be sourced according to personal preferences



Accommodation and Airport Pickup

4 high quality options to choose from

Langports offers you a great choice of high quality accommodation options in a safe and relaxed environment around our Brisbane school. Depending on your preferences and objectives, choose from our Homestay Family or Deluxe Family options or professionally managed Student Apartments. We charge a \$255* placement fee to organise your accommodation.

- ☀ **Deluxe homestay** – you will get a private bedroom and private bathroom. There is only one student per family. There will be interaction with the family over meal times and you will be included like part of the family. Breakfast and dinner are provided from Monday to Friday. Breakfast, lunch and dinner are provided on Saturday & Sunday. Arrival possible on Saturday or Sunday before the course starts. From AU \$315 per week*. Distance to school is from 30 - 50 minutes by public transport.
- ☀ **Family homestay** – you will get a private bedroom and share a bathroom. There could be 1 or 2 students per family. There will be interaction with the family over meal times and you will be included like part of the family. Breakfast and dinner are provided from Monday to Friday. Breakfast, lunch and dinner are provided on Saturday & Sunday. Arrival possible on Saturday or Sunday before the course starts. From AU \$280 per week*. Distance to school is from 30 - 50 minutes by public transport.
- ☀ **Professionally managed Studio Apartment** – you will get your fully-furnished private studio including a shower, ensuite bathroom, a kitchen (stone benchtop, cooktop, microwave, fridge, kettle, toaster, coffee machine, cookery and crockery), unlimited Internet and air-conditioning. A bedding pack & bathroom pack are also included. The studio apartment is cleaned every week by professional cleaners. From AU\$550 per week*. The studios are located 12-15 minutes' walk to school.
- ☀ **Hotel** – Recommendations for hotel accommodation can be provided upon request.

Airport transfers

- ☀ Pick-up on arrival and/or drop-off on departure can be organised from BNE airport upon request from \$125 each way.

*Extra activities and accommodation prices will depend on booking dates and availability and are subject to changes.



Live, Love, Learn!
CRICOS Code BNE 02630J

LANGPORTS
www.langports.com | platinum.langports.com



LANGPORTS English Exams Centre

Langports English Exams Centre (LEEC) is now the largest Exams Centre in Queensland. We are a dedicated exams centre offering some of the world's most widely recognised English language proficiency examinations. We are an authorised open centre for professional or academic purposes such as Cambridge ESOL examinations. We also are a public and institutional testing centre for TOEIC. We offer exams in Brisbane, on the Gold Coast and in Sydney and students can sit their exams at the school of their choice. We offer a variety of exams to help meet their needs such as English.

Why choose Langports English Exams Centre?

- ✿ We aim to offer students the highest quality of exam administration and delivery, making each student's exam journey the best one possible!
- ✿ We offer exams in Brisbane, on the Gold Coast and in Sydney.
- ✿ We offer a wide range of exams:
 - TOEIC Listening & Reading
 - Cambridge: PET, FCE, CAE, CPE

Langports English Language College offers courses to assist students with preparation for these exams.

You can find the exam dates on Langports English Exams Centre website. Usually, Cambridge exams are held during the week following the end of the Cambridge course. TOEIC exams are held once a month, on Fridays.



 UNIVERSITY of CAMBRIDGE
ESOL Examinations
Authorised Centre



www.langportenglishexams.com



LANGPORTS ENGLISH STUDY TOURS PROVIDES STUDENTS WITH OPPORTUNITIES TO EXPAND THEIR UNDERSTANDING OF THEMSELVES AND THE EVER CHANGING WORLD THAT THEY LIVE IN.

BENEFITS TO STUDENTS

- Dedicated ESL lessons
- Experienced staff
- Vetted homestay families
- International school environment
- Use Langports facilities
- Homestay and Student Residence accommodation options



BENEFIT TO AGENTS

- Family business
- Deal directly with the decision maker
- Over 30 years collective experience
- Safety is our #1 priority
- Programs can be customised to clients' needs

LANGPORTS ENGLISH STUDY TOURS SUPPORTS ITS PARTNERS BY PROVIDING HIGH QUALITY, LOW RISK PROGRAMS THAT CATER TO A WIDE VARIETY OF DESIRED OUTCOMES.



WHY LANGPORTS ENGLISH STUDY TOURS?

PROGRAM HIGHLIGHTS

INFORMATIVE CLASSES
Langports teaching methods ensure that students get the most out of their short time at Langports. Classes are interesting and fun!

HIGH QUALITY TEACHERS AND STAFF
Highly experienced staff and teachers working on the Group Study Tour program to ensure the safety and comfort of students..

HOMESTAY PLACEMENTS
High level of care and attention in Langports homestay families. Single or Double placements available. Close to school.

INTERESTING ACTIVITIES
Langports has a large range of activities to choose from., ranging from cultural, sporting, educational, adventure and social activities.



GROUP PROGRAM

- To qualify for this package, group size must be a minimum of 10 students
- Group must be accompanied by a group leader (1 FOC per 15 students)
- All fees quoted are NETT

Email Groups Director Jake France on jcf@langports.com for more information

2 week program starting from 1,793.00* per person

*price will vary depending on location and program inclusions

WEEK 1				
DAY	DATE	MORNING 9.00 am- 12.25pm	AFTERNOON 1.25 pm- 4.30pm	
1	SAT	ARRIVAL: Homestay families to pick-up from meeting point		
2	SUN	Free Day with Homestay Families		
3	MON	First Day Testing and Orientation	City Walking Tour	
4	TUE	English Lessons	Lone Pine Koala Sanctuary	
5	WED	English Lessons	Queensland Museum and GOMA	
6	THU	English Lessons	Aussie Sports	
7	FRI	English Lessons	Boomerang Painting	

WEEK 2				
DAY	DATE	MORNING 9.00 am- 12.25pm	AFTERNOON 1.25 pm- 4.30pm	
8	SAT	Theme Park Visit		
9	SUN	Free Day with Homestay Families		
10	MON	First Day Testing and Orientation	City Cat Ride	
11	TUE	English Lessons	Science Centre	
12	WED	English Lessons	Southbank Swimming	
13	THU	English Lessons	Ten Pin Bowling	
14	FRI	English Lessons	Graduation ceremony & farewell BBQ	
15	SAT	DEPARTURE: Homestay families to drop-off at meeting point		

WHAT DO WE NEED TO PROVIDE YOU A QUOTE?

- Which campus are you interested in attending? Brisbane, Gold Coast or Sydney?
- How many students will be in the group?
- How many group leaders will be accompanying the group?
- How old will the participants of this study tour be?
- Would you like homestay accommodation and activities included in the program?
- Will the group require daily transport to and from Langports?
- Are there any particular activities that you would like included?
- Will you be working with an education or travel agent to make the arrangements?
- When and how long would you like to study?



CRICOS Code: 026 30J www.langports.com

LANGPORTS
English Study Tours

Checklist - Enrolments

- Langports Enrolment Form completed
- Passport copy
- OSHC Overseas Students Health Insurance (only applies for student visa)
- Langports pre-test for long term students (for 30+week bookings)
- Langports pre-test for Cambridge Flexi (PET, FCE, CAE)
- Langports pre-test for Closed Courses
 - IELTS
 - TOEIC
 - Cambridge FCE
 - Cambridge CAE
 - Cambridge CPE
 - EAP
- Specific application form for demi-pair, internship or volunteering program. See pages 57 & 58
- For under 18 students
 - Parental consent form if on a tourist visa in non-Langports accommodation
 - Declaration of permission (guardianship) for students visas or tourist visa in Langports Homestay

Policies and Procedures - Enrolments

Standard English course enrolments

1. The student chooses the course they would like to study and decides when they want to start their course. Students wishing to study more than 30 weeks are recommended to take the Langports long-term diagnostic pre-test (see frequently asked questions on page 60). Students considering a Cambridge Flexi course or a closed course must also complete the relevant pre-test (FCE, CAE, EAP & IELTS or TOEIC & Business), all students will be asked to sit another pre-test on the first day of classes to re-confirm their level.
2. Complete the Enrolment Form. Please don't forget to ask the student to sign it. We cannot accept an application for enrolment if they do not sign it
3. Send the signed enrolment form to the relevant Enrolments Officer with a copy of the passport
4. When we receive the enrolment, we will send a Letter of Offer, Enrolment Acceptance and Invoice for payment
5. Please forward the fees and ask the student to sign the Enrolment Acceptance letter and send it back to us
6. Langports will then send the appropriate confirmation documents (including the eCoE if the student is applying for a student visa)
7. Other documents including homestay details will be sent out approximately 3 weeks prior to the student's arrival



Frequently Asked Questions - Courses and Exams

What is the Cambridge retreat? Is it compulsory?

The Cambridge retreat is a 1 day activity, organised on the first or second week of the Cambridge course. It is a "team building" day designed for students to get to know each other, as they are going to spend 3 months together studying towards the same goal, taking a Cambridge examination. On this day a staff member takes the students kayaking, rock climbing or surfing. Attendance is compulsory for all students enrolled in a closed Cambridge course as they need to get to know one another to choose the correct partner for the speaking component of the exam.

Can students start a closed course a week or two after the official starting date?

Our closed courses are built on curriculums that deliver important information and knowledge from Week 1. If students cannot make it on time for the closed IELTS or TOEIC course, we recommend that they start with UFO English and enrol into the next closed course, as they start every 5 weeks. If students cannot make it on time for the closed Cambridge course, we recommend that they start with or study Cambridge Flexi, which starts every Monday.

Can students study part-time under a student visa?

Students on a student visa need to study at least for 20 hours per week to be able to get a student visa. Langports part-time program is 15 hours per week, therefore students coming on a student visa are not eligible and need to study full-time.

Do we offer evening courses?

No, all our courses (except Cambridge closed classes) follow the same timetable:

- First morning class from 9.00am to 11.05am
- Second morning class from 11.25am to 12.25pm
- Afternoon class from 1.25pm to 2.40pm (from Monday to Thursday only)
- Optional Workshops are from 2.50pm to 3.35pm (from Monday to Thursday only)
- Friday classes finish at 12.25pm for the weekly graduation ceremony

Cambridge closed classes follow this timetable

- First morning class from 9.00am to 11.05am
- Second morning class from 11.25am to 12.25pm
- Afternoon class from 1.25pm to 3.35pm (from Monday to Thursday only)
- Friday classes finish at 12.25pm for the weekly graduation ceremony

Do you have an online pre-test that students can take?

At Langports, all our pre-tests are paper-based. They must be completed in 1h30 maximum, under exam conditions (no help from a dictionary, computer, phone or friend), and all answers must be handwritten to ensure results' accuracy.

My student completed an IELTS/Cambridge test 2 years ago – can you accept them directly into your IELTS/Cambridge course?

Students booking courses that require an existing minimum level of English must complete a pre-test prior to having their enrolment confirmed, or provide proof of their level of English based on a publicly benchmarked test such as IELTS, TOEFL, TOEIC, Cambridge or Pearson. If a student has passed the following exams within 12 months of their preferred starting date, they are automatically allowed entry to the following courses:

FCE Pass – eligible to study CAE

CAE Pass – eligible to study CPE

If the student's Cambridge exam certificate is older than 12 months, then we will ask them to complete a pre-test.

As far as IELTS is concerned, the entry in the course will also depend on the score students received when sitting the exam last, and the goal they would like to reach.



Frequently Asked Questions - Courses and Exams

When are the Cambridge, TOEIC and IELTS exams held?

Students can take the Cambridge and TOEIC exam at Langports. You can find the exam dates on Langports English Exams Centre website: www.langportenglishexams.com/datesfees

- Usually, Cambridge exams are held during the week following the end of the Cambridge course. They are compulsory for all students enrolled in a Cambridge Closed Course.
- TOEIC exams are held once a month, on Fridays. They are not compulsory and students interested must let us know at time of enrolment.
- There are 5 IELTS examination centres in Brisbane, 1 on the Gold Coast and 9 in Sydney. IELTS exam dates can be found on the IELTS Australia website: www.ielts.org
Usually, IELTS academic tests are held every 2 weeks, on Saturdays. If you are unsure about any information, please feel free to contact your Regional Marketing Manager.

Where can I find the pre-tests?

Langports has different pre-tests, adapted for different courses (pre-test for TOEIC+, Cambridge FCE, CAE & CPE, IELTS and EAP, pre-test for long-term studies, pre-test for Internships etc.) You can download the pre-tests from the agent section of our website. Please feel free to email your Regional Marketing Manager if you are not sure about which pre-test you should be using.

Can students change levels in UFO English?

Yes. Usually students take approximately 10-12 weeks to complete a level. However, in the UFO English program, students' progress is reviewed weekly. Their USE teacher is responsible for their assessment and this happens every week. Depending on the result, the USE teacher will determine if the students can change their UFO English level or not.

Are the pre-tests compulsory to enter closed courses?

Yes, students wanting to enter a closed course need to take a Langports pre-test, even if students already took an exam (the exam might be outdated) or studied at another school (other schools might organise their levels differently).

Please also note that it is recommended for long-term students (30+ weeks bookings) to take a diagnostic test so that we can be sure that the study plan they choose is suitable for them. For students who are considered elementary or pre-intermediate by themselves with the agent's confirmation, then no pre-test necessary as we should be able to accommodate them for a long enrolment. In this case, no refund will be made if students reach the highest level. However, for students who are Intermediate and above a pre-test is required. This is to ensure we are not over-selling and can deliver what we promise the student.

All closed course pre-test must be done in 1h 30min maximum and all answers must be handwritten to ensure results' accuracy.



Frequently Asked Questions - Courses and Exams

What is the TPS? Please read page 111 for more information

TPS stands for Tuition Protection Service. The Australian government implemented the TPS in July 2012 and reviewed it in 2015. Since then bookings 26 weeks or longer have to be treated in a certain way.

Providers will not be allowed to collect more than 50% of the tuition fees in advance on courses of 26 weeks or more. Which means that if a student books 30 weeks on the same course, we can only collect 15 weeks' worth of fees to start and a further 15 weeks' fees once the student has started. Of course this is going to create extra accounting work and extra bank charges for us and our agents. So Langports suggests that you approach long term bookings (26 weeks or more) in a slightly different way in the future.

As Langports has always offered its longer term students the opportunity to have an individual Langports Study Plan which usually includes a combination of courses, it is unusual for a student to actually stay on the same course for their total enrolment. Our academic staff continuously counsel students to go to courses appropriate to their levels and their desired outcomes. In light of these legislation changes we are suggesting that agents enrol their student on a combination of courses that can total more than 25 weeks but, with no individual course more than 25 weeks. Langports can then issue separate eCOEs for each course and our agents can collect the fees for the TOTAL study program, therefore avoiding the extra administration and the extra costs.

The combination of courses will depend on your student's level of English. However, we can provide you with some examples to discuss with potential students. It is also important to assure your students that when they are at Langports, they will be able to change or cancel their course without any extra charges.

However, if you or your student wishes to book 26+ weeks on the same course, we are happy to accept this according to the legislation and payment requirements. Please note the second instalment is due in week 8 of the students' program.

What is the length of each lesson?

The morning classes last for 2 hours with 5 min break, the mid-morning class last for 1 hour and afternoon classes last for 1 hour and 15 min. Then our students have Language Workshops which last for 45 min.





LANGPORTS

Community Engagement
& Work Opportunities

Langports Work Assist

Work Assist is a FREE service designed by Langports to help students on a Student Visa or Working Holiday Visa to find paid work in Australia. To help subsidise their stay, students on a Student Visa can work up to 40 hours per fortnight during their studies (and unlimited hours during study breaks). Working Holiday Visa holders are allowed to work with no limit.

English for Work in Australia

As part of our Language Workshops, students can study a 5 week course that prepares them to find work. The program consists of;

- ✿ Writing a resume
- ✿ Writing a cover letter
- ✿ Preparing for an interview, techniques and practice
- ✿ Applying for a Tax File Number
- ✿ Opening a bank account
- ✿ Vocabulary for retail and hospitality work
- ✿ Help with RSA, RSG, HYG and White Card

At the completion of the course students will be awarded a Langports Certificate of Employment Suitability, which they can present with their job application.

Jobs Notice Board

Langports provides leads and information on available work opportunities. This includes:

- ✿ Job search websites
- ✿ Jobs Notice Board
- ✿ Advertisements from prospective employers
- ✿ Leads to companies looking for employees



Langports English + Demi-pair Program

Langports' demi-pair program is designed for students who wish to improve their English whilst discovering a new culture and experiencing life in an Australian family as a part-time au-pair.



General information:

- ✿ Minimum 12 week study program
- ✿ Full-time and part-time study options
- ✿ Demi-pair students receive accommodation and 3 meals per day in exchange for working 15 hours per week in the family (50% housework and 50% childcare)
- ✿ Minimum English level: pre-intermediate
- ✿ The demi-pair placement also includes:
 - Airport pick-up
 - Demi-pair insurance
 - Additional placements in families for demi-pair positions for the remainder of the course or visa (subject to successful first placement & visa validity)
- ✿ Lead time: 8 weeks minimum

Placement fees 2020

BNE, GC & SYD	\$950
---------------	-------



- ✿ Available to females & males
- ✿ 12 week placement can be combine with all courses except for Cambridge CPE
- ✿ Tasks include 50% housework and 50% childcare



Lorene Castagnetti
France
16 weeks at Langports
Brisbane campus



I chose to study English because, nowadays, in France and everywhere in the world, English is so important to find a job or just for to help you communicating with people while traveling. I decided to be a demi pair student because I was interested to see the real Australian life and of course to improve my English while being with the children! As a demi-pair student, I took care of the big house in which I was living and I did various house duties. I also played with the little girl of the family. I really enjoyed living in an Australian family, learning about a new culture and a new way of life. For example, my family always woke up very

“ I think my most memorable experience is the fact that I met 200 people of different nationalities, discovered a new culture and a new way of life. What I liked the most is that now I have a much more open mind to the life and the world! ”

early to do some sports. In France, I think, we are more stressed and we don't have such a relaxing lifestyle. I'm extremely satisfied with my Langports experience. These 5 months that I spent in Australia were the best of in my life. First, I improved my English a lot and it's so good for my future. I can say that I "fall in love with Australia" and the way of life. I will come back in 2 or 3 years to continue my study and may be work there.



Langports offers 2 types of unpaid internships:

Work Experience Program | Professional Placements

Langports' English + Internship program has been specifically designed to help students:

- ✿ increase the value of their English classes by using their new English skills in a workplace environment
- ✿ develop their employment skills
- ✿ learn the cultural norms of an Australian business
- ✿ become more confident with their English and professional skills
- ✿ differentiate themselves in the job market
- ✿ obtain relevant career experience to benefit their career in Australia or at home
- ✿ and potentially obtain a work reference from an Australian company.



Who is this program for?

This program is ideal for students:

- ✿ Whose first goal is to practise their English in a professional environment,
- ✿ Looking for a short-term unpaid placement,
- ✿ Coming to Australia on a student visa,
- ✿ Who do not have any particular qualifications or previous experience.

Enrolment conditions:

- ✿ Hold a working visa (student visa or WHV)
- ✿ For students from 18 years old
- ✿ Students must study English for a minimum of 4 weeks prior to the internship
- ✿ Students must reach an intermediate level of English to be able to start their placement
- ✿ Students must hold a personal liability insurance cover for up to AU\$ 2 million*

*Langports can organise this at an extra cost of AU\$2 per day of placement if needed.

Description

- ✿ Work experience placements are full-time only
- ✿ All placements are unpaid
- ✿ Students can undertake their placements either:
 - ✿ after completion of their English course
 - for 4 weeks on a student visa
 - for 4 to 12 weeks on a WHV
 - ✿ in between a break between 2 courses
 - for 4 to 6 weeks on a student visa
 - for 4 to 12 weeks on a WHV
- ✿ Students must register at least 10 weeks prior to their preferred internship starting date
- ✿ Students can start at any time, except in December and for the 2 first weeks of January

Placement prices are: based on the work experience placement length.

Brisbane, Gold Coast and Sydney

4 week or 6 week internship \$720
8 week or 12 week internship \$800

Internship Areas	Length available (weeks)	Experience (relevant qualifications or education required)	Preferred location
Tourism & Hospitality	4/6/8/12	No	Brisbane, Gold Coast, Sydney
General Administration	4/6/8/12	No	Brisbane, Gold Coast, Sydney
Marketing & Communications	8/12	Yes	Brisbane, Sydney
Finance	8/12	Yes	Brisbane, Sydney
Event Management	8/12	Yes	Brisbane, Sydney
Graphic/Web Design	8/12	Yes	Brisbane, Sydney
Human Resources	8/12	Yes	Brisbane, Sydney





Who is this program for?

This program is ideal for students:

- Who need to complete an internship abroad to validate a degree in their home country,
- Coming to Australia on a WHV,
- Currently studying/have studied subjects related to their preferred internship area,
- Who are available to intern for 3 months.

Enrolment conditions

- Hold a Working Holiday Visa (only)
- For students from 18 years old
- Students must study English for a minimum of 4 weeks prior to the internship
- Students must reach a high upper-intermediate level of English to be able to start their placement (equivalent to IELTS 6.5)
- Students must be currently studying a degree related to their preferred internship area (or have completed a degree in the past 2 years maximum).

Description

- Professional internship placements are part-time only (3 to 4 days per week).
- All placements are unpaid.
- Students will have some free time to find a student job to support their daily expenses if needed.
- Students can only undertake their placements after completion of their English studies.
- Placements can take up to 6 months to be completed.
- Students can start at any time, except in December and for the 2 first weeks of January.

Placement prices are based on the industry sector and range from \$1,950 to \$2,700

Internship Areas	Price	Length available	Experience (relevant qualifications or education required)	Preferred location
Advertising Accounting Education Fashion Human Resources IT Marketing Media Public Relations Sport Management	\$1950	12 weeks	YES	All capital cities of Australia (Gold Coast not included)
Finance	from \$2,450 to \$2,700			
Architecture Logistics Engineering (biomedical, civil, electrical, electronics, environmental, mechanical, software)	\$2,700			

How to apply

RESUME



1. Contact us and send us:

- The student's resume, in English
- The student's motivation letter, in English
- The student's English + Internship pre-test
- The student's Langports Enrolment form
- Information about visa (Student or WHV)
- A copy of their university transcript (for the professional internship program only).

This must be done:

- For the work experience program - at least 10 weeks before your preferred internship starting date.
- For professional internship placements - 6 months before your preferred internship starting date.

2. We will organise a Skype meeting for the student with the relevant internship coordinator.

3. Should the student meet all criteria and should the interview be successful, please confirm the student's enrolment in the program and Langports will send letter of offer and invoices.

English + Work Experience Program

- Organise the student's liability insurance if needed
- Finalise the full payment of the program with Langports as per the offer letter and invoice.
- The student will receive an invitation for an interview with a potential host company (and a 2nd interview should the first one be negative). A maximum of 3 interviews will be organised.
- Finalise the student's placement, they will receive a confirmation letter.
- Complete the internship (regular follow-ups from our internship coordinator + exit evaluation)
- Student receives a Certificate of Completion of the internship.

See the English + Work Experience application form for the cancellation and refund policy.

English + Professional Placement

- Finalise the payment of the program (deposit + course) with Langports as per the offer letter and invoice.
- The student will receive an invitation for an interview with a potential host company (the search process will continue until the student is successfully placed).
- Once an interview is successful, the student finalises their payment (remaining placement fees) directly with our internship provider and confirms their placement.
- They will receive a confirmation letter.
- Complete the internship (regular follow-ups from our internship coordinator + exit evaluation)
- Student receives a Certificate of Attainment.

See the English + Professional Placement application form for the cancellation and refund policy.





At Langports, students will have many opportunities to practice their English outside of the classroom and engage with the local community. Langports is offering a great range of volunteering programs, available to all students enrolling for at least 6 weeks of studies at Langports Brisbane, Gold Coast or Sydney.

Please find more information about all the projects we offer in the pages below. All these programs are available to students on all type of visas (tourist, working holiday, student etc.) aged 18 years old or over, and students can volunteer either part-time during their studies, or full-time once they finish their course at Langports.



How to apply?

For all onshore bookings

1. Students should come and see our Recreation & Community Engagement Officer during their first week to talk about their plans and we will check availabilities for the requested option.
2. Students wishing to go ahead pay the English + volunteering program placement fee.
3. Langports will confirm their placement for the option they have chosen.
4. A certificate of completion will be delivered at the end of the program.

For all offshore bookings - minimum leading time is 12 weeks

1. Choose a volunteering project (carefully read the descriptions and conditions of each project).
2. Complete a Langports Enrolment form and pre-test, and send it to our Regional Marketing Manager along with information on your preferred project.
3. Your Regional Marketing Manager will confirm whether the student has the correct level to join the English + Volunteering program of their choice, and confirm availability for this program, or offer an alternative option if needed.

Please note that volunteering program confirmations can sometimes take up to 2 weeks. Also, some programs can only be confirmed 2 or 3 weeks before the program start date, so students are required to be as flexible as possible.

4. If needed and requested, complete the application form relevant to the chosen program (this will be sent on a case-by-case basis by your Regional Marketing Manager). Some programs will also require the student to send a resume, or more personal information such as experience, references, insurance policy details etc.
5. Langports will process the student's enrolment, and payment will then be needed to confirm the course and volunteering placement.



Get involved with the local community!

At Langports students are encouraged to become part of their local community. The English + Community volunteering program will help students gain life experience, learn new skills and knowledge, develop new interests, expand their work portfolio and make a meaningful impact on society.



Location:

Various options & locations around the cities of **Brisbane & Sydney** (30- 50 min from city centre).

All options are subject to availability.

About your English course

- Study at our Brisbane & Sydney schools ONLY
- Study for a minimum of 12 weeks
- Study full-time or part-time, depending on your visa
- Available for students from 18 years old
- Minimum English level required will depend on the project

About the volunteering options

- Various projects around BNE & SYD, students choose their preferred option
- Volunteer part-time during your course or full-time after your course
- Length: from 1 day to 12 weeks
- Starts any week
- Orientation provided on the first day
- A certificate of community service is awarded at the end of the project.

All options are subject to availability and seasonability

1. Aged Care (B & S)

> Assisting staff at an Aged Care home. This could include having conversation with residents, going for walks in the garden, organising events & activities, etc.

4. Wildlife (Lone Pine Koala Sanctuary) (B)

> Helping the rangers with maintaining a safe habitat for native animals (cleaning enclosures, monitoring visitors, assisting with food preparation and more).

2. Baseball (S)

> Volunteer with one of Australia's premier Baseball associations
> Please note that this program is seasonal and can only accept 1 student at a time

5. Conservation (Conservation volunteers) (B & S)

> Working with an environment conservation organisation on short-term rehabilitation projects (planting, fencing, cleaning and more).

3. Monika's Doggie Rescue (S)

> Assisting with feeding and nursing rescued dogs.

6. Surf Tours (S)

> Spend your weekends down by the beach volunteering at a surf camp.
> Please note that this program is seasonal and can only accept 1 student at a time

Starting dates - Every week. Placement fee - \$250

Note: Lone Pine Koala Sanctuary charges an additional \$250 payable on induction day.

What is NOT included:

- Accommodation (Langports can organise accommodation in homestay or student house upon request)
- Personal expenses
- Personal transportation to and from the volunteering location
- Visa
- Meals (students need to bring their own lunches and snacks for the day)

What is included:

- Placement as a volunteer





Experience working with Australian children!

The goal of this project is to experience working with Australian children and childcare professionals, and gain practical experience working with children aged from 6 weeks to 6 years old in an English speaking environment with professionally trained staff.

Location:

Various childcare centres around the city of **Brisbane, Queensland** (10 - 50 min from city centre). Students will be assigned a location depending on each child care centre needs & availabilities.



About your English course

- Study at our Brisbane campus ONLY
- Study for a minimum of 12 weeks
- Study full-time or part-time, depending on your visa
- Available for students from 18 years old
- Minimum English level required: intermediate
- For students on a student working holiday or tourist visa

About the volunteering

- Available in Brisbane only
- Length: from 2 to 12 weeks
- A Blue Card will be required (we will help you to apply for this during your first week in Australia as it could take up to 3 months)
- Starts every week (every Monday)
- Orientation provided on the first day



English + Child Care Volunteering

Child care centres are located all around in Brisbane (in the city centre and in each suburb). Students are unable to self-select a project location. The child care centre will be assigned depending on each centre's needs and availabilities at the requested times, and also based upon the student's accommodation location, to minimise the daily traveling time. Therefore placement will only be confirmed once the student's accommodation has been arranged. Note that all placements are subject to a successful interview.

Tasks may include:

- **welcoming the children in the morning,**
- **preparing lunches,**
- **playing with the children,**
- **supervising nap time,**
- **learning about the Australian childcare system.**

Students are usually required to work from Monday to Friday from early morning to mid-afternoons or early evenings.

Starting dates - Every Monday. Placement fee - \$250

What is included:

- Placement as a volunteer in a childcare centre

Extra requirements:

- Great interest for working with children
- References would be appreciated.
- Students need to go to an interview at the child care centre.

What is NOT included:

- Accommodation (Langports can organise accommodation in homestay or student house upon request for the time of the volunteering project)
- Personal expenses
- Personal transportation to and from the childcare
- Visa
- Meals (students need to bring their own lunches and snacks for the day)



Learn how to scuba dive, gain an understanding of the environmental issues facing the marine eco-system and use your new skills to contribute to the preservation of coral reefs on the Great Barrier Reef of Australia.



Location:

The Great Barrier Reef, Queensland.

This project departs from Cairns and the student will need to make their own way there at their own cost.

About your English course

- Study at any of our campuses
- Study for a minimum of 6 weeks
- Study full-time or part-time, depending on your visa
- Available for students from 18 years old
- Minimum English level required: intermediate (pre-test required)

About the volunteering project

- Length: 12 days
- Participants: minimum 4, maximum 8 per group
- Set starting dates
- Orientation provided on the first day
- Available to students on a tourist, student or working holiday visa

Program schedule:

Arrival Day: Arrive at Cairns Airport (CNS). Volunteers can arrange to be picked up from the airport and taken to the hostel. Afternoon introductory meeting.

Days 1-6: These days will be dedicated to achieving your Open Water certification. If you already have your Open Water certification then you can work on your Advanced Diving Certification. Days will be spent both in and out of the classroom and pool in order to improve your diving skills and knowledge. After this segment of training, you will travel to the Great Barrier Reef to dive a total of nine dives. Four of the dives will be your final steps in achieving your certification, while the rest will be fun dives, including a night dive. Nights 4 and 5 you will stay overnight on the boat!

Days 7-10: These days will be spent on conservation efforts. Over four days you will travel every day to the outer shelf of the Great Barrier Reef. Here, you will do a total of eight dives, with the majority of them focusing on conservation. While diving, you will collect data, observe the coral reef conditions, and survey the animals and plants surrounding the reef. You will also have the opportunity to go snorkelling recreationally or to do further surveys. During these days you will complete your PADI Project AWARE Specialty.

Day 11: On the last day you will have the opportunity to go to a nearby island to learn about turtle conservation at the Turtle Rehabilitation Centre. You will learn about the organization, meet the turtles currently at the center, and participate in other educational activities as well as enjoying free time to explore the island.

Day 12: Departure day.

Note: Divers who are already Open Water certified and Advanced Open Water certified can join this program on Day 6, Monday, at a discounted rate. All dive equipment is included.

Starting dates - 17.02.20 | 20.04.20 | 25.05.20 | 22.06.20 | 20.07.20 | 24.08.20 | 14.09.20 | 19.10.20 | 07.12.20

Price - \$3,550 AUD

What is included:

- Accommodation in a shared room in a hostel and then in a shared cabin on a boat
- 2 meals per day
- Airport pick-up on arrival at Cairns airport
- A PADI certification
- Transport to and from the diving school

What is NOT included:

- Flights to the departure location
- Visa
- Reef taxes and levies of \$120 (\$60 + 4 x \$15 for each trip to the reef)
- Personal expenses

Extra requirements: students must be in excellent medical conditions (no asthma, diabetes or serious respiratory conditions) | Completed PADI medical form.



FULL TIME VOLUNTEERING

ENVIRONMENT AND WILDLIFE CONSERVATION IN QUEENSLAND

An induction is provided on the first day. You will work from Monday to Friday from 8am to 4pm for 5 days, and either stay at the same location, or move onto another project in a different city, or different state if they have chosen to enrol to participate in projects in two different regions. See projects below.

About your English course

- Study at any of our campuses
- Study for a minimum of 6 weeks
- Study full-time or part-time, depending on your visa
- Available for students from 18 years old
- Minimum English level required: pre-intermediate (pre-test required)

About the volunteering program

- Length: 5 days
- Participants: minimum 4, maximum 8 per group
- Starts once a month on Mondays
- Orientation provided on the first day
- Available to students on a tourist, student or working holiday visa
- Bookings can include multiple locations



KOALA CONSERVATION - GOLD COAST HINTERLAND

- Visit Daisy Hill Koala Centre and Lone Pine Sanctuary for koala encounters and to learn about koala ecology and conservation
- Protect and create critical koala habitat through weed removal and tree planting activities
- Night time wildlife walks to find koalas, gliders, possums and glow worms
- Stargazing and traditional Aussie camp cook up
- Explore the stunning Tamborine National Park for lunch and visit the iconic Curtis Falls
- View the rainforest from the treetops by walking the Tamborine Rainforest Skywalk

KOALA CONSERVATION - SUNSHINE COAST HINTERLAND

- Visit to Moggil Koala Hospital and Lone Pine Sanctuary for koala encounters and to learn about koala ecology and conservation
- Protect and create critical koala habitat through weed removal and tree planting activities
- Night time spotlighting to find wildlife including koalas, gliders, possums and wallabies
- Stargazing and traditional Aussie camp cook up
- Explore the stunning Mt Mee section of D'Aguilar National Park for a picnic lunch and visit Rocky Hole swimming hole



BEACH AND MARINE WILDLIFE CONSERVATION

- Visit the world-famous Carlo Sand Blow and experience 4WD beach driving
- Walk through magical Gondwanan Rainforest to reach the white sandy shores of Poona Lake
- Protect stunning beaches through debris collection, weed removal and pandanus stripping
- Take in breath-taking ocean views at Double Island Point and explore the lighthouse
- Stargazing, camping and traditional Aussie camp cook ups
- Sunset dinners on the beach and whale watching (seasonal)
- Visit Walkabout Creek Wildlife Centre



RAINFOREST CONSERVATION

- Visit ancient Antarctic Beech trees and look for pademelons, land mullets and satin bowerbirds while exploring ancient Gondwanan Rainforest
- Visit the stunning Cave Creek for a private tour of Germaine Greer's home-grown rainforest
- Visit the famous "Natural Bridge" and look for glow worms and glow in the dark mushrooms
- Night time spotlighting to find wildlife including frogs, gliders and possums



OUTBACK CONSERVATION

- Carry on Steve Irwin's legacy by helping to rehabilitate a property that was purchased by the Crocodile hunter himself!
- Close encounters with native Australian wildlife at the sanctuary on site
- Night time spotlighting to find wildlife including kangaroos, gliders, possums and wallabies
- Stargazing and traditional Aussie camp cook up
- Visit to the world famous Bunya Mountains National Park

Starting dates - Once a month on Mondays (*contact us for more precise dates*)

Price - \$995

What is included:

- Accommodation while volunteering (hostel, camping, caravans. This varies according to the location of the project).
- All meals, including on weekends
- Project-related travel
- Conservation Volunteers wildlife or plant guidebook
- Volunteer Certificate on completion

What is NOT included:

- Flights to the volunteering location
- Personal expenses
- Personal transportation
- Airport pick-up on arrival
- Visa
- Laundry, medical expenses, personal travel insurance and items of a personal nature

Extra requirements: Good physical condition | Love of the outdoors | Great interest for the environment.
Langports Agent Manual - August 2020



FULL TIME VOLUNTEERING

ENVIRONMENT AND WILDLIFE CONSERVATION IN OTHER LOCATIONS

An induction is provided on the first day. You will work from Monday to Friday from 8am to 4pm for 5 days, and either stay at the same location, or move onto another project in a different city, or different state if they have chosen to enrol to participate in projects in two different regions. See projects below.

About your English course

- Study at any of our campuses
- Study for a minimum of 6 weeks
- Study full-time or part-time, depending on your visa
- Available for students from 18 years old
- Minimum English level required: pre-intermediate (pre-test required)

About the volunteering program

- Length: 5 days
- Participants: minimum 4, maximum 8 per group
- Starts once a month on Mondays
- Orientation provided on the first day
- Available to students on a tourist, student or working holiday visa
- Bookings can include multiple locations



CASSOWARY COAST CONSERVATION

- Discover the tropical rainforests and beaches of the Cassowary Coast, including the palm-fringed stretch of Mission Beach
- Volunteer to create habitat for threatened species such as the Southern Cassowary and Mahogany Glider
- Wildlife spotting, including the Threatened Southern Cassowary and Estuarine Crocodiles
- Rainforest Walk and lookout at Murray Falls inside the Girramay National Park.
- Explore the beautiful swimming hole at Babinda Boulders, and learn of the Traditional Aboriginal Dreamtime Story focused on this magical place surrounded by rainforest



WET TROPICS RAINFOREST CONSERVATION

- The Volcanic Lakes of Lake Barrine and Lake Eacham
- Malanda Falls and rainforest walk
- Nocturnal wildlife walk
- Two hidden waterfalls taking you off the beaten tourist track
- Platypus spotting over lunch
- Helping conserve nature refuges in the Wet Tropics region



THE GREAT OCEAN ROAD

- Discover the Great Ocean Road and be awe-struck by the incredible Twelve Apostles, London Arch and Loch Ard Gorge along the Shipwreck Coast
- Visit iconic Bells Beach, a world-famous surfing location and the Eastern View Memorial Arch
- Volunteer and learn a diverse range of practical conservation skills that impact important wetlands, coastal sand dunes, woodlands and more
- Explore rainforests, waterfalls, inland plains, coastal and mountain regions, plus Otway and Port Campbell National Parks
- See loads of wildlife such as koalas, kangaroos, emus, brolga, dolphins and migrating whales (June-Sept) and enjoy the rugged coastline of south west Victoria
- Experience an abundance of native animals at Tower Hill and enjoy a guided twilight tour to gain insights into Indigenous culture and Aboriginal lifestyles

Starting dates - Once a month on Mondays (*contact us for more precise dates*)

Price - \$995

What is included:

- Accommodation while volunteering (hostel, camping, caravans. This varies according to the location of the project).
- All meals, including on weekends
- Project-related travel
- Conservation Volunteers wildlife or plant guidebook
- Volunteer Certificate on completion

What is NOT included:

- Flights to the volunteering location
- Personal expenses
- Personal transportation
- Airport pick-up on arrival
- Visa
- Laundry, medical expenses, personal travel insurance and items of a personal nature

Extra requirements: Good physical condition | Love of the outdoors | Great interest for the environment.



FULL TIME VOLUNTEERING



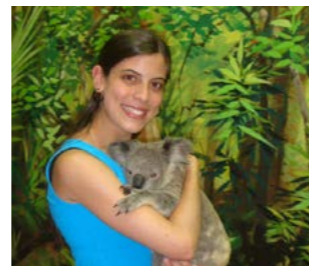
ENVIRONMENT AND WILDLIFE CONSERVATION IN NEW SOUTH WALES

By joining this program, students will have the opportunity to help repair some of the damage created by human development and natural disasters to Australia's unique wildlife, and make a real contribution to the conservation of threatened species by protecting indigenous animals and plants.

Location:

New South Wales (town of Calga)

Students will need to make their way to Sydney at their own costs.



About your English course

- Study at our Brisbane, Gold Coast or Sydney campuses
- Study for a minimum of 6 weeks
- Study full-time or part-time, depending on your visa
- Available for students from 18 years old
- Minimum English level required: intermediate (pre-test required)

About the volunteering project

- Length: 1 or 2 weeks (3 or 4 weeks available upon request)
- Participants: minimum 4, maximum 10 per group
- Set starting dates: every Sunday
- Orientation provided on the first day
- Offshore bookings
- Available to students on a tourist, student or working holiday visa

Program schedule:

Arrival Day - Sunday: Arrive at Sydney Kingsford Smith International Airport (SYD). You will be picked up from the airport, settle into your new home in Beecroft and meet fellow volunteers.

Days 1 - Monday: During their first Monday, volunteers will receive a welcome introduction and receive a tour of the sanctuary.

Days 2 to 5, Tuesday - Friday: Rewarding volunteer work at the wildlife sanctuary, with a lunch break in between shifts. The sanctuary provides a safe natural home for over 180 species while also providing a refuge for rehabilitated but un-releasable injured and orphaned animals. The purpose of this program is to protect indigenous animals and plants, plus care for the dependent and wild animals that live there. Volunteers will prepare food, feed the animals, clean enclosures, maintain the sanctuary itself and partake in other related tasks.

Day 6 - Saturday: Volunteers staying only one week will depart on this evening. Free day for those extending.

Day 7 - Sunday: Free day for those extending to spend how they wish.

Remaining Weeks: The remaining weeks will follow the schedule of volunteering Monday-Friday and having weekends free.

Starting dates - Every Sunday.

Price - \$1,900 (1 weeks), \$2,700 (2 weeks)

What is included:

- Accommodation at the sanctuary (shared dormitory with up to 9 other volunteers, single sex rooms)
- 3 meals a day during the week and 2 meals a day on the weekends
- Airport pick-up from Sydney airport on arrival

What is NOT included:

- Flights to Sydney
- Personal expenses
- Travel to and from the sanctuary during your free time
- Food on the weekends if you choose to leave the sanctuary
- Train ticket from Gosford back to Sydney on departure day
- Visa

Extra requirements: Vaccines/Immunisations | Interest in the Australian Wildlife and animal rescue in general | Volunteers need to bring their own gardening gloves | Volunteers need to bring wet weather gear (rain jackets, gumboots etc.)

Policies and Procedures - Enrolments

English + demi-pair

1. Student fills in the demi-pair application form (recommended lead time is 8 weeks), along with some photos
2. Send the demi-pair application to the relevant Regional Marketing Manager at Langports
3. Langports' demi-pair coordinator will interview the student on Skype to assess their suitability for the program and spoken English level
4. Once the student has been approved as a demi-pair, you can send the student's English course enrolment form to the relevant Langports Enrolments Officer
5. If a student is unfortunately not approved as a demi-pair, they may still apply to study a course at Langports. If their application was rejected because of their English level, they may wish to become a demi-pair after improving their skills and can be re-assessed later on (once they reach a pre-intermediate level)
6. A Letter of Offer and Invoice covering both the English course and demi-pair will be sent back for the student to sign and pay
7. Agent sends Langports the student's flight arrival details and then, approximately 3 to 4 weeks before the student arrives, the host family details will be confirmed and sent to the student.

English + Internship Enrolments

For the application process for the English + work experience and English + professional placement programs please read page 49.

English + Volunteering Enrolments (Eco Volunteering & Aboriginal Experience)

1. Student fills in the volunteering application form (recommended lead time is 6 to 8 weeks), Langports Enrolment form, a pre-test and copy of passport prior to beginning the course
2. Send the volunteering application to the relevant Regional Marketing Manager at Langports
3. Langports will check the possibilities and a letter of Offer and Invoice covering both the English course and volunteering will be sent back for the student to sign and pay
4. Agent sends Langports the student's flight arrival details and then, approximately 3 to 4 weeks before the student arrives, the accommodation details will be confirmed and sent to the student.

English + Volunteering Enrolments (Child Care & Community)

1. Applications can only be made onshore once student has begun their course
2. Students must discuss the options the Recreation and Community Engagement Officer



Frequently Asked Questions - English + Volunteering Program

What visa do students need?

Students can volunteer on all types of visa as it is unpaid and not replacing the job of a local.

Can students undertake a volunteering program without studying any English before?

No, the minimum study length before any volunteering program is 6-12 weeks (part-time or full-time), depending on the program.

What is the agent commission for a volunteering placement?

To keep costs low, unfortunately there is no commission on this program, only on the tuition fees.

Frequently Asked Questions - English + Internship Program

What are the differences between the 2 internship programs available at Langports?

	English + Work Experience Program	English + Professional Internship Placement
Visa	Student visa or WHV	WHV only
English course length	Minimum 4 weeks prior to the internship	
English level required	Minimum intermediate level	Minimum upper-intermediate level (equivalent to IELTS 6.5)
Internship length	4, 6, 8 or 12 weeks depending on visa & area	12 weeks compulsory
Internship areas	Tourism & Hospitality, General Administration, Marketing, Communications, Events, Finance & Human Resources	Advertising, Accounting, Architecture, Education, Finance, Human Resources, IT, Logistics, Marketing, Public Relations, Sports Management and Engineering
Internship placement lead time	At least 10 weeks	At least 6 months
Internship placement price	From \$630 to \$1,010 (public liability insurance not included*) depending on the internship location and length. Full fees must be paid upfront for the placement process to begin. *Langports can organise this insurance upon request for a cost of \$2 per day.	From \$1,950 to \$2,700 for 12 weeks (public liability insurance included) depending on the internship area. A \$1,000 deposit must be paid for the placement process to begin. Remaining fees must be paid within 3 days of accepting an internship position, directly to our internship provider's account.

Can students start an internship at any time of the year?

It is extremely hard to find internship placements from the 1st week of December to mid- January, as most business are closed or slow down for summer holidays, Christmas and New Year at that time of the year. We ask students to be flexible and if possible start in November, or late January.

If students study at Langports Gold Coast, can they also do an internship there?

Placements on the Gold Coast are very unlikely so it is important that students understand that if they study on the Gold Coast and apply for an English + Internship Program, they will probably be asked to relocate to another city for their internship part of the program.

Do students get paid during their internship?

No, all internships are unpaid.

Is internship a part of English course? How many hours does students work for Internship program?

Unfortunately, internships are not considered as courses and therefore we are unable to issue CoE for the internship part of the English + Internship program. This means that students interested in doing an internship must undertake their placement during the holiday part of their visa.



Frequently Asked Questions - English + Internship Program

What type of visa do students need to enrol in the internship program?

Students interested in an internship placement must be in Australia on a visa allowing them to work, that is a student visa, Working Holiday Visa or Work and Holiday visa. The internship programs are NOT available to students on a tourist visa.

Is the internship considered part of a course?

The internship placements are NOT included on CoEs. They are not registered as courses and must be undertaken during breaks/holidays.

Langports has 2 English + Internship programs. Which program is available to which country?

The English + Work Experience Program is available to students from all countries.

The English + Professional Internship Placement is available to students from the following countries ONLY: Argentina, Belgium, Chile, Czech Republic (from 2018), Denmark, Estonia, Finland, France, Germany, Hong Kong, Hungary, Indonesia, Italy, Japan, Korea, Luxembourg, Netherlands, Norway, Poland, Portugal, Slovak Republic, Slovenia, Spain, Sweden, Taiwan, Thailand, Turkey, Uruguay & Vietnam.

Can students find a paid job during their internship?

As long as the paid work does not overlap or interfere with the hours of their internship, then there is no problem with working an additional job.

With the English + Work Experience Program, most internships are undertaken during office hours (between 8am – 5pm from Monday to Friday), except for Internships in Tourism & Hospitality, meaning that students could potentially find an extra student job on the weekends.

With the English + Professional Internship Placement, most internships are undertaken during office hours (between 8am – 5pm for 3 or 4 days per week), meaning that students can potentially have 1 or 2 days free a week + weekends to find an extra student job if needed.

Can students choose their host company?

NO, students can indicate preferences but all placements are based on availability at the required times, previous experience, previous studies, English level etc. If a company is interested in hosting a student and the interview is successful, then we will confirm this placement

What if a student finds a paid job during the internship placement?

We ask to provide one week notice to the host internship company to quit the placement. No refunds are given.

Are there any internships available for more than 3 months?

NO, we can organise 12 week placements maximum.



Frequently Asked Questions - English + Demi-pair Program

What visa do demi-pair students need?

Our demi-pair program can be combined with UFO English full-time program, or with an exam preparation course if students feel like they are up for a more challenging experience (FCE, CAE, IELTS or TOEIC+). This program is only available to students on a student visa, working holiday visa or Work and Holiday Visa.

What does the demi-pair placement fee include?

This price includes the placement in a family, but also:

- the airport transfer on arrival (our demi-pair coordinator, or her husband if she is not available, goes herself to the airport to welcome the student),
- a liability insurance
- and a “membership”, meaning that if all goes well, we can organise other placements for the student for free, for the remaining time of their visa.

What type of tasks will demi-pair students have to do?

Tasks in the family can include the following: preparing meals or helping to prepare meals, ironing, washing clothes and folding, vacuuming, washing floors, dusting, cleaning bathrooms including toilets, cleaning up kitchen after meals, tidying common areas and children’s rooms, preparing children’s lunch, waking up children and getting them ready for school, taking them to school and/or picking them up from school, helping children with homework, helping children getting ready for bed including assisting them with their bath, organising some activities for the kids etc.

Can students choose the length of their demi-pair placement?

Each placement lasts for 12 weeks (= we can only guarantee a demi-pair placement for 12 weeks and we cannot place students for less than 12 weeks). However, students can enrol for a longer course & if they wish to keep going with the demi-pair program after their first 12 weeks, students can:

- renew their placement in the same family for another few weeks (if the family still is available and providing that the first placement went well), for free.
- renew their placement in another family for another 12 weeks providing that the first family gives good references about the student (great behaviour, personality and motivation), for free.
- or decide to choose another type of accommodation (at an extra cost, depending on which type of accommodation they choose).

We usually ask students about their plans in week 9 or 10, so that we have time to get organised. Altogether this means that students can enrol for programs that are longer than 12 weeks (for the English course) but we will only guarantee the demi-pair placement for the first 12 weeks.

Can students start a demi-pair placement at any time of the year?

It is extremely hard to place demi-pair students from the 1st week of December to the last week of January, as most Australian families are away for summer holidays, Christmas and New Year at that time of the year. We ask students to be flexible and if possible start in November, or late January. Students wishing to start a Cambridge course early January and combine it with the demi-pair program may need to book 4 weeks of homestay to start with, before moving to their demi-pair family. They will still be required to work in the demi-pair family for 12 weeks.



Frequently Asked Questions - English + Demi-pair Program

Demi-pair placements last for 12 weeks – what if a student wants to enrol in a 10 week CAE course only?

Students wishing to enroll for a 10 week CAE course + 12 week demi-pair program are allowed to do so (= study for 10 weeks only and work in the family for 12 weeks in total, meaning that they will stay in the family for an extra 2 weeks after their course finishes) as we usually cannot offer a higher general English course for just 2 weeks after CAE.

Can students combine any course they want with the demi-pair program?

The English + demi-pair program can be combined with the following courses:

- UFO English part-time (only for students on a Working Holiday Visa)
- UFO English full-time (Use, Focus and Options only, students will NOT be able to attend the Workshops).
- IELTS exam preparation course
- EAP
- TOEIC exam preparation course
- FCE exam preparation course
- CAE exam preparation course (only for students who feel like they are up for a challenging experience due to the homework load in CAE courses)
- We strongly advise CPE students NOT to combine CPE + demi-pair due to the very heavy workload in the CPE course.

When can students arrive in their demi-pair families?

Demi-pair families can only welcome students between 6am and 6pm, preferably on weekends. Week-day arrivals will depend on a case by case basis depending on the arrival time & family availability.

This means that students must :

- land between 5am and 4pm if landing in Brisbane and going to Brisbane
- land between 5am and 4pm if landing in Sydney and going to Sydney
- land between 5am and 4pm if landing in Gold Coast and going to Gold Coast
- land between 5am and 3pm if landing in Brisbane and going to the Gold Coast

Indeed it takes on average 1h for students to go through immigration and get their luggage + 1 to 2h to drive to the demi-pair families depending on the location.

If landing outside of these hours, students will be responsible for their own accommodation for the first night, at their own expenses. Their pick-up will then be organised from their accommodation at 10am on the next day.

How do you organise the demi-pair placements?

All demi-pair placements are organised by our demi-pair coordinator based on the students’ study period, their school timetable, the families’ availability, and both parties’ personalities & preferences. Students’ comments on their application form (for instance “I would prefer kids over 5 years old” or “ I would like to be located close to school”) will be taken as preferences only, not as compulsory requests.





LANGPORTS

Accommodation

Accommodation - Homestay

Langports has 4 types of homestay accommodation options.

- Deluxe homestay:** Own bathroom, only one student per family, interaction with family, laundry done for you. Breakfast and Dinner: Mon-Fri. Breakfast, Lunch, and Dinner: Sat-Sun.
- Family homestay:** Shared bathroom, maximum 2 students per family, students of different nationality, interaction with family, laundry done for you. Breakfast and Dinner: Mon-Fri. Breakfast, Lunch, and Dinner: Sat-Sun.
- Self cater homestay:** Shared bathroom, no limit on student numbers, no restriction on nationality mix, limited interaction with family, do own laundry. Please note that this is not the same as Student Housing and students stay with a single person or sometimes a couple. Breakfast only Mon-Sun.
- Under 18 homestay:** Compulsory for under 18 years old Students, private room with a desk, chair, wardrobe and comfortable bed, shared bathroom, maximum 2 students per family, from different nationalities, half-board during the week and full-board on weekends, opportunities for interaction with the family, from 30 to 50 minute traveling time to Langports (by train, bus or ferry), under 18 students must book return airport transfers & follow under 18 rules/guidelines (contact us for more information).

All accommodation options are inspected personally by Langports' own Accommodation Officers, ensuring that they meet Langports' high standards.

In all homestays, students have their own single room, with a comfortable bed, desk, chair and wardrobe. All families live close to a bus stop or train station, and are no more than 40-60 minutes traveling time from Langports in peak hour (some much less in normal traffic).

Langports host families who accept students aged under 18 years have been assessed as appropriate carers by the Queensland Government Commission for Children and Young People or the Office of Children's Guardian in New South Wales. If underage students are travelling to Australia on a student visa, an adult permanently residing in Australia must be appointed as the adult responsible for the student for the length of the stay and this may involve an extra fee for guardianship. All under 18 students must book an airport transfer, including a return transfer if they are still under 18 when they finish their studies.

Homestay conditions

- Students staying with families over the Christmas holidays will be asked to pay an extra \$60/week for the Christmas
- There is a holding fee of \$50/week if students wish to hold their place in homestay while they travel. (max length 2 weeks)
- There is a minimum stay in homestay of 4 weeks (unless the course is 1, 2 or 3 weeks where the student can stay for that period).
- Students arriving between 10pm and 6am may need to arrange temporary accommodation in a hostel if the family is unavailable to welcome them at that time. Langports can assist with this. There is also an extra late night charge for airport transfers arriving at this time
- Students can enter homestay no earlier than the weekend before their course start date.
- Students must leave their homestay the Saturday / Sunday after their course finishes unless they have a Cambridge exam the following week.



Homestay Profile

Surname: Golden
Type: Family Homestay
Address: 501 South Pine Road
Phone:
Email:

Members:
Name: Occupation:
Lisa Occupational Therapist
Matilda Daughter born 02.01.2000
Bridie Daughter born 14.04.1998
Dog

Family Facts:
Limited internet available—students will require their own computer
Dog

Hobbies & Interests:
The Stitt family enjoy going for walks, going to the movies and water polo. They like reading but are an active family.
They have hosted international students in the past and look forward to welcoming more students to their home.



Students will receive a Langports Family profile with pictures, maps and information about their accommodation at least three weeks prior to their course start date. Every effort is made to match the student with the best possible family.



Student Accommodation Brisbane

Langports also arranges student accommodation as an alternative to homestay. The options vary depending on each school, but all options are inspected by our staff to ensure quality is maintained.

Please check availability with our Accommodation Officer

<http://www.langports.com/locations/brisbane/accommodation/>

OPTION 1: Langports Residence

A brand new apartment block in the City Centre:

Key points:

- Bedroom is provided with air conditioning, study desk, chair, pin board, wardrobe, draws and shelving.
- The kitchen includes table, seating, fridge/freezer, cupboards, oven, electric hot plate and microwave.
- The lounge space includes television and lounge seating.
- Unlimited High speed Wi-Fi internet included free of charge.
- Self-Catered (no meals included).
- Access to the Daily events program (e.g movie nights, tours, cooking classes).
- Kitchen equipment, bathroom packs & bed linen available for purchase or hire, or you can bring your own bedding, towels and kitchen equipment.
- Facilities include multiple study rooms, relaxation spaces and common areas, multimedia room, BBQs, gym (no extra fee), games room, common kitchen, bicycles and onsite laundries.

Location:

- Located in the city centre
- 15-20-minute walk to Langport's so no travel cards and costs are necessary

Conditions:

- Two weeks minimum stay.
- Flexible arrival times, we are open 7 days a week and 24 hours a day. You can arrive at any time by your own means or with a Langports transfer.
- A bond of \$400 is invoiced at the time of booking. This amount will be refunded at the end of your stay if there are no cleaning or damages fees.
- On your departure a room inspection will be conducted. If the apartment is not up to standard, we will organise cleaners.
- Exit/Cleaning Fee is \$100.00.
- Unfortunately, you cannot self-select the apartment.
- Students are required to sign Residential Agreements so are contracted to stay for the full pre-booked and pre-paid period.



Student Accommodation Brisbane

OPTION 2: Student Central Apartments

A brand new apartment building purpose designed for students, only 3 minutes to Central Station in the City:

Key points:

- Fully furnished 5 bedroom apartment to share (two bathrooms, one kitchen and the recreation area for students to share).
- Rooms with a private kitchen available upon request at an extra cost.
- Free unlimited High Speed internet throughout the building.
- Inhouse cinema and games room.
- Outdoor BBQ and communal kitchen facilities.
- Numerous lounges and internal study areas.
- Free fully equipped gymnasium.
- Free share bikes.
- Modern laundries (usage charges apply).
- Ground floor and nearby cafes, dining and grocery outlets.
- 24 hour access to the customer service team.

Location:

- Located in the Central Brisbane District, 3 minutes from Central Station.
- 15-20 minute walk or a 10 minute bike ride to Langports so no travel cards and costs are necessary.

Conditions:

- Arrivals possible Monday to Sunday.
- Self catered – no meals included.
- Students are required to sign Residential Agreements so they are contracted to stay for the full pre-booked and pre-paid period.
- Students can choose to purchase packs with pillows, bed linen and crockery from Reception on arrival which are then theirs to keep from \$11 to \$129
- Alternatively, they may choose to bring or buy their own items for their personal use.
- Minimum stay is 4 weeks.
- No bond required for booking up to 12 weeks.
- Bond equivalent to a 4 week rent for bookings longer than 12 weeks
- Cleaning fees will only be charged at the end of the booking period if the room is not left in the condition it was found.
- Prices are displayed on our website



Student Accommodation Brisbane

OPTION 3: Student Village Apartments

A brand new apartment building designed for students:

Key points:

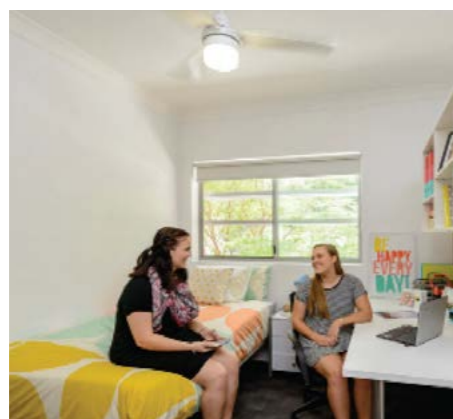
- Fully furnished single rooms with share bathroom in a 5-bedroom apartment
- 15GB per month of free wireless internet throughout the building
- Shops, restaurants, cafes and bars a couple of minutes away
- Student lounge, BBQ's and outdoor spaces & games room
- Free gym
- Bike storage area.
- 24x7 onsite laundries (usage charges apply)
- 24-hour onsite staff presence

Location:

- Located in the heart of a University Village just a 10-minute bus ride from the City Centre

Conditions:

- Arrivals possible Monday to Sunday – 24 hours
- Self-catered – no meals included
- Deposit/Bond – A deposit of \$350 is payable to confirm the booking. On arrival this deposit will then be used as a bond which is fully refundable after the stay assuming there are no outstanding accounts, damage to the room or cleaning required on departure day
- Students are required to sign Residential Agreements so they are contracted to stay for the full pre booked and pre paid period
- Students need to purchase a linen, crockery and cutlery pack at \$120 per person and then are yours to keep
- Minimum stay is 4 weeks



Student Accommodation Gold Coast

Langports also arranges student accommodation as an alternative to homestay. The options vary depending on each school, but all options are inspected by our staff to ensure quality is maintained. Please check availability with our Accommodation Officer

<http://www.langports.com/locations/gold-coast/accommodation/>

OPTION 1: Student House Australia

Langports provides student accommodation on the Gold Coast, which is exclusive to Langports students, and is managed by Susie France (John France's wife). There are three houses, all located within 20 minute walk from the school: each house has been comfortably furnished and has a maximum of 5 students. The beach is only a 10 minute walk away and shops and cafes are located nearby. Note that this is a house share accommodation. Therefore, students are responsible for keeping the house clean.

Key points:

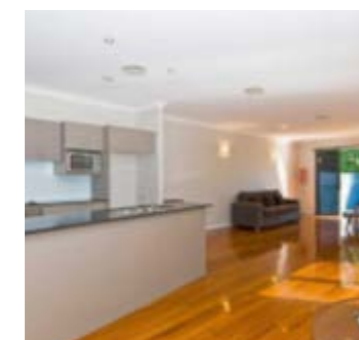
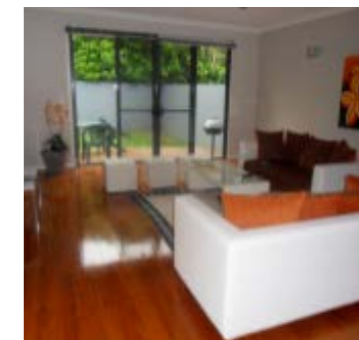
- 3 houses available
- Single rooms and twin rooms available
- Shared bathroom
- Maximum 5 students per apartment
- No restriction on nationalities
- Wi-Fi included
- Self-catered (no meals included) and students are responsible to keep the area clean and tidy (no cleaning service provided)
- Kitchen equipment, linen & towels provided
- Facilities include king size single beds, a TV, a laundry machine and a patio area
- Minimum age 18 years old

Location:

- On Paradise Island and Chevron Island, in Surfers Paradise, within 6 – 20 minute walk to Langports.

Conditions:

- Bookings are from Saturday to Saturday
- Check-in at the apartment is between 9am to 8pm
- It is compulsory to arrive at the house with a Langports airport transfer
- \$200 linen and key deposit is invoiced at the time of booking
- Minimum stay is 4 week. If the Student Houses are fully booked at the time of your enquiry, other options may be available



Student Accommodation Gold Coast

OPTION 2: Student Apartment Top of the Mark

Key points:

- ✿ 2 apartments available from September to June only
- ✿ All rooms are twin share with Langports student of the same gender
- ✿ Private bathroom in each room (shared between roommates)
- ✿ Maximum 4 students per apartment
- ✿ No restriction on nationalities
- ✿ Free unlimited wifi
- ✿ Self-catered (no meals included) and students are responsible to keep the area clean and tidy (no cleaning service provided)
- ✿ Kitchen equipment, linen & towels provided. Linen change and bathroom sanitation is provided every 10 days
- ✿ Facilities include king size single beds, a TV, a laundry machine. Building facilities include tennis courts, BBQ area, swimming pool. If students use complex facilities, they have to follow the rules applied to communal areas by on-site management. Strictly no parties and no smoking within the complex, security cameras are in use
- ✿ Minimum age 18 years old

Location:

- ✿ Orchid Avenue, in the heart of Surfers Paradise, within 6 minute walk to Langports

Conditions:

- ✿ Bookings are from Saturday to Saturday
- ✿ Check-in at the apartment is between 9am to 9pm
- ✿ It is compulsory to arrive at the house with a Langports airport transfer
- ✿ \$350 key deposit is to be paid upon arrival, \$75 exit cleaning fee is deducted upon departure
- ✿ Minimum stay is 8 weeks



Student Accommodation Gold Coast

OPTION 3: Student Apartment Ashleigh Lodge (Budget)

Key points:

- ✿ 7 apartments available
- ✿ Twin rooms available
- ✿ Shared bathroom
- ✿ Maximum 4 students per two-bedroom unit, 2 students per one-bedroom unit
- ✿ No restriction on nationalities
- ✿ Free unlimited wifi
- ✿ Self-catered (no meals included) and students are responsible to keep the area clean and tidy (no cleaning service provided)
- ✿ Kitchen equipment, linen & towels provided. Change of linen and bathroom sanitation is provided every 10 days
- ✿ Facilities include single beds, a TV, communal laundry outside, table tennis, BBQ area, swimming pool. If students use complex facilities, they have to follow the rules applied to communal areas by on-site management
- ✿ Minimum age 18 years old

Location:

- ✿ In Surfers Paradise, within 10 minute walk to Langports, 2 min to the beach

Conditions:

- ✿ Bookings are from Saturday to Saturday
- ✿ Check-in at the apartment is between 10am to 10pm
- ✿ It is compulsory to arrive at the house with a Langports airport transfer
- ✿ \$250 key deposit is to be paid upon arrival, \$75 exit cleaning fee is deducted upon departure
- ✿ Minimum stay is 6 weeks



Student Accommodation Sydney

Langports also arranges student accommodation as an alternative to homestay. The options vary depending on each school, but all options are inspected by our staff to ensure quality is maintained. Please check availability with our Accommodation Officer <http://www.langports.com/locations/sydney/accommodation/>

OPTION 1: Modern Student Apartments – Link2

Students can stay in modern and secured apartments professionally managed by Link2. There are single rooms or twin shared rooms available.

Key points:

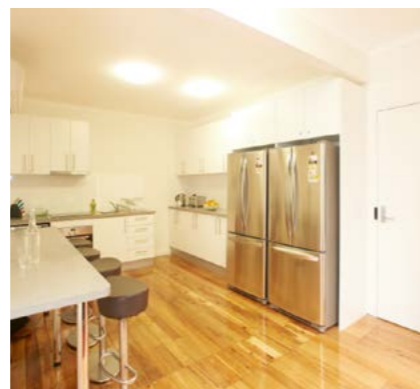
- ✿ Single rooms and twin rooms available
- ✿ Private or shared bathroom
- ✿ From 7 to 9 students per apartment
- ✿ No restriction on nationalities
- ✿ Wi-Fi included
- ✿ Self-catered (no meals included)
- ✿ All rooms have a bed, a wardrobe, a desk, double glazed windows and air-conditioning
- ✿ Kitchen equipment, linen provided
- ✿ Facilities include a TV area, a Mac computer, a laundry machine, a dryer and irons
- ✿ Minimum age 18 years old
- ✿ All rentals include: pillow top mattresses, dura fleece blanket, comfortable study chair, desk lamp, swipe card entry, full house cleaning 3 times a week, linen pack, commercial grade bed, wardrobe and desk unit, welcome pack for every student, reverse cycle air conditioner, not wheelchair accessible

Location:

- ✿ 2 locations are available. Apartments are located in Broadway and in Haymarket, 23 and 20 min walking to Langports or 16 and 14 min by bus or light rail (aprox. \$2.10) respectively

Conditions:

- ✿ Arrivals possible from Monday to Sunday
- ✿ You can come to the apartments at any time (24 hour check-in available), by your own means or with a Langports transfer
- ✿ Minimum stay is 2 weeks; however bookings of less than 28 days will incur a \$50 surcharge



Student Accommodation Sydney

OPTION 2: Surry Hills Lodge

Surry Hills Lodge is located on the corner of Thurlow and South Dowling Streets which is within an easy stroll to the bustling shops, cafés, markets and galleries of Oxford Street, Crown Street and Cleveland Street. Central positioning makes for easy access to Central Railway Station and public transport hubs, including city bus routes that service both the City and Eastern suburbs and Easy access to Sydney Airport.

Key points:

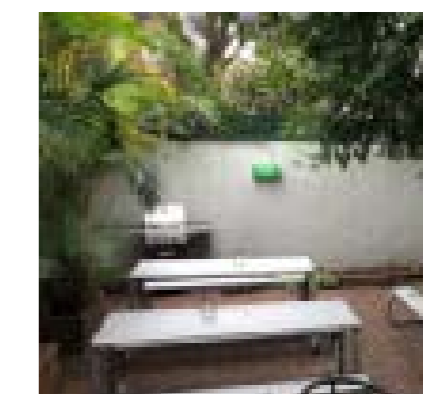
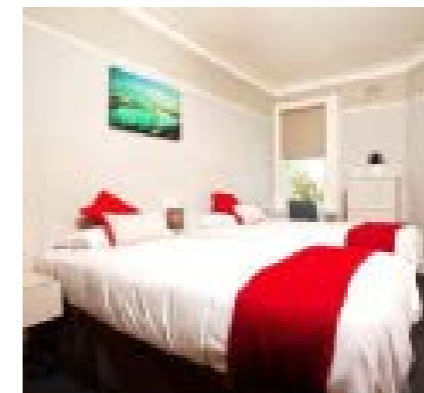
- ✿ 3 level building, offering 22 Bedroom accommodation
- ✿ Single, twin share and triple share rooms available (twin bedrooms and triple rooms cannot accommodate single travellers, they are designed to accommodate friends or couples travelling together) – A single student can book a twin or triple room for themselves.
- ✿ Mix of private and shared kitchenettes
- ✿ Mix of ensuite and shared bathrooms
- ✿ Communal areas including 2 kitchens, laundry, BBQ and indoor dining areas
- ✿ Additional communal areas, include full kitchens, an outdoor courtyard area suitable for gatherings with BBQ facilities and an indoor dining space
- ✿ All rooms also have access to WiFi
- ✿ Shared laundry facilities are located on the ground level
- ✿ Minimum age 18 years old

Location:

- ✿ Surry Hills Lodge is located within 34 minutes by bus or light rail to Langports (aprox. \$2.20*)

Conditions:

- ✿ Arrivals possible from Monday to Sunday
- ✿ You can come to the residence by your own means or with a Langports transfer
- ✿ Check-in is usually from 12pm
- ✿ Minimum stay is 4 weeks



Student Accommodation Sydney

OPTION 3: Redfern Student Apartments

Live the story of Sydney at Redfern Student Apartments and immerse yourself in this colourful and vibrant community, just 3km from the city skyline, with excellent access to transport and campuses.

Key points:

- ✿ Private rooms with own bathroom in a 6-share apartment, all bedrooms and bathrooms are private
- ✿ Free unlimited WiFi
- ✿ All utilities included (water, electricity and gas)
- ✿ Facilities include: cinema room, pool table, outdoor areas with BBQ, laundry facilities, exercise equipment, access to 24x7 onsite support.
- ✿ All bedrooms have secure swipe card entry, king single bed with under-bed storage, study desk chair and lamp, pin board and bookshelf, plenty of storage, built-in wardrobe.
- ✿ All apartments have an HD Smart TV, lounge area with couch/coffee table, dining table and chairs and a full kitchen with oven, microwave and stovetop, large refrigerator and freezer, kettle and toaster.

Location:

- ✿ Redfern Student Apartments is located within 25 minutes by bus or light rail to Langports (approx. \$2.20*)

Conditions:

- ✿ Arrivals possible Monday to Sunday – 24hours
- ✿ Self-catered – no meals included
- ✿ You can come to the residence by your own means or with a Langports transfer
- ✿ Minimum stay is 4 weeks and maximum 25 weeks
- ✿ The student will be required to pay a \$500 refundable security deposit
- ✿ Student can buy a linen kit: King Single » \$155 | Double » \$165 | Queen » \$175
- ✿ The Kit includes: Duvet / Duvet Cover / Fitted Sheet / Flat Sheet / Pillow / Pillow Case / Bath Towel / Bath Mat / Hand Towel / Laundry hamper / Plate / Bowl / Mug / Cup / Knife / Fork / Spoon / Teaspoon



Student Accommodation Sydney

OPTION 4: Chatswood Student Apartments

For a thriving community and lifestyle opportunity Chatswood Student Apartments has all you need on offer with incredible eateries, entertainment, and shopping options galore, right where you are.

Key points:

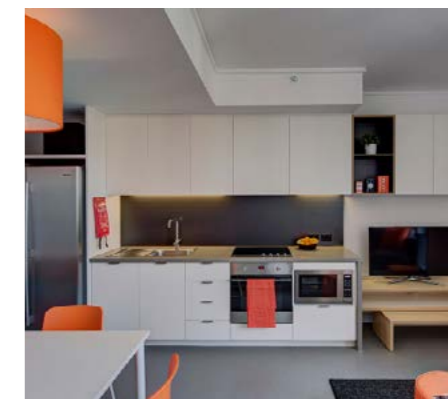
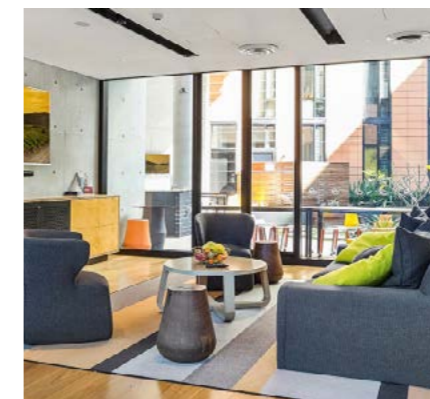
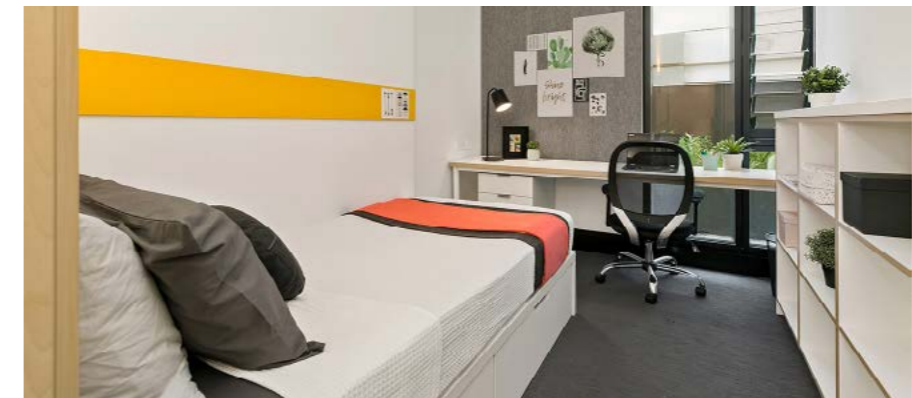
- ✿ Private rooms with own bathroom in a 5-share apartment, all bedrooms and bathrooms are private
- ✿ Free unlimited WiFi
- ✿ All utilities included (water, electricity and gas)
- ✿ Facilities include: cinema room, pool table, outdoor areas with BBQ, laundry facilities, exercise equipment, access to 24x7 onsite support.
- ✿ All bedrooms have secure swipe card entry, king single bed with under-bed storage, study desk chair and lamp, pin board and bookshelf, plenty of storage, built-in wardrobe.
- ✿ All apartments have an HD Smart TV, lounge area with couch/coffee table, dining table and chairs and a full kitchen with oven, microwave and stovetop, large refrigerator and freezer, kettle and toaster.

Location:

- ✿ Greenwich is located within 50 min by public transport to Langports. (approx. \$2.50*)

Conditions:

- ✿ Arrivals possible Monday to Sunday – 24hours
- ✿ Self-catered – no meals included
- ✿ You can come to the residence by your own means or with a Langports transfer
- ✿ Minimum stay is 4 weeks and maximum 25 weeks
- ✿ The student will be required to pay a \$500 refundable security deposit
- ✿ Student can buy a linen kit: King Single » \$155 | Double » \$165 | Queen » \$175
- ✿ The Kit includes: Duvet / Duvet Cover / Fitted Sheet / Flat Sheet / Pillow / Pillow Case / Bath Towel / Bath Mat / Hand Towel / Laundry hamper / Plate / Bowl / Mug / Cup / Knife / Fork / Spoon / Teaspoon



Student Accommodation Sydney

OPTION 5: Potts Point Student Apartments

Potts Point Student Apartments is located in the upmarket Elizabeth Bay suburb, bordering the café and restaurant lifestyle of Darlinghurst, Potts Point and Kings Cross.

Key points:

- ✿ Private single rooms
- ✿ Secure building with private, lockable rooms
- ✿ Under bed storage and study desks in every bedroom.
- ✿ Separate male and female shared bathrooms on every floor
- ✿ 10 GB/month WIFI per person
- ✿ Rooftop terrace with fully equipped kitchen facility and outdoor furniture
- ✿ Flat screen TV with FOXTEL in spacious common lounge
- ✿ Fully equipped commercial grade kitchen
- ✿ Separate communal study room
- ✿ Coin-operated washing machines and dryers
- ✿ Live in House Managers
- ✿ Minimum age 18 years old

Location:

- ✿ Potts Point Student Apartments is located within 25 minutes by bus or light rail to Langports

Conditions:

- ✿ Arrivals possible from Monday to Sunday.
- ✿ You can come to the residence by your own means or with a Langports transfer.
- ✿ Check-in is usually from 12pm.
- ✿ Minimum stay is 4 weeks.



Student Accommodation Sydney

OPTION 6: Greenwich Budget Residence

Greenwich is a suburb on the lower north shore of Sydney. It is 7km north-west of Sydney CBD. The suburb occupies a peninsula on the northern side of Sydney Harbour. The suburb features Harbour views, a few pockets of bushland, shops, restaurants, cafes and a harbour swimming pool.

Key points:

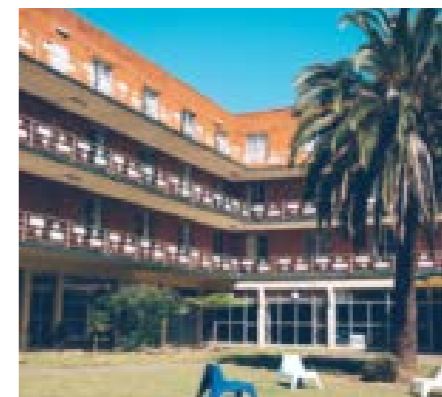
- ✿ This is a low cost accommodation option
- ✿ Outside BBQ area and swimming pool surrounded by relaxing gardens
- ✿ TV and video lounges inside, drink and snack vending machines, communal laundry and ironing room, large kitchen, large study area, table tennis room, large bright dining hall, computers with internet access and photocopying facilities
- ✿ On each floor there is a kitchenette with a microwave, kettle and toaster
- ✿ Security CCTV cameras & overnight management
- ✿ Free WiFi
- ✿ Single, twin share and bunk rooms (3 or more share) available
- ✿ Shared bathroom/toilet facilities – males & females separate
- ✿ Minimum age 18 years old

Location:

- ✿ Greenwich is located within 50 min by public transport to Langports. (approx. \$2.50*)

Conditions:

- ✿ Arrivals possible from Monday to Sunday
- ✿ You can come to the residence by your own means or with a Langports transfer
- ✿ Check-in from 12pm and check-out by 2pm



Frequently Asked Questions - Accommodation

Can students arrive in their homestay during the week?

Langports' homestay placements are from Saturday to Saturday or from Sunday to Sunday. If students wish to arrive earlier or leave after, they can book extra nights. However, please make sure that you check availability for these extra nights with your Regional Marketing Manager or with our accommodation officers before making the booking. If their homestay is not available, our Accommodation Officer will help them to find a hostel to stay at until their room is free (Saturday or Sunday before the course).

Can students arrive in their student accommodation during the week?

Please note that our accommodation options in each school have different arrival rules, so please check our website to find out the correct information for each student accommodation:

Brisbane: <http://www.langports.com/locations/brisbane/accommodation/>

Gold Coast: <http://www.langports.com/locations/gold-coast/accommodation/>

Sydney: <http://www.langports.com/locations/sydney/accommodation/>

Can students stay in their homestay family or at their student house for Christmas?

Yes, they can. However an extra \$60 Christmas fee will apply for this specific week if the student is in a homestay family.

Why should students choose homestay?

When you add up the cost of paying rent, electricity and food in a share house situation, the option of homestay works out to be at a reasonable cost. Plus students get to practice and improve their English faster living with an Australian family! At Langports there are 4 types of homestay: Deluxe, Family, Under 18 and Self-Cater.

Will students have their own room?

Yes, each room contains a desk, lamp, bed and bed linen and a cupboard. Homestay families will also provide towels, but Student Houses will not.

Can students smoke?

If students are smokers please let us know when they apply for their family. The Australian law is very strict about smoking in public places. Students can only smoke 4 meters away from a building entrance.

Will students receive a key to the house?

Yes for both homestay and student houses.

Can students have a friend/relative to stay?

This is something students should discuss with their homestay family. Students staying in a student house cannot bring a friend to stay overnight.

Can students stay at a friend's house?

Usually this is not a problem as long as they let their homestay families know where they are going. Students do not receive a discount on their accommodation if they choose to spend a night away from their family. Also, students under the age of 18 need written permission from their parents before they can stay away.

Should students bring a gift for their family?

Our homestay families do not expect gifts; however it can be a nice gesture. If students wish to give a gift to their homestay family we recommend something inexpensive and particular to the student's area of the world (such as sweets from their country, or a tea towel with a picture on it).

What are "House Rules"?

House Rules are the rules of the homestay family. These rules may include telephoning if students are going to be late for dinner, requests to lock the doors of the home when students leave, or avoid receiving phone calls after a certain time at night. These rules should apply to family members as well as students. In general, students should respect and follow the homestay family's "house rules."

Who are homestay families?

Australia is a multicultural country made up of people from all over the world. There is wide variety among Australian families, with different jobs, interests and ethnic backgrounds. There are some families with pets, some without, some with children, some older, retired people who enjoy the company of international students.

Where are the homestay families?

Langports' homestay families will be no more than approximately 40 – 60 minutes from school by train or bus in peak hour, some much less in normal traffic.

Why can't students arrive in their homestay family during the week?

The weekend is the best time that our students and homestay families can get a chance to get to know each other and become comfortable with one another. There is no chance to do this in the beginning if a student arrives on a weekday because the homestay family will be away at school and/or work. This is why our homestay accommodation policy states that "Students can enter homestay no earlier than the weekend before their course start date."



Frequently Asked Questions - Accommodation

Are there water restrictions in Australia?

Water restrictions have been put in place in many cities and regions in Australia. We ask our students to take a short shower (less than 5 minutes) and watch their daily water usage.

Can students use the Internet in a homestay family?

In Australia, it is not common for families to have an unlimited internet connection. Therefore, we ask students to talk about this in detail with their family. Students should try to limit their internet usage when in the homestay. Students can benefit from the unlimited free wifi connection at their campus.

What type of meals can students expect?

Because of Australia's multiculturalism students can expect a variety of meals. These may include dishes such as: meat and vegetables, pasta dishes, Chinese stir-fry, curries, and roasts. Please indicate on the application if students have a special diet.

What time is the student expected home?

Students need to understand that they are living with a new family that may have different rules to their own. Students and the family need to discuss and decide on a reasonable time to be home. Students should always let their homestay families know where they are and what time they expect to return to the home.

How can students apply for a homestay placement?

Students can request homestay when enrolling or after they begin studying at Langports. Generally, Langports requires 2 weeks' notice to organise their homestay.

If the student wants to extend homestay what needs to be done?

If a student wants to extend their homestay, they should go and see the Accommodation Officer who will take the details and then check availability with the homestay family.

Can a student pay the homestay family directly?

No. Langports organises payments for all homestay families. This is to ensure that there are no late payments, and that the relationship between the student and the homestay family does not deteriorate due to disagreements over money.

If the student has trouble in homestay who should they speak with?

The Accommodation Officer at the college.

How much notice is required if wishing to leave?

A student needs to provide the family and Langports with a minimum of 2 weeks' notice if they wish to end their homestay. Please read our cancellation and refund policy.

What happens if a student doesn't like their homestay family?

Every effort is made to match students with a suitable family. Both students and families must realise that they are dealing with a new culture and both may need to make some compromises. Even if they are matched with a family that is different from what they expected, the homestay experience can be great. In unusual circumstances it may be necessary to move students to a new homestay family. Every situation will be evaluated on an individual basis.

Who does the student call if there is an airport pick up problem?

For Brisbane: Keiko Mancy: 0410 697 672

For Gold Coast: Irina Kolbasina: 0413 567 826

For Sydney: Lucy Kempson: 0499 998 520

Can two students traveling together receive a discount on airport transfer?

Airport transfers are usually charged per person. However, in some cases we can get a discount for shared transfers arriving together and going to the same address. Please contact your Regional Marketing Manager when you have a special request and provide details of the circumstances so that we can find out if the students can get a discounted transfer.

Is there a discount for return transfers?

No, the price is the same as a pick-up transfer.

My student is Under 18 – can they stay at your student residence?

In accordance with Standard 5 of the National Code, Langports and Section 9 of the ESOS act, it is the policy of Langports that an Under 18 student can only be enrolled if the Principal of the respective campus becomes the guardian for that student, assuming that no other immediate family member (or, if on a tourist visa, another appropriate person) is appointed by the student's parents to act as guardian. Langports will assume responsibility for accommodation, support and general welfare arrangements for the duration of Under 18 student's study program plus a period of 7 days either side of the program dates. For welfare, safety and responsibility matters, it is our policy that any Under 18 student under the guardianship of our Principal must be accommodated in an appointed Langports U18 Homestay family for the duration of their enrolment unless they turn 18 during their stay and wish to seek alternative accommodation at that time. Therefore Under 18 students cannot stay at our Student Residence.





LANGP  RTS

Destinations

Langports' stunning school is a 3 level stand-alone, modern building making it one of the largest schools in the city! Students will enjoy studying English in an excellent environment with outstanding facilities.



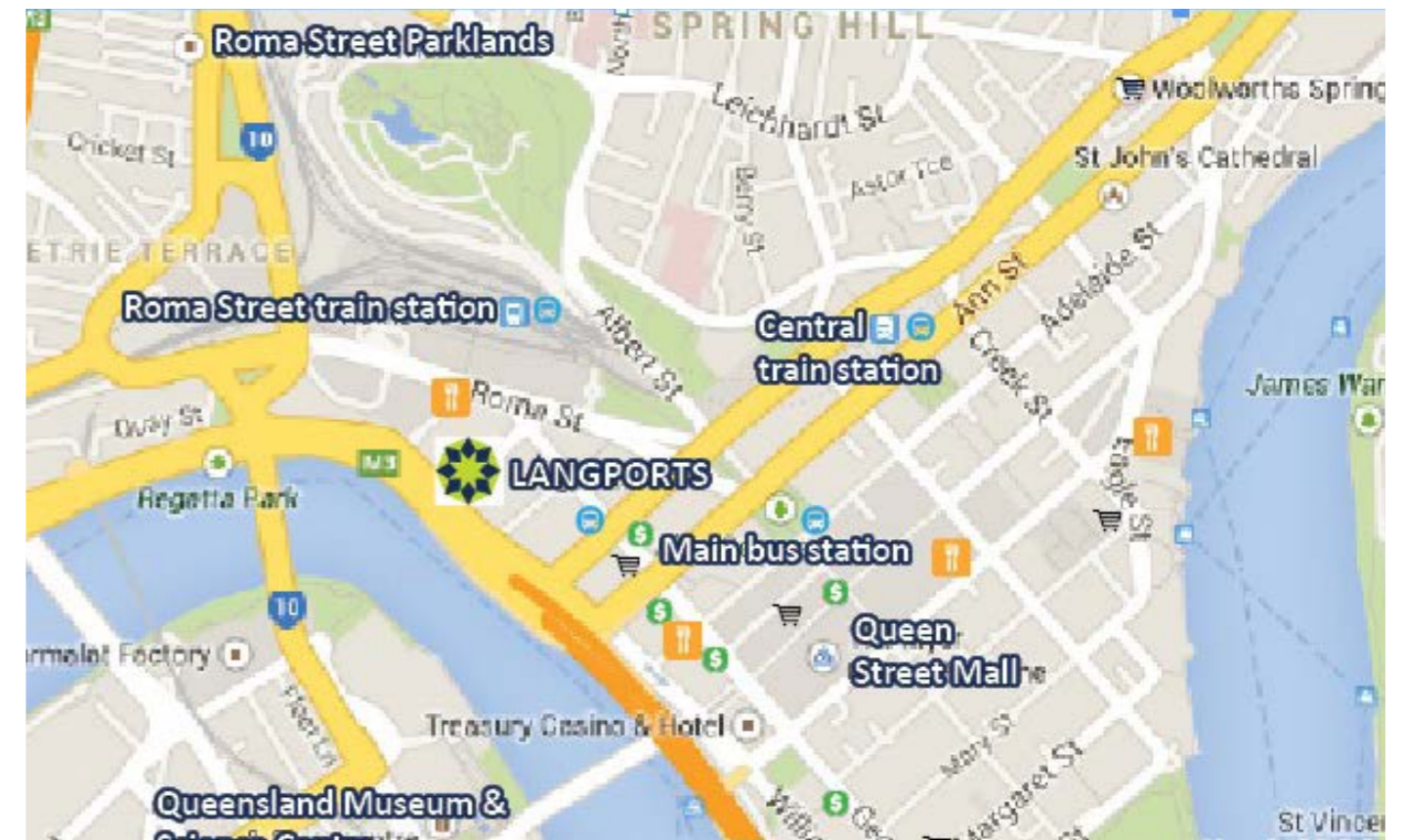
Key points:

- ✿ Central city location and convenient to all public transport (bus & train stations just 200 meters away)
- ✿ Stand-alone, 3 level, city school with 24 modern classrooms with natural light, a student lunch room, kitchen, approximately 50 computers & free wifi, outdoor areas, student lounges, recreational area with games and a library
- ✿ Inter-schools transfers available (conditions apply)
- ✿ Maximum 318 students - Average 265 students
- ✿ Restaurants, cinemas and major shops, all just a short walk from the campus
- ✿ Close to Roma St Parklands, Southbank Parklands and city beach
- ✿ Use of the gym (across the road) at a special Langports student price of \$13.50 (as per August 2017)



You can now check out Langports Brisbane, Gold Coast & Sydney schools from your computer or phone!

<http://virtualtour.langports.com/>



AROUND THE SCHOOL



Restaurants

There are many options available around the campus and in the city center. Students will be able to purchase their lunch and morning break snacks from cafes, bakeries, sandwich bars, restaurants, food courts or convenience stores.



Public transport

The public transport system in Brisbane is very well developed. Students can travel by bus, ferry and train. The campus is located 200 meters from Roma Street train and bus stations, a major public transport stop of the city. Within 5 minutes, students can also reach other major public transport stations such as Central station, King George Square station and Queen street mall station. During peak hours, there are trains, ferries and buses every 10 minutes.



Supermarkets

There are a lot of supermarkets within short distances from the campus where students can buy their lunch or do their grocery shopping for the week. Supermarkets such as IGA, Night Owl, 7 Eleven, Coles Express and Woolworths can be found.



Banks

There are several banks just around the campus where students will be able to open a bank account and withdraw money. The most popular banks are Commonwealth Bank, ANZ, Westpack, HSBC, Bank of Queensland and NAB.



Why choose Brisbane?

Brisbane is a safe, friendly and welcoming city for international students. Brisbane is a subtropical paradise where Queenslanders enjoy the fabulous relaxed lifestyle and numerous outdoor activities.

About Brisbane:

- ✿ In January 2014, the Lonely Planet proclaimed Brisbane the 'coolest city in Australia'.
- ✿ The average daytime temperatures are 29 degrees in summer and 21 degrees in winter.
- ✿ Brisbane is an outdoor city. The great weather allows a high quality of life.
- ✿ Brisbane has an amazing outdoor lifestyle with walking and cycle paths to explore the river, numerous parks and gardens.
- ✿ It is a stress-free and welcoming city with friendly people.
- ✿ Brisbane has the fastest growing employment rate in a capital city in Australia and offers a wide range of opportunities.
- ✿ It is a world class city with many universities and colleges. Brisbane also has its own artificial beach right in the middle of the city.
- ✿ Brisbane is the cultural capital of Queensland. The Queensland Cultural Centre is located in South Bank and hosts many world-class exhibitions. There are also many large-scale festivals all year around.
- ✿ The city has an exciting nightlife with pubs, clubs and music venues open until late.
- ✿ Brisbane has three major universities University of Queensland (UQ), Queensland University of Technology (QUT) and Griffith University making it a great student city.
- ✿ Great starting point to visit Australian attractions such as Fraser Island, Moreton Island and the Great Barrier Reef.
- ✿ Cosmopolitan city, ideal for students looking for a cheaper option than Sydney and Melbourne.



Cost of living in Brisbane

Brisbane was ranked as one of Australia's most affordable cities by the Mercer Worldwide Cost of Living Survey 2010. We recommend that students budget \$400 per week for accommodation, food, telephone, transport and entertainment. However, remember that this could be more or less depending their spending habits.

Public Transport

Brisbane's public transport system, called Translink, is a network of trains, ferries (CityCats) and buses. Students can use a Go Card to travel in Brisbane and on the Gold Coast. Prices vary according to the time of travel and the number of zones they travel across.

- Buy a Go Card: \$10 (\$5 will be refunded when students give their GoCard back to Translink at the end of their stay in Brisbane).

- Students can look for their travel journey on www.translink.com.au/journeyplanner

Zones	Go Card Peak Hour	Go Card Off Peak*
1	\$3.37	\$2.70
2	\$4.11	\$3.29
3	\$6.28	\$5.02

Prices as of January 2020

**Trips in off-peak hour (from 8.30 am to 3.30pm and after 7.00pm on weekdays, all weekends and all public holidays)*
After making 8 paid go card journeys on the same card in a week (Monday to Sunday) then it costs half price travel on every additional trip made during the rest of the week (until Sunday night).

Please note that ELICOS (English Language students) students are not eligible to receive a travel concession card in Queensland. Students will have to purchase an Adult transportation card.

Phone and SIM card plans

Students can buy an Australian Sim Card (from \$2 to \$30 depending on the type of SIM Card needed) to use with their own phone from all Australian phone and Internet providers (Telstra, Optus, Virgin Mobile & Vodaphone). They can then recharge this card with prepaid plans from \$20 per month, according to their needs in terms of credit (national or international calls & texts, Internet data etc.)

Price guide for food (as of January 2020)

Loaf of bread: \$2.50 --- **Milk:** \$1.5 per litre --- **Rice:** \$2.50 per kilo
Apples: \$4.63 per kilo --- **Tomatoes:** \$5.65 per kilo --- **Eggs (6):** \$2.86 --- **Water (1.5L bottle):** \$1.84

Price guide for general items*

Magazine: \$6.50
Coffee (regular size): \$4.92 (small size): \$3.6
Pack of cigarettes: \$30
Movie ticket: from \$8.50 to \$25 depending on the type of cinema and time of viewing (weekday or weekends).
Gym membership: from \$13.50* per week, *conditions apply.
Dinner at the restaurant/ main meal: \$18-\$30
Drinks: Beer \$7 – Glass of wine \$8.5 – Cocktail \$15
Combo meal at Mc Donald's: \$11
Rent a car: from \$30 to \$100 per day, depending on age (under or over 25 years old) and type of car (manual/automatic and number of passengers).

*Prices as of January 2020



Things to do in Brisbane

Brisbane is a busy cosmopolitan city that offers a great number of activities and places to visit. Brisbane is surrounded by tourist activities such as the Lone Pine Koala Sanctuary, markets, rock-climbing, jet skiing, museums and galleries, festivals, theme parks and beautiful beaches.

Activities in Brisbane



Lone Pine Koala Sanctuary



Riverside markets



Mount Coot-tha



Shopping



South Bank Parklands Beach



Exciting Night Life

Activities around Brisbane



Moreton Island



Mt Tambourine



Fraser Island

Brisbane Events Calendar



Buddha Birth Day Festival (April) - The Buddha Birth Day Festival is the celebration for the birthday of Gautama Buddha and is known as one of Queensland's most prestigious cultural events. 200,000 visitors are coming along and enjoying the multiple Asian cultures and is now recognized as the largest annual Buddhist Birth Day Festival in the world.



Paniyiri (May) - The famous Paniyiri Festival, the signature celebration of all things Greek, will bring the tastes, sounds, dance, atmosphere, laughter and flavours of Greece to Brisbane.



NAIDOC Week (July) - NAIDOC celebrations are held to celebrate the history, culture and achievements of Aboriginal and Torres Strait Islander peoples. This week provides a great opportunity to participate in a range of activities and discover a new culture.



International Film Festival (August) - it doesn't matter what you are into, this festival has something for everyone as it is. Featuring films from all over the world the International Film Festival is very popular.



EKKA Royal Queensland Show (August) -The Ekka is Queensland largest annual event with recent shows drawing more than 400,000 visitors. Held over 10 days, Brisbane's biggest cultural festival brings a great variety of talent, culture, food and entertainment to the city.



Brisbane Festival (September) - The Brisbane Festival is an annual arts festival. For three weeks the festival features classical and contemporary music, theatre, dance, comedy, opera, circus and major public events like Sunsuper Riverfire.



Oktoberfest (October) - A traditional German Festival with German food, German Beers on tap, German dancing and singing as well as entertainment from other cultures.



Woodford Folk Festival (December) - The Woodford Folk Festival is an event held over six days and six nights. It presents more than 2000 performers and 400 events.

There are many more festivals during the year. For more information visit www.visitbrisbane.com.au

Langports Gold Coast School

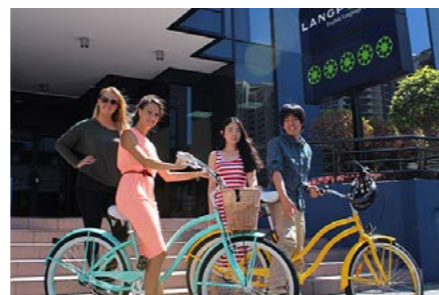
CRICOS Code: 02630J

Langports' school is a 2 level stand-alone, modern building located in the heart of Surfers Paradise. The school is located only 500 metres away from the beach. Students will enjoy the quality of life on the Gold Coast while studying English.



Key points:

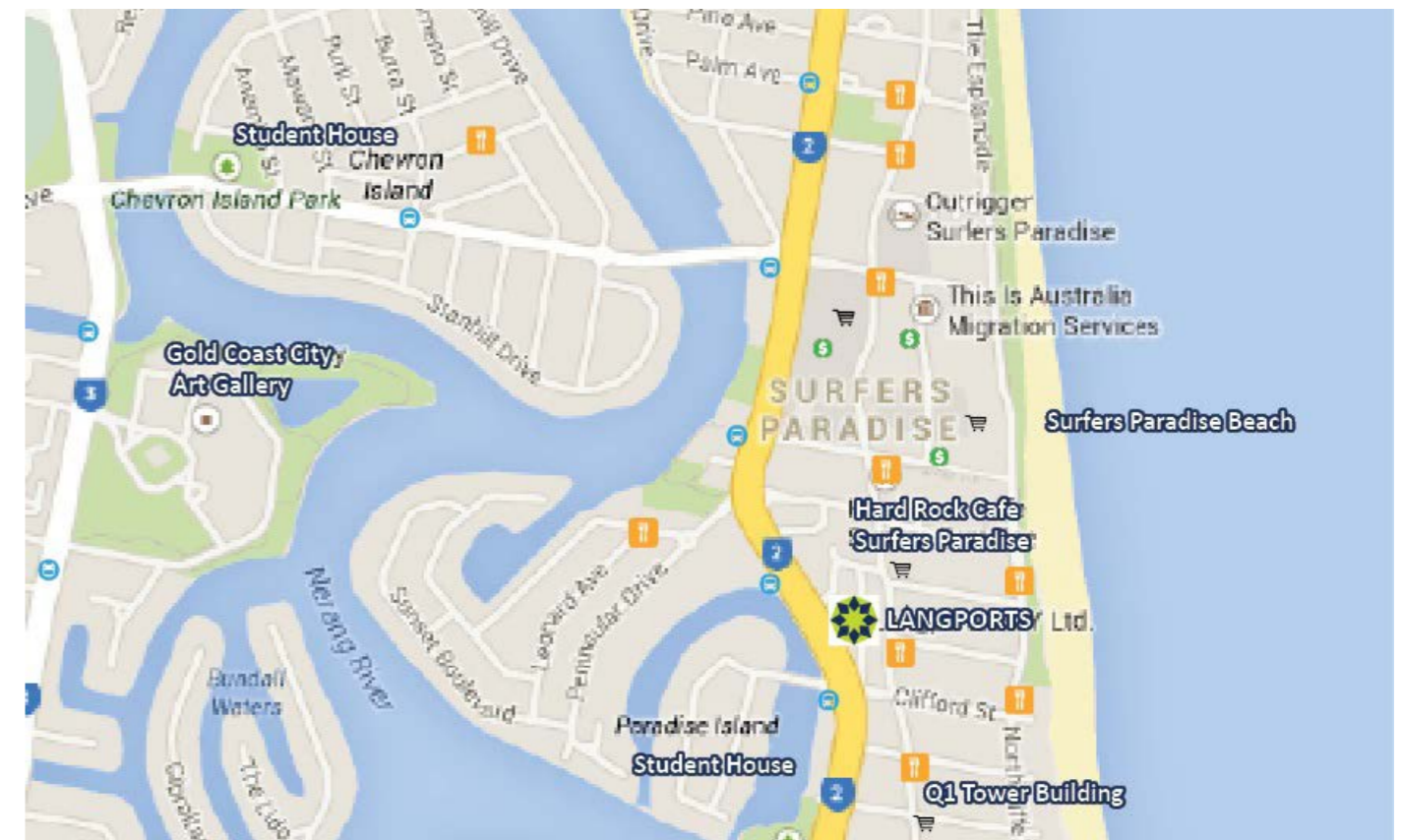
- ☀ Central Gold Coast location in the heart of Surfers Paradise
- ☀ Stand-alone, 2 level, city school with 21 modern classrooms, a kitchen, approximately 40 computers & free wifi, outdoor balcony & garden with barbeque, student lounges, recreational area with games and a library
- ☀ Major shops, restaurants and entertainment, all just a short walk from the campus
- ☀ Convenient access to public transport (bus and light rail)
- ☀ Inter-schools transfers available (conditions apply)
- ☀ Maximum 300 students - Average 260 students
- ☀ 2 minute walk from one of the most famous surf beaches in Australia
- ☀ Surfboards and bicycles available for hire



Langports Gold Coast School - Surroundings

You can now check out Langports Brisbane, Gold Coast & Sydney schools from your computer or phone!

<http://virtualtour.langports.com/>



AROUND THE SCHOOL



Restaurants

There are many options available around the campus and in Surfers Paradise. Students will be able to purchase their lunch and morning break snacks from cafes, bakeries, sandwich bars, restaurants, food courts or convenience stores.



Public transport

The public transport system on the Gold Coast is well developed. Students can travel by buses and trams. The campus is only located 250 meters from the bus and tram (light rail) stations. Within 2 minutes, students are on the Gold Coast Highway, the road used by many different buses. During peak hours, there are buses and trams every 10 minutes.



Supermarkets

There are a lot of supermarkets within short distances from the campus where students can buy their lunch or do their grocery shopping for the week. Supermarkets such as IGA, Night Owl, 7 Eleven and Woolworths can be found.



Banks

There are several banks just around the campus where students will be able to open a bank account and withdraw money. The most popular banks are Commonwealth Bank, Westpac, ANZ and NAB.



Why choose the Gold Coast?

The Gold Coast is a safe and famous city with 70 kilometers of sandy, surf beaches. Students will discover the exciting night life, great shopping, and lush rainforests just moments away in the beautiful Gold Coast hinterland.

About the Gold Coast:

- ✿ Australia's number 1 holiday destination.
- ✿ The average daytime temperatures are 29 degrees in summer and 21 degrees in winter.
- ✿ The Gold Coast is a beach city. The great weather allows people to surf or swim all year around.
- ✿ It is a stress-free and welcoming city with friendly people.
- ✿ Water sports such as surfing, wind-surfing, kite-surfing and sailing are easily available.
- ✿ The Gold Coast is renowned for its vibrant nightlife with many pubs, clubs and music venues open until late.
- ✿ A fun city with world famous theme parks such as SeaWorld, Dreamworld and Movieworld all close by.
- ✿ The Gold Coast has the largest subtropical rainforest in the world and more than 100,000ha of nature reserves and World Heritage sites.
- ✿ Great shopping centres with large discount outlets such as Harbour Town.
- ✿ Close to many "must visit" Australian attractions such as Byron Bay, Stradbroke Island, Moreton Island and the Great Barrier Reef.
- ✿ High quality universities and vocational colleges offering opportunities for further study.
- ✿ An ideal beach destination for students looking for a smaller but dynamic city in Australia with an exceptional lifestyle.



Cost of living on the Gold Coast

The Gold Coast is ranked as one of Australia's most affordable cities. We recommend that students budget \$350 per week for accommodation, food, telephone, transport and entertainment. However, remember that this could be more or less depending on spending habits.

Public Transport

The Gold Coast public transport system, called Translink, is a network of trains, buses and light rails. Students can use a Go Card to travel on the Gold Coast and in Brisbane. Prices vary according to the time of travel and the number of zones they travel across.

- Buy a Go Card: \$10 (\$5 will be refunded when students give their GoCard back to Translink at the end of their stay on the Gold Coast).
- Students can find their travel journey on www.translink.com.au/journeyplanner
- Langports is located in zone 5. Our Student Houses and Homestay families are located in zones 5.

Zones	Go Card Peak Hour	Go Card Off Peak*
Travel across 1 zone	\$3.37	\$2.70
Travel across 2 zone	\$4.11	\$3.29
Travel across 3 zone	\$6.28	\$5.02

Prices as of January 2020

*Trips in off-peak hour (from 8.30 am to 3.30pm and after 7.00pm on weekdays, all weekends and all public holidays)

After making 8 paid go card journeys on the same card in a week (Monday to Sunday) then it costs half price travel on every additional trip made during the rest of the week (until Sunday night).

Please note that ELICOS (English Language students) students are not eligible to receive a travel concession card in Queensland. Students will have to purchase an Adult transportation card.

Phone and SIM card plans

Students can buy an Australian Sim Card (from \$2 to \$30 depending on the type of SIM Card needed) to use with their own phone from all Australian phone and Internet providers (Telstra, Optus, Virgin Mobile & Vodaphone). They can then recharge this card with prepaid plans from \$20 per month, according to their needs in terms of credit (national or international calls & texts, Internet data etc.)

Price guide for food (as of January 2020)

Loaf of bread: \$2.50 --- **Milk:** \$1.32 per liter --- **Rice:** \$2.88 per kilo
Apples: \$3.88 per kilo --- **Tomatoes:** \$5.26 per kilo --- **Eggs (6):** \$2.50 --- **Water (1.5L bottle):** \$1.63

Price guide for general items*

Magazine: \$6.50
Coffee (regular size): \$4.33
Pack of cigarettes: \$30
Movie ticket: from \$14.50 depending on the type of cinema and time of viewing (weekday or weekends).
Gym membership: from \$13.50
Dinner at the restaurant/ main meal: \$16-\$27
Drinks: Beer \$7- Glass of wine \$8.5 - Cocktail \$16
Combo meal at Mc Donald's: \$10
Rent a car: from \$30 to \$100 per day, depending on age (under or over 25 years old) and type of car (manual/automatic and number of passengers).



*Prices as of January 2020



Things to do on the Gold Coast

The Gold Coast is one of the most exciting tourist destinations in the world. Students will appreciate all the beautiful beaches along the Gold Coast but also Stradbroke Island, night markets in Surfers Paradise and famous theme parks.

Activities on the Gold Coast



Currumbin Wildlife Sanctuary



Q1 Tower



Surf Lesson



Shopping



Theme Parks



Exciting Night Life

Activities around the Gold Coast



Byron Bay



**Natural Arch
Springbrook National Park**



Stradbroke Island

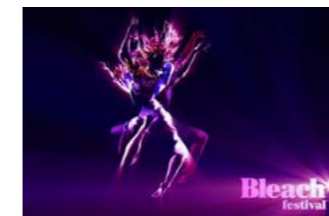
Gold Coast Events Calendar



Magic Millions Horse Ricing Carnival (January) - Dress up and enjoy the exciting atmosphere at this famous horse racing carnival. Every year, in the second week of January, the glamorous Gold Coast is the venue for the Magic Millions Yearling Sales and ten days of Carnival.



Quicksilver Pro competition (February) - The Quicksilver Pro is a world famous surf competition held each year in Coolangatta, South of the Gold Coast. The Quicksilver Pro showcases the sport's top athletes competing in some of the best waves on the ASP World Tour.



Bleach* Festival (March to April) - During this time in a-whole-city of the Gold Coast, their local signature arts and culture are exhibited. The students can explore the Gold Coast while enjoying the festival.



Blues on Broadbeach (May) - Soak up the relaxed atmosphere and great music at one of the Gold Coast's beautiful beaches right next to Surfers Paradise.



Winter Sun Festival (June) - Winter Sun is Australia's leading annual Retro Nostalgia Festival. Featuring over 1000 Hot Rods, Custom and Classic Cars, more than 100 bands and performers, dancing, movies, street parade and competitions.



NAIDOC Week (July) - NAIDOC celebrations are held to celebrate the history, culture and achievements of Aboriginal and Torres Strait Islander people. This week provides a great opportunity to participate in a range of activities and discover a new culture.



Gold Coast Show (August) - The Gold Coast show is the biggest community event on the Gold Coast. The show includes a number of competitions and exhibitions perfect for students to take part and enjoy.



V8 Racecars (October) - It's a race, a party, an eye-ful and an ear-ful. Race Cars scorching through bends and screaming down the straights.

There are many more festivals during the year. For more information www.visitgoldcoast.com

Langports' school is a 3 level stand-alone, modern building located in Darling Harbour. Students will enjoy studying English in the most iconic city of Australia.



Key points:

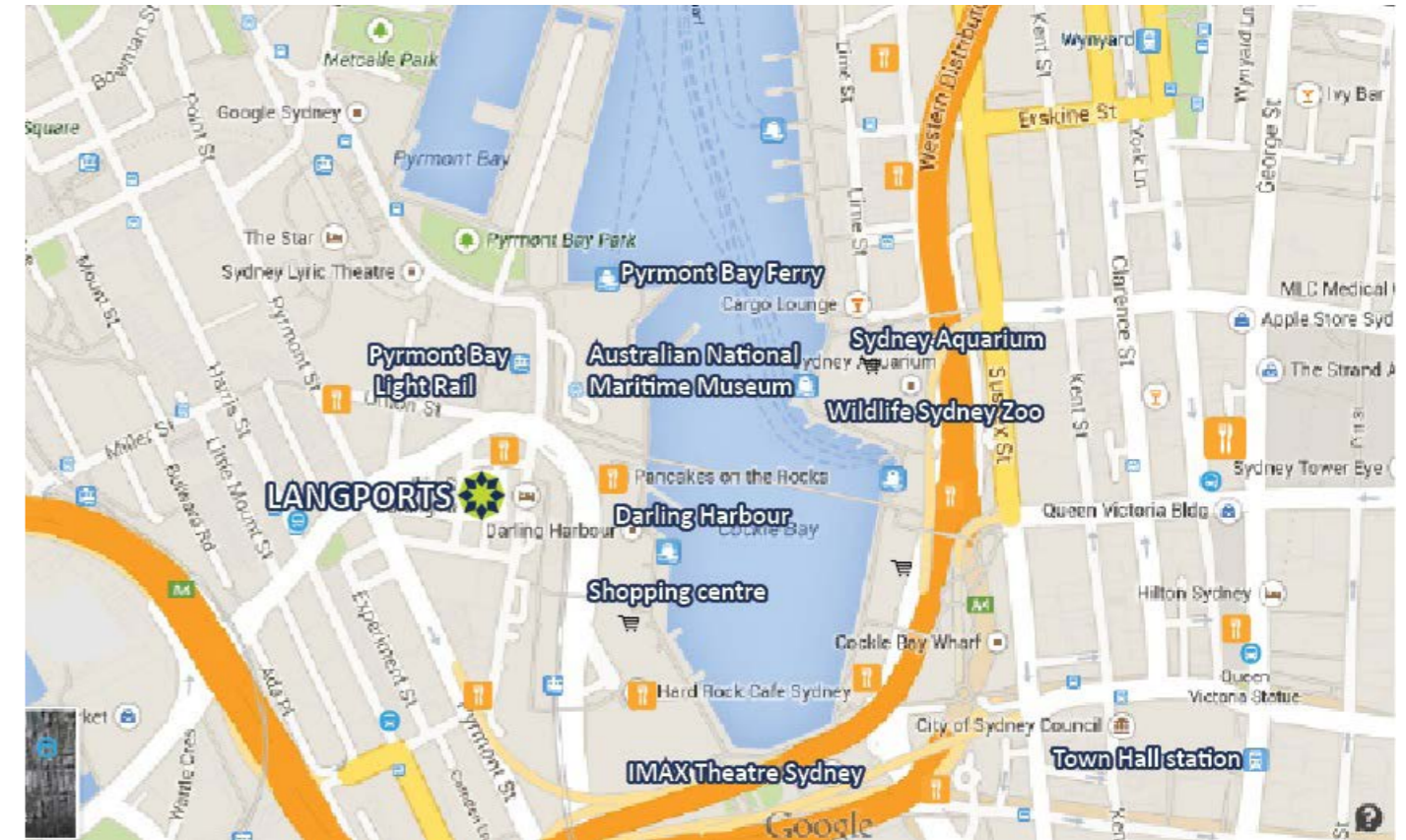
- ✿ The only English school in Darling Harbour, a vibrant area with cafes, bars and a lively youth culture
- ✿ Newly refurbished stand-alone, 3 level, city campus with 23 modern classrooms (after stage 2 and 24 classrooms after the final stage) , a new kitchen, computers & free wifi, students lounges and a recreational area with games and a library
- ✿ Fantastic location close to major shops, restaurants and entertainment just 200 meters from the campus and convenient to public transport (bus, light rail & ferry)
- ✿ Inter-schools transfers available (conditions apply)
- ✿ Maximum 320 students - Average 265
- ✿ A 2 minute walk to Darling Harbour Bridge and only a 10 minute walk to Sydney City Centre
- ✿ Sydney Aquarium and Wildlife Sydney Zoo only a 5 minute walk from the campus

*Langports Sydney is the trading name of the Doris Woodfine Foundation. It is a Not for Profit company and registered charity. All of its proceeds are donated to support the education of disadvantaged children. Langports Sydney is managed under agreement by Langports Pty Ltd.



You can now check out Langports Brisbane, Gold Coast & Sydney schools from your computer or phone!

<http://virtualtour.langports.com/>



AROUND THE SCHOOL



Restaurants

There are many options within few minutes walk from the campus. Students will be able to purchase their lunch and morning break snacks from cafes, bakeries, sandwich bars, restaurants, food courts or convenience stores.



Public transport

The public transport system in Sydney is very well developed. Students can travel by bus, train ferries or light rail. The campus is located only 400 meters from bus, light rail and ferry stations. Town Hall Station (Sydney's busiest station) is only a 10 minute walk from the campus.



Supermarkets

There are many supermarkets within short distances from the campus where students can buy their lunch or do their grocery shopping for the week. Supermarkets such as IGA, Night Owl, 7 Eleven and Coles can be found.



Banks

There are several banks just around the campus where students will be able to open a bank account and withdraw money. The most popular banks are Commonwealth Bank, Westpac, ANZ and NAB.



Why choose Sydney?

Sydney is often chosen by international students as their number 1 destination in Australia. It is a safe and friendly city with many outdoor and cultural activities available.

About Sydney:

- ✿ An international and cosmopolitan lifestyle with a population of 4.6 million
- ✿ Australia's most iconic city, home of the famous Harbour Bridge, Opera House & Sydney Harbour
- ✿ Average daytime temperature in summer 25°C and winter daytime temperature 16°C
- ✿ A dynamic cultural centre, with many fine and internationally known museums, galleries and art spaces
- ✿ A host to different festivals and some of Australia's largest social and cultural events
- ✿ Australia's famous Blue Mountains located 2 hours from Sydney
- ✿ Over 100 white sandy beaches surround Sydney, including the famous Bondi and Manly beaches
- ✿ Water sports, such as surfing, windsurfing, kite-surfing and sailing are all easily available
- ✿ Diverse shopping and vibrant nightlife
- ✿ Venue for many major international events including the world famous New Years Eve fireworks display
- ✿ The business, finance and education centre of New South Wales
- ✿ The full range of universities and specialised vocational colleges offer opportunities for further study



Cost of living in Sydney

We recommend that students budget \$500 per week for accommodation, food, telephone, transport and entertainment. However, remember that this could be more or less depending on spending habits.

Public Transport

The Sydney public transport system is a network of trains, buses, ferries and light rails. Students can use an Opal card to travel in Sydney. Prices vary according to the time of travel, the number of zones they travel across and the type of transport they use. Buy an Opal Card and find your travel journey on www.opal.com.au



Train

Up to 10km – \$2.52 off peak - \$3.61 peak hour*
 10-20km - \$3.13 off peak - \$4.48 peak hour
 20 – 35km- \$3.60 off peak - \$5.15 peak hour

Bus

Up to 3km - \$2.24
 3-8km - \$3.73
 More than 8km - \$4.80

Ferry

Up to 9km - \$6.12
 More than 9km - \$7.65

Prices as of January 2020

**Trips in peak hours are from 7.00am to 9.00am and from 4.00pm to 6.30pm on weekdays.*

Adult Opal card holders get a \$2 discount for every transfer between modes (train, ferry...) as part of one journey within 60 min from the last tap off.

The more you travel with an Opal card the more you can benefit. And these benefits affect how your fare is calculated. For example, if you've reached your Weekly Travel Cap, your fares for the rest of the week are half-price.

Please note that ELICOS (English Language students) students are not eligible to receive a travel concession card in New South Wales. Students will have to purchase an Adult transportation card.

Phone and SIM card plans

Students can buy an Australian Sim Card (from \$2 to \$30 depending on the type of SIM Card needed) to use with their own phone from all Australian phone and Internet providers (Telstra, Optus, Virgin Mobile & Vodaphone). They can then recharge this card with prepaid plans from \$20 per month, according to their needs in terms of credit (national or international calls & texts, Internet data etc.)

Price guide for food (as of January 2020)

Loaf of bread: \$3.80 --- **Milk:** \$1.5 per liter --- **Rice:** \$2.80 per kilo
Apples: \$4.61 per kilo --- **Tomatoes:** \$5.97 per kilo --- **Eggs (6):** \$3.5 --- **Water (1.5L bottle):** \$2.6

Price guide for general items*

- Magazine:** \$6.50
- Coffee** (small size): \$3.50, (regular size): \$4.30
- Pack of cigarettes:** \$33
- Movie ticket:** from \$18.00 depending on the type of cinema and time of viewing (weekday or weekends).
- Sydney Aquarium** – From \$29.4 (online) - **Taronga zoo** – From \$46
- Gym membership** – From \$13.95
- Dinner at an inexpensive restaurant/ main meal:** \$15
- Main meal at a mid-range restaurant:** \$30
- Drinks:** Beer \$8 – Glass of wine \$9 – Cocktail \$17
- Combo meal at Mc Donald's:** \$11
- Rent a car:** from \$30 to \$100 per day, depending on age (under or over 25 years old) and type of car (manual/automatic and number of passengers).



*Prices as of January 2020

Things to do in Sydney

Activities in Sydney



Sydney Aquarium



Sydney Tower



Harbour Bridge Climb



Bondi Beach Walk



Dynamic Night Life



Taronga Zoo

Activities around Sydney



The Blue Mountains



Visit Beaches & Surf Lesson



Hunter Valley

Sydney Events Calendar



The Lunar New Year - Chinese New Year (January)

Enjoy delicious food, music & entertainment at the Chinese New Year Markets. Watch the Twilight parade illuminate the City's streets with a procession of colourful floats from different community groups.



Sydney Festival (January)

In Sydney festival, over 450 performances and 150 events are yearly provided by over 1,000 artists at more than 46 venues across theatre, dance, music, circus and art.



Vivid Festival, light shows and music - (June)

Vivid Sydney is a unique annual event of light, music and ideas, featuring many of the world's most important creative industry forums, a mesmerising free public exhibition of outdoor lighting sculptures and installations. In 2014 there were 56 installations brought to life by 140 artists from 15 different countries.



Manly Food and Wine Festival - (June)

The Food, Wine and Sustainability Festival is a major community event and takes place in the heart of Manly Beach. Join up to 15,000 food and wine enthusiasts and indulge in delicious local food perfectly matched with fine wines from Australian wineries.



Winter Magic on Bondi Beach - (From July to October)

The Winter Festival is Australia's largest winter event, featuring open-air ice-skating with traditional culinary delights and captivating entertainment. The Winter Festival is held in Darling Harbour and Bondi beach.



Sculpture by the Sea in Bondi Beach (November)

Sculpture by the Sea is a yearly event, held for three weeks at Bondi Beach. The Bondi to Coogee walk turns into an open air cliff top sculpture gallery. Around 100 sculptures are displayed from Bondi Beach to Tamarama Beach.



New Year's Eve fireworks - (31st December)

Watching the spectacular midnight fireworks display is the perfect way to see in The New Year. If students really want to be at the centre of all the action, the Sydney Opera House is a great place to be, however it will be really crowded and students should get there VERY early in the morning to get a good spot. Anywhere on the harbour where you can see the Harbour Bridge & Opera House will be a great place to watch this. There are different parties and events around Sydney on NYE – so it's definitely a great place to be!

There are many more festivals during the year. For more information www.sydney.com/events

Study English & Experience Australia



Study in up to 3 locations

and only pay:
- 1 enrolment fee

- 1 accommodation placement fee

- Receive up to \$200 in transfer vouchers

*Conditions apply

- ✿ High quality tuition to improve your English level
- ✿ Highly experienced and qualified teachers
- ✿ Personalised learning programs
- ✿ Voted best English school in Australia for 5 years 2011-2015
Voted by students on EducationStars.com
- ✿ Classmates from all over the world (56 nationalities in 2017)
- ✿ Friendly homestay families or student houses

Conditions:

Please note that some courses might differ from a campus to another. Transfer dates are subject to the student's study plan.
Transfer voucher: 1 X \$AUD100 voucher to move between 2 campuses and 2X\$AUD100 vouchers to move between our 3 schools. Maximum of 2 vouchers per student. To be entitled to receive this voucher, students must study a minimum of 4 weeks in each school.



It is Langports policy to assist its students to make multi-schools enrolments in advance or to transfer their enrolment when in Australia between any of the 3 Langports schools though the provision of a \$100 travel voucher per transfer to help with the inter-schools travel costs.

If the initial enrolment is multi-campus, then the following conditions apply:

- ✿ Maximum of 2 vouchers per student. 1 voucher to move between 2 schools and 2 vouchers to move between our 3 schools.
- ✿ Minimum period of study at each school is 4 weeks.

If the transfer occurs when the student is actually at Langports then the following, additional conditions apply:

- ✿ For some transfers, fee differences between the schools will apply – additional charges if going from Brisbane or Gold Coast to Sydney and a refund will apply if going from Sydney to Brisbane or Gold Coast.
- ✿ There must be a minimum of a 4 week enrolment extension in each new school in order to receive a travel voucher.
- ✿ Transfers can only be processed and confirmed if the student has no outstanding fees.
- ✿ Transfers can only be made if there is space in the new location.
- ✿ Students must have an overall attendance rate of 80% or higher to be considered for a transfer.
- ✿ The minimum period of study at subsequent schools will be 4 weeks.
- ✿ No enrolment fee will be charged .
- ✿ Any accommodation placement fee will be 50% of the normal fee if Langports arranged accommodation is required and there has been no extension of enrolment weeks – minimum weeks. If the student extends their homestay for 4 weeks or more, the accommodation placement fee won't apply.
- ✿ Fee differences on published tuition fees between the schools will apply – additional charges if going from Brisbane or Gold Coast to Sydney and a refund will apply if going from Sydney to Brisbane or Gold Coast. If the student enrolled at Langports with a promotion that was only applicable at one school, then they will need to pay the difference in fees between the promotional rate and the standard rate for that country for the remainder of their enrolment in the new school. If the student has enrolled under last year's prices but now wants to transfer to another school then the current year's prices (published or market price) will apply.
- ✿ If a student was given a promotion in one school and then are transferring but the promotion doesn't apply in the new campus, they must pay the difference.
- ✿ If a student completes the transfer paperwork and the transfer is processed, but then the student changes their mind and stays at the original school a processing fee of \$100 will be charged.
- ✿ If a student undertakes an inter-school transfer but then wishes to return to the original school without extending their enrolment, then they will incur an admin charge of \$100 and an accommodation placement fee will apply if applicable.
- ✿ Where a student is Under 18 and requests a inter-school transfer this can only be considered after written parental approval is received. Principals of both schools would need to be consulted and a new welfare letter will be needed.
- ✿ The cost of moving between schools a second time will be incurred 100% by the student.

Activities at Langports

Langports' Recreation and Community Engagement Officers encourage students to participate in a diverse and extensive program made up of sports, cultural, tourism and social events run at each school.

The program consists of:

- Full day excursions every Saturday and/or Sunday
- Weekend overnight excursions
- Job Help and travel information sessions

Each year, Langports offers more than 200 fun and exciting activities to help its students make the most out of their Australian experience! From discovering Fraser Island, playing soccer, climbing the Harbour Bridge to going to Movie World, there surely is the right activity for them! They can check the next activities organised at each school by downloading our Activities Calendars below.

Prices vary depending on the type of activities

Sample program

Activities NOVEMBER Brisbane Campus						
MONDAY	TUESDAY	WEDNESDAY	THURSDAY	FRIDAY	SATURDAY	SUNDAY
		1 BEER TASTING	2 PUB NIGHT	3 LONE PINE	4 ISLAND PARTY	5 Please ask the Activities Officer for information on local tours and events
6	7 MELBOURNE CUP	8 PREMIER LEAGUE	9 PUB NIGHT	10 MOVIE &	11 FRASER	12 ISLAND
13	14 PREMIER LEAGUE	15 Celebrate International Day!	16 PUB NIGHT	17 LEARN CRICKET	18 WET 'N' WILD	19 RAINFOREST
20	21 FIFA	22 PING PONG	23 BOARD GAMES	24 PUB NIGHT	25 Q1 GOLD COAST	26 SKYDIVING
27	28 PREMIER LEAGUE	29 MUSIC	30 CHRISTMAS PARTY!			

LANGPORTS

Visit our website www.langports.com/students to have access to the current activities calendar for each school.

Langports App for iPhone & Android

Students with an iPhone or Android will be able to download the Langports App from the Apple Store or Google Play. This application is free.

Thanks to our app, students will be able to:

- View their class timetables, rooms, teachers and their level of attendance
- Get information about our activities and book them
- Read our blog and follow our social networks
- Become familiar with Brisbane, Gold Coast & Sydney cities through our map feature
- Take photos with frames to share



Keep Langports in your pocket!

Current Langports students can access a wide variety of information on the student page on our website as well as on the Langports' iPhone & Android App.

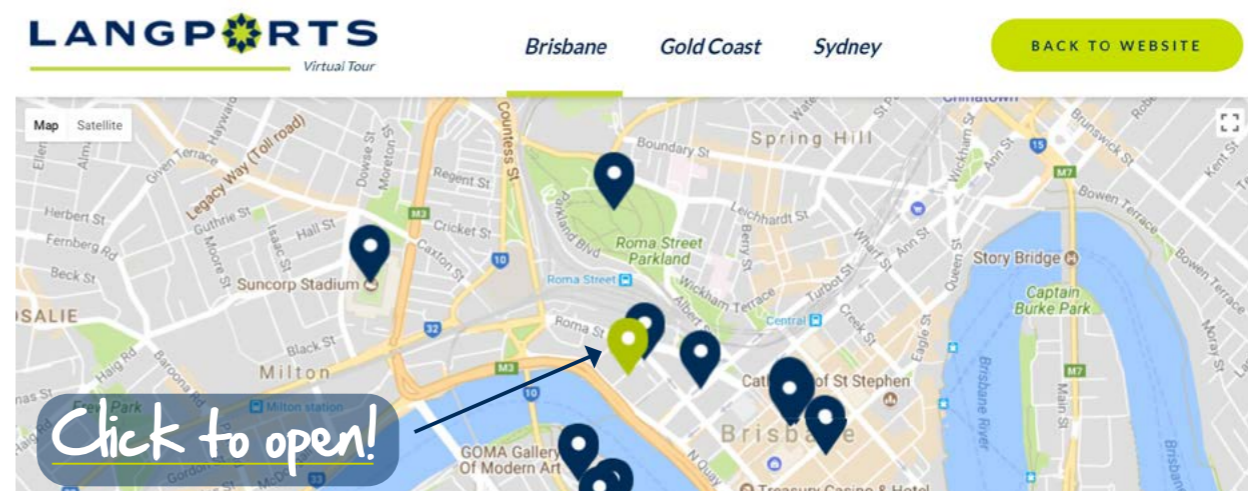
Download our App now!



Langports Virtual Tours

Langports prepared this just for you! Check this link <http://virtualtour.langports.com> to access a virtual tour of each of our schools, their location and close points of interests, such as where to buy your public transport card, nearest Post Office, information center and medical center or where to go shopping.

You can now check out Langports Brisbane, Gold Coast & Sydney campuses from your computer or phone!





LANGPORTS

Policies

Policies and Procedures - Cancellations and Refund

Cancellation & Refund Policy

Clause 1: In the event of a cancellation, no refund will be made on the enrolment fee or accommodation placement fee.

Clause 2: All notifications of course cancellations and requests for a refund must be made to the Principal in writing. A written response will be provided in writing within 5 working days. Where a refund is granted, this will be paid within 4 weeks of the date of the notice of cancellation to the person or organization who paid the fees in the first place.

Clause 3: A study program at Langports may consist of one or more separate courses at one or more of Langports' schools. If a study program consists of 26 weeks or more of UFO English, the program will be split into 2 study periods of 50% of the total study program for the purposes of payment, however, student can pay 100% of their tuition fees in advance if they so choose. Requests for refunds due to cancellation will only be considered in the context of the whole study program and not for individual courses, schools or study periods.

Study Cancellation:

- ✿ Cancellations received more than 4 weeks before the course commencement will normally receive a full refund of fees, subject to clause 1.
- ✿ Cancellations received less than 4 weeks before start of course will normally receive a refund of fees less a cancellation charge equal to 4 weeks of the current published tuition fee.
- ✿ Cancellations received after course commencement will not be eligible for a refund of fees.
- ✿ A full refund of fees, subject to clause 1, will be made if a visa application has been denied (proof of visa rejection from the Australian immigration authorities is required within 2 weeks from the date of notice)
- ✿ A \$25 administration fee will apply to all refunds and a further \$25 administration fee will apply to any refunds made through international bank transfers (total \$50).

Accommodation Cancellation:

- ✿ Cancellations received more than 4 weeks before course commencement will normally receive a full refund of fees, subject to clause 1.
- ✿ Cancellations received less than 4 weeks before course commencement will incur a cancellation charge equal to 2 weeks rent.
- ✿ Minimum of 4 weeks homestay, unless the course is 1,2 or 3 weeks. If a student wishes to cancel their homestay within this 4 week period, no refund will be given. To cancel homestay a minimum of 2 weeks' notice must be given.
- ✿ After studies have commenced, 2 weeks' notice must be given or a cancellation charge equal to 2 weeks rent will apply. Any unused accommodation fees will be refunded to the student within 2 weeks of submitting a refund request form.
- ✿ If you are asked to leave the homestay for any valid reason, for example due to unacceptable behaviour such as having someone stay over without prior permission, a cancellation payment of two weeks' notice will be deducted from any refund due, in lieu of two weeks' notice.
- ✿ Student accommodation cancellations will be advised on the letter of offer.

Airport Greeting:

- ✿ No refund will be made if the student fails to notify Langports of their flight details or any change of details less than 48 hours before arrival.

Policies and Procedures - Cancellations and Refund

Cancellation of Course by Langports

- ✿ If Langports cancels a course, you will be offered a refund of all the course money you have paid to date. The refund will be paid to you within 2 weeks of the course cancellation. Alternatively, you may be offered enrolment in an alternative course at Langports at no extra cost to you. You have the right to choose whether you would prefer a full refund of course fees, or to accept a place in another course.
- ✿ If you choose placement in another course, we will ask you to sign a document to indicate that you accept the placement. If in the unlikely event that Langports ceases to operate and is unable to provide a full refund, students may be placed in an alternative course by our Tuition Assurance Scheme (TAS) English Australia at no extra cost to you.
- ✿ Finally, for student visa holders, if the English Australia TAS cannot place you in a suitable alternative course, the ESOS Assurance Fund Manager will attempt to place you in a suitable alternative course or, if this is not possible, you will be eligible for a refund as calculated by the Fund Manager.

Deferment Policy

- ✿ Students must start their course on the allocated start date unless they provide a minimum of one week's notice in writing to defer their course. If notice is less than one week or a student does not show up on the designated start date, Langports will charge one week's tuition fee and the course will not be extended by the time lost. If notice of deferment is not received within 48 hours of course commencement, the course will be cancelled. Students can only defer their start date once without penalty. Langports is required to report any student default within 5 working days if a new start date has not been confirmed and a new eCOE issued for students on a student visa.
- ✿ Students may also defer their accommodation. However, more notice must be provided by the student and/or agent. For homestay, 2 weeks' notice is required to defer without charges. Student Accommodation providers may not be able to defer bookings due to availability. If Langports is provided with at least 2 weeks' notice, we can do our best to defer the booking, but it cannot be guaranteed, nor can we guarantee to maintain the price that was originally offered. If the accommodation cannot be deferred to the same provider, the cancellation policy of the accommodation option will apply.
- ✿ Langports can only defer or temporarily suspend the enrolment of the student (on a student visa) on the grounds of:
 - a) Compassionate or compelling circumstances (for example, illness where a medical certificate states that the student is unable to attend classes); or
 - b) Misbehaviour by the studentIn the case of a student on a Student Visa Langports must
 - a) inform the student that deferring, suspending or cancelling his or her enrolment may affect his or her student visa; and
 - b) notify the Secretary of DEEWR via PRISMS as required under section 19 of the ESOS Act where the student's enrolment is deferred, temporarily suspended or cancelled.



Policies and Procedures - Student Holiday

Langports recognises the importance of students taking a holiday – defined as a break in a course that they are currently studying – if they are enrolled for an extended period of time. It is the policy of Langports to consider all requests from students for a holiday and assess them on a case by case basis in line with the following policies which apply to all students studying on a student visa: All holiday requests must be approved by the Campus Principal and no holiday request should be automatically granted without this prior approval.

- ✿ Students on a tourist visa, where the maximum period of enrolment is 13 weeks, will not normally be eligible for a holiday unless there are exceptional circumstances or where there has been a pre-agreed arrangement made at the time of enrolment, in which case two separate enrolments will be confirmed with the required break in between the two enrolments.
- ✿ Students on a working holiday visa, where the maximum period of enrolment is 17 weeks, will be eligible to cut short their course if they can provide proof of a job offer and the balance of their enrolment can be carried forward with a second enrolment or in the case where they do not have an idea of dates, a credit note valid for 12 months will be given.
- ✿ Students on a student visa should have completed 12 weeks study before they are eligible for a holiday. All students will be required to give 2 weeks' notice to break their course or they will lose 2 weeks tuition fees in lieu of this notice.
- ✿ The minimum holiday period is 1 week and the maximum period 8 weeks, depending on visa length. In very general terms the policy is 1 week of holiday for every 12 weeks of study. In cases where the student is going overseas they may be granted a longer holiday than they are entitled to at that time so long as it does not exceed 4 weeks.
- ✿ Students who want to take a holiday must apply using the Holiday Application Form (available at reception) and give a minimum of 2 weeks notice before the requested holiday is due to commence.
- ✿ Where a student has their request granted, the original finish date of their enrolment will be extended, at no cost to the student, to compensate for the holiday taken. This is called an 'Extend holiday'. If, in special circumstances, an 'Extend holiday' request is for more than 4 weeks in order to leave Australia to return home for this holiday and the student is on a student visa, they will need to apply for a visa extension in order to complete the original number of weeks enrolled.
- ✿ Where a student has their request declined, but still wishes to take the requested holiday, then a 'No Extend' holiday can be granted; i.e. the finish date of the student's enrolment will not be extended to compensate for the holiday taken and the student loses those course weeks.
- ✿ Students studying for 12 weeks or less will not normally be granted a holiday of any kind, however, under exceptional circumstances beyond the control of the student e.g. medical, bereavement, family crisis they may be granted an 'Extend holiday'. Documentary evidence will need to be provided by the student with their written request.
- ✿ Students taking an 'Extend' or a 'No Extend' holiday will not have their absence counted as part of their attendance record for the duration of the approved holiday period
All students are given this information in their student hand book.

Policies and Procedures - Re-Enrolment

- ✿ Whenever students re-enrol, if they have studied at any Langports college before, they do not have to pay the enrolment fee again. There is no time limit on this condition.
- ✿ Students who commence a re-enrolment within 4 weeks of their old enrolment finishing will be charged the same rate of tuition fees that they were charged originally or the new duration rate for that period of re-enrolment, whichever is the lowest. It is important to note however that the duration of the original enrolment and that of the re-enrolment cannot be added together to create a longer duration of enrolment. If they have a break longer than 4 weeks, the current rates for tuition fees will be charged.
- ✿ Any accommodation fees that apply will always be applied at the current rate.
- ✿ If a student extends their homestay with their existing family as a result of the re-enrolment, there is no accommodation placement fee; however, if a new family has to be sourced as a result of the re-enrolment then the accommodation placement fee will apply.

At the end of their original course, students who wish to re-enrol are encouraged to re-enrol through their original agent. The original rate of commission will apply.

- ✿ Those who wish to enrol directly with Langports can do so, but the original agent will be able to claim for their normal commission amount within 6 months of the re-enrolment process date.
- ✿ Students who wish to use the services of an agent located in the city of their study, where their original agent is not, must submit their request in writing before permission to change agent is granted.
- ✿ Students are only permitted to change agents if their new agent is located in the same city as their college, their original agent is not, and they provide Langports with their reasons in writing.

This Policy has been written to encourage students to continue using the services of their Original Agent, whilst taking into account the students prerogative to choose who they wish to represent them.

Exceptions

If there is a break of more than 12 months or the student has returned to their own country and changed to a different visa, then they will be considered a new enrolment and they may choose a new agent if they wish.

Policies and Procedures - Under 18 students

It is Langports policy to accept students from the age of 16, but where students are under the age of 18, the student must stay in a Langports approved homestay family or stay with an approved guardian. If they are staying with a homestay family, please note that they must pay the under 18 family homestay rate.

Enrolments:

- ✿ Whenever students re-enrol, if they have studied at any Langports college before, they do not have to pay the enrolment fee again. There is no time limit on this condition. The re-enrolment tuition rate will be subject to current promotions and current tuition rates (it is not subject to the price originally paid by the student at the time of the first enrolment).
- ✿ Accommodation rates are always applied at the current rate. If a student extends their homestay with their existing family as a result of the re-enrolment, there is no accommodation placement fee; however, if a new family has to be sourced as a result of the re-enrolment then the accommodation placement fee will apply.
- ✿ At the end of their original course, students who wish to re-enrol are encouraged to re-enrol through their original agent. The relevant rate of commission will apply. Agents can claim commission for re-enrolments within 12 months of the re-enrolment process date.
- ✿ Students cannot change agency unless:
 - o their original agency does not have a local office (in the city they are studying in)
 - o their original agent releases them from their service
 - o they have had a break of over 12 months and are applying for a new visa.
- ✿ This Policy has been written to encourage students to continue using the services of their Original Agent, whilst taking into account the students prerogative to choose who they wish to represent them.

Homestay & Welfare:

- ✿ Under 18 students must stay in Langports homestay unless they are travelling with an immediate family member or have a family member living locally. If this is the case, please send us the details of this family member.
- ✿ Any U18 student under the guardianship of the Principal must be accommodated in an appointed Langports U18 Homestay family for the duration of their enrolment unless they turn 18 during their stay and wish to seek alternative accommodation at that time.
- ✿ Students must book & pay for the homestay for the period of study or until they turn 18 years old. Students can only arrive in their homestay family on the weekend before their course starts (Saturday or Sunday) and leave on the weekend after finishing their course (Saturday or Sunday).
- ✿ It is also a requirement that the student books a Langports airport transfer on arrival directly to their homestay. A transfer to the airport on departure will also be required unless the student is no longer U18 at the time of departure (or the homestay family volunteer to take the student to the airport).
- ✿ Under 18 students should be home from school no later than 7pm between Sunday and Thursday or 10pm Friday and Saturday nights.
- ✿ Any nights spent away from the host family must have prior permission of the Accommodation and Welfare Officer who in turn will obtain parental consent.
- ✿ Participation in any Langports organised overnight excursions, and any activities considered to be risky, eg sky diving, as deemed by the Activities Officer must also have prior parental consent for participation. Under no circumstances are Under 18's allowed to attend activities that are held in over 18 venues such as pub nights and student parties

Policies and Procedures - Agent Discounting

Langports has a strong 'no discounting policy' with all agents. If an agent is found to be discounting, strong action must be taken. The first time an agent is found to be discounting, they will be issued a written warning, the second time they will be suspended for 3 months and the third time, the contract will be terminated.

Discounting is defined as:

Selling Langports courses or services below the price set by Langports, be that market or country specific prices or Langports 'Special Promotions'. Agent discounting can be in the form of a general discount or cash back to students. However, giving extra services or items as an incentive to book is not considered discounting. Also, promoting Langports' special prices does not count as discounting.

Time frame

As the agency staff can change, the time between warnings & suspensions should be limited to 2 years. Therefore, if a warning is issued and 2 years pass before the second offence, the second offence will not be a suspension but it will count as the first offence and a warning will be issued.

Advertising

Any advertising, in whatever language, that uses the name Langports or carries the logo should have written permission from the Marketing Director or Regional Marketing Manager.

Regional Pricing

Langports offers specific prices for some markets. If you log-in to the agent website, prices for your market should be available automatically. If you are in any doubt about the prices, please contact your Regional Marketing Manager:

Asia: Shun Hayashi - shun.hayashi@langports.com

Europe: Julie Nicoli - jn@langports.com

Spain and Italy: Tiffany Marcantei - tiffany.marcantei@langports.com

Latin America: Claudia Salazar - csf@langports.com

Middle East: Anna France - alf@langports.com

TPS & Instalments

In 2012, the Australian Government implemented the TPS in order to protect students and give better security concerning pre-paid fees. Langports supports this and follows the TPS rules very carefully. Please continue reading to see how TPS can apply to your students.

TPS payments apply to students who are booking ONE same course of 26+ weeks. For example, at Langports, this would be our UFO English course (available from 1 to 70 weeks). It does not apply to closed courses, as they are all 5 to 12 week courses (less than 26 weeks).

If your student applies for multiple courses and all of them are less than 26 weeks, then the TPS does not apply (even if the combination of the different courses is equal or longer than 26 weeks).

Course / Study Program	TPS	Payment
All closed courses	Does not apply	100% of the course + other fees
1 – 25 weeks UFO English	Does not apply	100% of the course + other fees
26+ weeks UFO English	Applies to whole course	Payment 1: 50% tuition + all other fees Payment 2: 50% tuition OR 100% of the course + other fees
1-25 weeks UFO + Closed Course	Does not apply	100% of all courses + other fees
26+ weeks UFO + Closed Course	Applies to UFO course but not Closed Course	Payment 1: 50% tuition for UFO + 100% of the closed course + all other fees Payment 2: 50% tuition for UFO OR 100% of all courses + other fees

Providers are not allowed to request more than 50% of the tuition fees in advance on courses of 26 weeks or more. This means that if a student books 26+ weeks we must give them the option to pay in 2 payments.

Payment 1 must be received (with the signed copy of Enrolment Acceptance) before Langports can issue the COE. Payment 2 is due 8 weeks after the student begins their study program.

If a student wishes to pay 100% upfront, we can accept the fees, but it MUST be the student's choice.

- ✿ If they wish to pay 100% - Please ask them to "tick" the "1 invoice" option on the enrolment form.
- ✿ If they wish to pay 50% - Please ask them to "tick" the "2 invoices" option on the enrolment form.

When paying with the TPS 50/50 payments, please let us know whether you will be following up the 2nd payment for your student or whether they will pay directly to Langports. If we do not have news about the 2nd payment, we will contact the student directly in week 7 or 8 of their course.

How does commission apply?

Langports will pay commission on the tuition fees received. In the case of TPS 50/50 payments, agents can claim commission on 50% of the tuition fees on the start date. The 2nd commission payment will come after the student has paid the 2nd instalment.



Frequently Asked Questions - General information

Can students do further study once they have finished their course?

Our Directors of Studies can help students to make the right choice. We also have articulation agreements with many higher education institutions. Please check our website page www.langports.com and click on the English for Academic Purposes link for the most up-to-date list.

If students change level do they need to buy a new text book?

Students are charged a weekly materials fee. This covers their text book (one book for every 10 weeks) and any other course materials. Every 10 weeks a student is entitled to a new text book where necessary. A student may change levels within the ten weeks and in this case, if they have not written in their textbook (and the book is in good condition) they may exchange it for the new level text. If they have written in their book they have three options;

1. Buy the book for the new level
2. Pay a refundable \$50- they will be given a book which needs to be returned in good condition (no writing in the book) in order to get the \$50 back
3. Use their future text book entitlements

Is there an English Only Policy?

At Langports we believe that the best way to learn English is to use it all the time. Using English also shows respect to other students and staff. That is why students and teachers at Langports created an 'English Only Policy'. This is constantly reviewed by Langports to make sure it is working and that the students are happy.

Are Langports' teachers qualified?

Teachers must have a minimum of a university degree, plus a TESOL qualification with preference given to CELTA Diploma teachers, plus 2 years of experience with a variety of class and level types. All teachers are observed and approved prior to full-time appointment. Langports conducts regular Professional Development workshops for its teachers. Langports' teachers have an average of 9 years experience.

What should students do in an emergency?

In the case of an emergency students should contact:

Langports Brisbane: +61 499 994 733 (24 hours a day, 7 days a week)

Or in a homestay or transfer emergency +61 410 697 672 (available 8am - 9pm)

Langports Gold Coast: +61 499 994 733 (24 hours a day, 7 days a week)

Or in a homestay or transfer emergency +61 413 567 826 (available 8am - 9pm)

Langports Sydney: +61 422 428 082 (24 hours a day, 7 days a week)

Or in a homestay or transfer emergency +61 1300 76 83 80 (available 8am - 9pm)

If you/your students are unable to receive an answer, then our Operations Manager can be contacted on: +61 402 689 941.

Who can students talk to if they have a problem?

It depends on the problem. On the first day, students are given a student handbooklet with information about who they can contact. For academic problems students can talk to their teacher or the Director of Studies. Our Student Services Team are available at anytime to speak with students who are concerned about anything related to their stay in Australia.

What is our current nationality mix?

Each year, we welcome students from more than 56 different countries. We update our nationality mix monthly on our website, on each school page. You can download them by clicking on our nationality mix graphics:



Frequently Asked Questions - General Information

When do we send students' confirmation letters and homestay details?

The Accommodation Confirmation letter, Homestay Family Profile or Student House details and Transfer Confirmation letter (if applicable) will be sent to you around 3 weeks before arrival, after we have received the student's travel details and payment.

Do you offer any help to students looking for a job while in Australia?

At each school, we organise free Job Help sessions and workshops to help students find an evening or weekend job. We help them apply for their Tax File number, register for the RSA (Responsible Service of Alcohol) course, prepare their resumes and cover letter and give them advice about when and where to look for a student job. Please note that we do not guarantee any job placement.

Workshops include: Subject to availability

Extension English (L2+) – This workshop is split into two levels (Level 2 & 3, Levels 4 and above) and assists students with completing homework and extra work activities. The focus is on creating a collaborative study environment where students help each other under the guidance of the teacher.

English for Work in Australia (L2+) – A 5-week workshop for students interested in working in Australia. This includes learning about applying for a tax file number, a bank account and searching for a job. It also shows how to write a Resume and focuses on practicing interview questions.

Aussie English (L3+) – A 5-week course looking at vocabulary, idioms and slang in an Australian context. It includes authentic Australian listening practice and every day Australian language.

Exam Techniques and Tips (L4+) – A 5-week workshop for Level 4 and above students helping them understand the IELTS, TOEIC & Cambridge exams. This includes how the exams are structured and useful hints for passing the various sections of the tests.

If they decide to extend their course, do students need to pay another enrolment fee?

No, students only pay for their enrolment fee "once in a lifetime". They will not have to pay for another enrolment fee, whether they extend directly after their first course or years later!

Do students receive an official certificate at the end of their course?

At the end of their course, students receive a Langports certificate with their name, dates of studies, attendance percentage & participation grade and English level. If they decide to take an external examination, students will also get a certificate and official examination results from the examination.

Certificates are only delivered to students with an attendance of 80% or more. Please note that EAP certificates are only awarded to students whose attendance is 90% or higher.

What happens if a student books a course and a special is released after the booking?

It is Langports policy that students pay the price for their course at the current market price at the time of enrolment. Any specials offered by Langports at a later date only apply to bookings received during that special. Specials cannot be applied to previous bookings or be backdated.

If a student cancels & tries to re-enrol to receive a special, the date of their first enrolment will apply (even if students cancel and try to book through another agent).

What happens if a student decides to defer or postpone a course? (see policy page 107)

Students must start their course on their allocated start date, except in exceptional special circumstances. Students that wish to defer their start date and their course must give one week's written notice. If notice is less than one week Langports will charge one week's tuition fee. Students that do not arrive on the designated start date and do not give notice of deferral will automatically lose one week's tuition fees and their course will not be extended. If notice of deferral is not received within 48 hours after course commencement the course may be canceled.



Applying for a Student Visa (subclass 500) - Genuine Temporary Entrant Criterion

Please read this document for guidance on the GTE (Genuine Temporary Entrant) criteria required when applying for a Student Visa (subclass 500). This document is based on information published by the Australian Department of Immigration and Border Protection (DIBP).

To avoid unnecessary delays in the student visa process, students are advised to attach as many documents as possible to their student visa application and only submit their visa application when they can provide all information and evidence that is required.

What is the Genuine Temporary Entrant (GTE) Criterion?

To satisfy the Genuine Temporary Entrant criterion, you must demonstrate that you genuinely intend to stay in Australia temporarily to study.

The factors that are considered during assessment of the genuine temporary entrant requirement include: ☑ your personal circumstances in your home country; ☑ your potential circumstances in Australia; ☑ the value of the program to your future; ☑ your immigration history, and; ☑ any other matter that is relevant to your intention to remain in Australia temporarily.

If you are under 18 years of age, the intentions of your parent, legal guardian or spouse will also be considered. The information provided in your student visa application and supporting documentation will be used by the DIBP to assess the GTE requirement. You may be requested to provide extra information also.

For further information please refer to <https://www.border.gov.au/Trav/Stud/More/Genuine-TemporaryEntrant>

How should you address the Genuine Temporary Entrant Criterion?

DIBP needs to understand you and why you will study in Australia. In all Student Visa (subclass 500) applications, you are required to provide a written statement explaining your personal circumstances and intentions. To help with your statement, we are providing some suggestions for the information you should try to cover:

1. Your choice of English course
2. Your choice of education provider (Langports)
3. Your personal circumstances in your home country
4. Your choice to study in Australia
5. Your future studies and your future career plans
6. Your family back home and your connections in Australia

Please read on for detailed information on each category.

Your choice of English course

- How will this program benefit your future?
- What do you know about the course?
- What do you like about the course?
- Are you aware of the full cost of this program and why do you chose to spend this amount of money on studying English at Langports?

Your choice of education provider (Langports)

- What research have you done into Australian English schools that has led you to choose Langports?
- Why have you chosen Langports over other English schools in Australia?
- What do you know about Langports?

In these first 2 sections, immigration wants to understand the reasons why you want to study English, make sure you are enrolled in a program that will suit your needs, ensure that you are aware of the costs of education in Australia and finally make sure that you will be able to afford the costs of studying and living in Australia for the time you are enrolled.

Immigration needs to know that the studies you are planning to do in Australia are related to your previous studies and will really help you in your career back to your home country.

Your personal circumstances in your home country

- Do you have enough money to support yourself in Australia? ☑ Do you have any assets in your home country? (ie. House, savings or ownership of a company)
- How are you paying for your course? Is your company paying, parents, or have you saved the money?
- How much do you currently earn in your job? Do you expect this will increase when you return home?

In this section immigration wants to understand your personal & financial situation. They also want to see that there will be a financial benefit for you to return home after you complete your course in Australia.



Your choice to study in Australia

- How will studying in Australia benefit your future?
- Why have you particularly chosen to study in Brisbane, Gold Coast or Sydney?
- What research have you done into other countries that has led you to choose Australia as your study destination?
- You can also study English in your country, why don't you want to study there? How is the education system in Australia different to that in your country and how will this benefit you?

In this section immigration wants to understand the reasons why you decided to study English overseas, and more specifically the reasons why you chose Australia to do so. They also want to see that you can justify the cost of studying English in Australia as opposed to spending the same money in your country.

Your future studies and your future career plans

- Are you employed in your home country? Do you have a job waiting for you when you return from Australia? Or do you have an offer of a job when you return to your home country? If not, how do you intend to look for a job once you return home? What job do you expect to get once you complete this program? How this course will benefit you?
- Did you study in your home country? If so, what are you studying/did you study? And have you finished your studies or do you intend to go back to university after your English course in Australia? If you intend to go back, when will your next semester start? And do you have a proof that you are enrolled at university? Have you paid for the university fees already?
- If you had any gaps in your study or career (longer than 1 month), please explain why there was a gap?
- If you have changed careers or studies from one industry or subject to another, why? How will this affect your future career when you return to your country?

In this section immigration wants to make sure that you have employment/studies waiting for you back home. It is a way to check that you have plans in the future to go back to your home country after your studies in Australia and that you do not intend to migrate permanently. They also want to see that the investment that you are spending to study English in Australia will help you to improve your career.

Your family back home and your connections in Australia

- Are you married or single? If you are married, when did you marry? And does your spouse intend to accompany you to Australia? Or will they be waiting for you back home?
- What is your spouse's current occupation?
- If your spouse will accompany you, will your spouse resign from their current employment to accompany you to Australia? What does your spouse intend to do in Australia?
- What do your parents do?
- Do you have any children? If so, will your children accompany you to Australia? Are you aware that school aged children must attend school in Australia? Are you aware of the extra costs associated with bringing your spouse and/or children with you to Australia?
- Do you have family living in Australia? If so, what do they do and what type of visa do they hold in Australia?

In this section immigration wants to know which ties you have to your family back home and/or in Australia. Once again it is a way to check that you have plans in the future to go back to your home country after your studies in Australia and that you do not intend to migrate permanently.

If you come on a student visa, your sole focus should be your studies and you should be able to provide that you and your family have plans to go back to your country after and will have sufficient funds to cover your stay in Australia.



Applying for a Student Visa - Genuine Temporary Entrant Criterion

Your immigration and travel history

- If you have travelled to Australia previously, did you comply with your Australian visa conditions and left before the visa ceased?
- If you have come to Australia on a WHV or Tourist Visa, did you study and why do you want to now change to a Student Visa?
- Have you ever had any Australian visa application refused? What were the reasons/circumstances for refusal?
- Have you previously applied for a temporary or permanent visa in countries other than Australia?
- Have you ever had any visa application refused? What were the reasons/circumstances for refusal?

In this section immigration wants to make sure that you would be eligible for a visa in Australia, that you will comply with all your visa conditions and that you only intend to stay in the country temporarily. They also want to know your reasons for changing to a Student Visa if you have been on another type of Australian visa and that you are not just applying for a Student Visa to extend your stay and work.

IMPORTANT: Please note that if you will study in another institution AFTER Langports, please add information about this course & college too.

Supporting Evidence

To make your application stronger, you should attach as many supporting documents as possible and any evidence that helps demonstrate your purpose to study in Australia. Examples could include:

- Resume
- Letter from employer (if you will return to your job after you return to your country)
- Proof of enrolment in university or course in your country (if applicable)
- Proof of assets (copy of your bank accounts, house deed, company profile)

If DIBP needs this sort of evidence, it may save time with your application assessment if you can supply this upfront.

Please complete all sections of the online Student Visa Application form, and provide supporting documentation where required. Failure to do so could significantly delay your visa application process.

****This is a guideline only and Langports will not hold any responsibility for visa refusals.****

